

**CER1 Antibody (monoclonal) (M04)****Mouse monoclonal antibody raised against a full length recombinant CER1.****Catalog # AT1496a****Specification**

---

**CER1 Antibody (monoclonal) (M04) - Product Information**

Application	WB, IP
Primary Accession	<a href="#">O95813</a>
Other Accession	<a href="#">NM_005454</a>
Reactivity	Human
Host	mouse
Clonality	Monoclonal
Isotype	IgG2a Kappa
Calculated MW	30084

**CER1 Antibody (monoclonal) (M04) - Additional Information****Gene ID** 9350**Other Names**

Cerberus, Cerberus-related protein, DAN domain family member 4, CER1, DAND4

**Target/Specificity**

CER1 (NP\_005445.1, 158 a.a. ~ 266 a.a) full-length recombinant protein with GST tag. MW of the GST tag alone is 26 KDa.

**Dilution**

WB~~1:500~1000

IP~~N/A

**Format**

Clear, colorless solution in phosphate buffered saline, pH 7.2 .

**Storage**

Store at -20°C or lower. Aliquot to avoid repeated freezing and thawing.

**Precautions**

CER1 Antibody (monoclonal) (M04) is for research use only and not for use in diagnostic or therapeutic procedures.

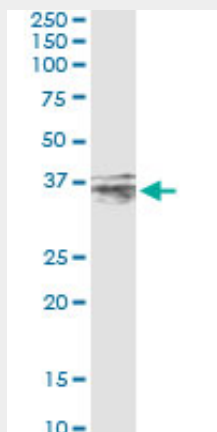
**CER1 Antibody (monoclonal) (M04) - Protocols**

Provided below are standard protocols that you may find useful for product applications.

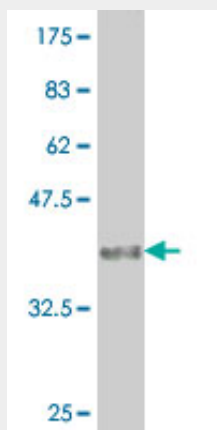
- [Western Blot](#)
- [Blocking Peptides](#)
- [Dot Blot](#)

- [Immunohistochemistry](#)
- [Immunofluorescence](#)
- [Immunoprecipitation](#)
- [Flow Cytometry](#)
- [Cell Culture](#)

#### **CER1 Antibody (monoclonal) (M04) - Images**



Immunoprecipitation of CER1 transfected lysate using anti-CER1 monoclonal antibody and Protein A Magnetic Bead ([U0007](#)), and immunoblotted with CER1 MaxPab rabbit polyclonal antibody.



Antibody Reactive Against Recombinant Protein. Western Blot detection against Immunogen (37.73 KDa) .

#### **CER1 Antibody (monoclonal) (M04) - Background**

This gene encodes a cytokine member of the cysteine knot superfamily, characterized by nine conserved cysteines and a cysteine knot region. The cerberus-related cytokines, together with Dan and DRM/Gremlin, represent a group of bone morphogenetic protein (BMP) antagonists that can bind directly to BMPs and inhibit their activity.

#### **CER1 Antibody (monoclonal) (M04) - References**

A gene-based risk score for lung cancer susceptibility in smokers and ex-smokers. Young RP, et al. Postgrad Med J, 2009 Oct. PMID 19789190. High-density association study of 383 candidate genes for volumetric BMD at the femoral neck and lumbar spine among older men. Yerges LM, et al. J Bone Miner Res, 2009 Dec. PMID 19453261. Lung cancer susceptibility model based on age, family history and genetic variants. Young RP, et al. PLoS One, 2009. PMID 19390575. Genome-wide

haplotype association mapping in mice identifies a genetic variant in CER1 associated with BMD and fracture in southern Chinese women. Tang PL, et al. J Bone Miner Res, 2009 Jun. PMID 19113921. Clinical and cytogenetic characterization of 13 Dutch patients with deletion 9p syndrome: Delineation of the critical region for a consensus phenotype. Swinkels ME, et al. Am J Med Genet A, 2008 Jun 1. PMID 18452192.