

**CFL1 Antibody (monoclonal) (M04)****Mouse monoclonal antibody raised against a full length recombinant CFL1.****Catalog # AT1506a****Specification**

---

**CFL1 Antibody (monoclonal) (M04) - Product Information**

Application	WB, IHC, IF
Primary Accession	<a href="#">P23528</a>
Other Accession	<a href="#">BC011005</a>
Reactivity	Human, Mouse
Host	mouse
Clonality	Monoclonal
Isotype	IgG2a Kappa
Calculated MW	18502

**CFL1 Antibody (monoclonal) (M04) - Additional Information****Gene ID** 1072**Other Names**

Cofilin-1, 18 kDa phosphoprotein, p18, Cofilin, non-muscle isoform, CFL1, CFL

**Target/Specificity**

CFL1 (AAH11005, 1 a.a. ~ 166 a.a) full-length recombinant protein with GST tag. MW of the GST tag alone is 26 KDa.

**Dilution**

WB~~1:500~1000

IHC~~1:100~500

IF~~1:50~200

**Format**

Clear, colorless solution in phosphate buffered saline, pH 7.2 .

**Storage**

Store at -20°C or lower. Aliquot to avoid repeated freezing and thawing.

**Precautions**

CFL1 Antibody (monoclonal) (M04) is for research use only and not for use in diagnostic or therapeutic procedures.

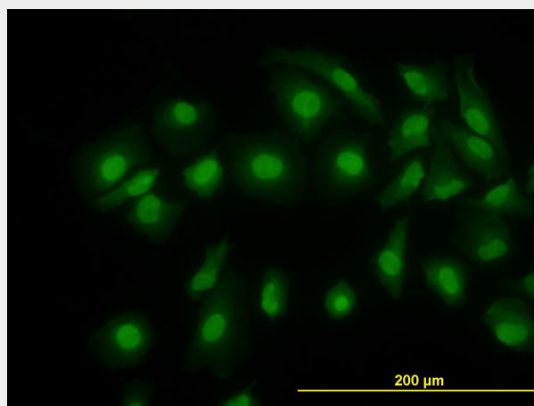
**CFL1 Antibody (monoclonal) (M04) - Protocols**

Provided below are standard protocols that you may find useful for product applications.

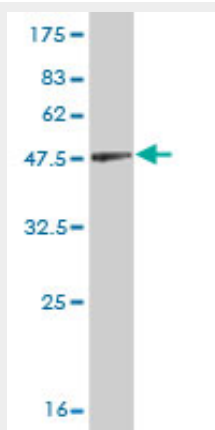
- [Western Blot](#)
- [Blocking Peptides](#)

- [Dot Blot](#)
- [Immunohistochemistry](#)
- [Immunofluorescence](#)
- [Immunoprecipitation](#)
- [Flow Cytometry](#)
- [Cell Culture](#)

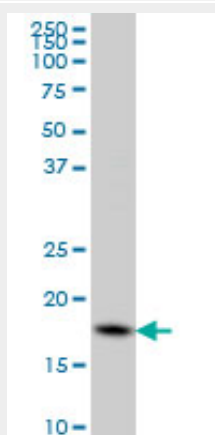
#### CFL1 Antibody (monoclonal) (M04) - Images



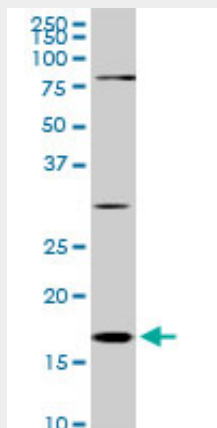
Immunofluorescence of monoclonal antibody to CFL1 on HeLa cell. [antibody concentration 10 ug/ml]



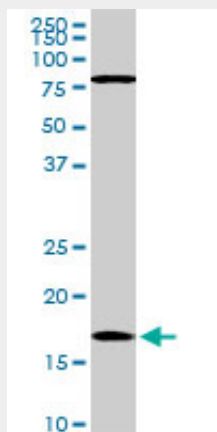
Antibody Reactive Against Recombinant Protein. Western Blot detection against Immunogen (44 KDa) .



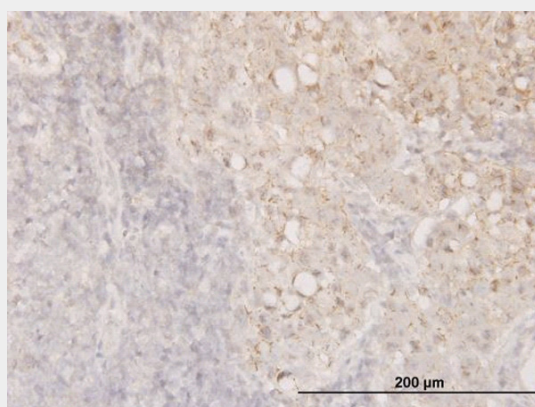
CFL1 monoclonal antibody (M04), clone 1A1 Western Blot analysis of CFL1 expression in HeLa (Cat # AT1506a )



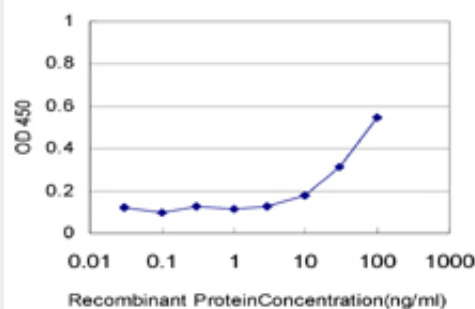
CFL1 monoclonal antibody (M04), clone 1A1. Western Blot analysis of CFL1 expression in Raw 264.7((Cat # AT1506a )



CFL1 monoclonal antibody (M04), clone 1A1. Western Blot analysis of CFL1 expression in NIH/3T3((Cat # AT1506a )



Immunoperoxidase of monoclonal antibody to CFL1 on formalin-fixed paraffin-embedded human breast cancer. [antibody concentration 1.5 ug/ml]



Detection limit for recombinant GST tagged CFL1 is approximately 10ng/ml as a capture antibody.

### **CFL1 Antibody (monoclonal) (M04) - Background**

Cofilin is a widely distributed intracellular actin-modulating protein that binds and depolymerizes filamentous F-actin and inhibits the polymerization of monomeric G-actin in a pH-dependent manner. It is involved in the translocation of actin-cofilin complex from cytoplasm to nucleus.

### **CFL1 Antibody (monoclonal) (M04) - References**

1.Determination of urine cofilin-1 level in acute kidney injury using a high-throughput localized surface plasmon-coupled fluorescence biosensor.Chang YF, Chao CH, Lin LY, Tsai CH, Chou C, Lee YJ Biomed Opt. 2014 Jan;19(1):11004. doi: 10.1117/1.JBO.19.1.011004.2.Identification of phosphorylated serine-15 and -82 residues of HSPB1 in 5-fluorouracil- resistant colorectal cancer cells by proteomics.Sakai A, Otani M, Miyamoto A, Yoshida H, Furuya E, Tanigawa N.Journal of Proteomics (2011), doi: 10.1016/j.jprot.2011.09.0233.Overexpression of cofilin 1 can predict progression-free survival in patients with epithelial ovarian cancer receiving standard therapy.Nishimura S, Tsuda H, Kataoka F, Arao T, Nomura H, Chiyoda T, Susumu N, Nishio K, Aoki D.Hum Pathol. 2011 Jan 13. [Epub ahead of print]