

**CHUK Antibody (monoclonal) (M04)****Mouse monoclonal antibody raised against a partial recombinant CHUK.****Catalog # AT1534a****Specification**

---

**CHUK Antibody (monoclonal) (M04) - Product Information**

Application	WB, IHC, IF
Primary Accession	<a href="#">O15111</a>
Other Accession	<a href="#">NM_001278</a>
Reactivity	Human
Host	mouse
Clonality	Monoclonal
Isotype	IgG1 Kappa
Calculated MW	84640

**CHUK Antibody (monoclonal) (M04) - Additional Information****Gene ID** 1147**Other Names**

Inhibitor of nuclear factor kappa-B kinase subunit alpha, I-kappa-B kinase alpha, IKK-A, IKK-alpha, Ikbka, IkappaB kinase, Conserved helix-loop-helix ubiquitous kinase, I-kappa-B kinase 1, IKK1, Nuclear factor NF-kappa-B inhibitor kinase alpha, NFKB1A, Transcription factor 16, TCF-16, CHUK, IKKA, TCF16

**Target/Specificity**

CHUK (NP\_001269, 646 a.a. ~ 745 a.a) partial recombinant protein with GST tag. MW of the GST tag alone is 26 KDa.

**Dilution**

WB~~1:500~1000

IHC~~1:100~500

IF~~1:50~200

**Format**

Clear, colorless solution in phosphate buffered saline, pH 7.2 .

**Storage**

Store at -20°C or lower. Aliquot to avoid repeated freezing and thawing.

**Precautions**

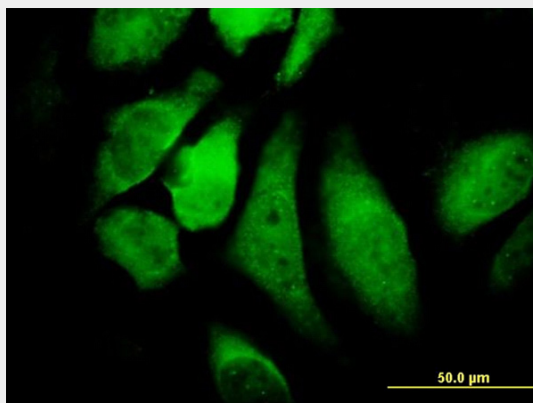
CHUK Antibody (monoclonal) (M04) is for research use only and not for use in diagnostic or therapeutic procedures.

**CHUK Antibody (monoclonal) (M04) - Protocols**

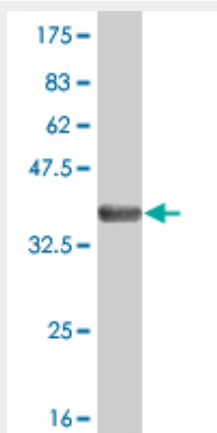
Provided below are standard protocols that you may find useful for product applications.

- [Western Blot](#)
- [Blocking Peptides](#)
- [Dot Blot](#)
- [Immunohistochemistry](#)
- [Immunofluorescence](#)
- [Immunoprecipitation](#)
- [Flow Cytometry](#)
- [Cell Culture](#)

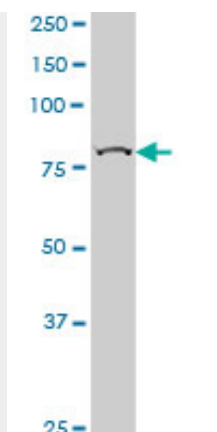
#### CHUK Antibody (monoclonal) (M04) - Images



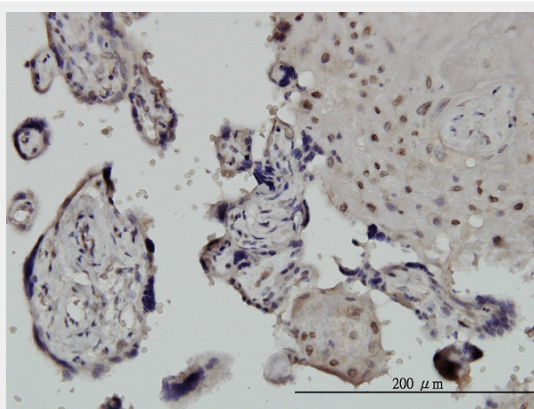
Immunofluorescence of monoclonal antibody to CHUK on HeLa cell. [antibody concentration 10 ug/ml]



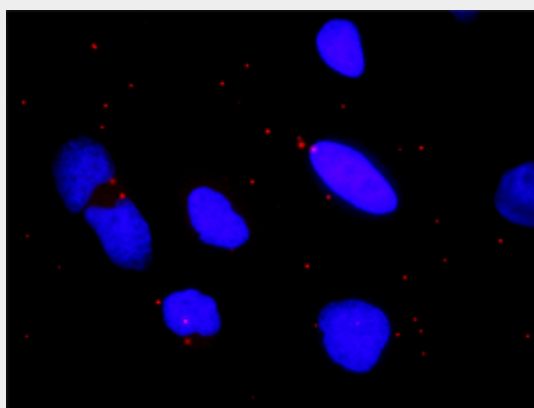
Antibody Reactive Against Recombinant Protein. Western Blot detection against Immunogen (36.63 KDa) .



CHUK monoclonal antibody (M04), clone 2G4 Western Blot analysis of CHUK expression in Jurkat (Cat # AT1534a)



Immunoperoxidase of monoclonal antibody to CHUK on formalin-fixed paraffin-embedded human placenta. [antibody concentration 3 ug/ml]



Proximity Ligation Analysis of protein-protein interactions between IKBKB and CHUK. HeLa cells were stained with anti-IBKKB rabbit purified polyclonal 1:1200 and anti-CHUK mouse monoclonal antibody 1:50. Each red dot represents the detection of protein-protein interaction complex, and nuclei were counterstained with DAPI (blue).

#### **CHUK Antibody (monoclonal) (M04) - Background**

This gene encodes a member of the serine/threonine protein kinase family. The encoded protein, a component of a cytokine-activated protein complex that is an inhibitor of the essential transcription factor NF-kappa-B complex, phosphorylates sites that trigger the degradation of the inhibitor via the ubiquitination pathway, thereby activating the transcription factor.

**CHUK Antibody (monoclonal) (M04) - References**

MicroRNAs modulate the noncanonical transcription factor NF-kappaB pathway by regulating expression of the kinase IKKalpha during macrophage differentiation. Li T, et al. Nat Immunol, 2010 Sep. PMID 20711193. The association of genetic variability in patatin-like phospholipase domain-containing protein 3 (PNPLA3) with histological severity of nonalcoholic fatty liver disease. Rotman Y, et al. Hepatology, 2010 Sep. PMID 20684021. Maternal genes and facial clefts in offspring: a comprehensive search for genetic associations in two population-based cleft studies from Scandinavia. Jugessur A, et al. PLoS One, 2010 Jul 9. PMID 20634891. Variation at the NFATC2 Locus Increases the Risk of Thiazolinedione-Induced Edema in the Diabetes REduction Assessment with ramipril and rosiglitazone Medication (DREAM) Study. Bailey SD, et al. Diabetes Care, 2010 Jul 13. PMID 20628086. Centrosome-related genes, genetic variation, and risk of breast cancer. Olson JE, et al. Breast Cancer Res Treat, 2010 May 28. PMID 20508983.