

CIB1 Antibody (monoclonal) (M01)**Mouse monoclonal antibody raised against a full length recombinant CIB1.****Catalog # AT1537a****Specification**

CIB1 Antibody (monoclonal) (M01) - Product Information

Application	WB, IHC, IF
Primary Accession	Q99828
Other Accession	BC000846
Reactivity	Human
Host	mouse
Clonality	Monoclonal
Isotype	IgG1 Kappa
Calculated MW	21703

CIB1 Antibody (monoclonal) (M01) - Additional Information**Gene ID** 10519**Other Names**

Calcium and integrin-binding protein 1, CIB, Calcium- and integrin-binding protein, CIBP, Calmyrin, DNA-PKcs-interacting protein, Kinase-interacting protein, KIP, SNK-interacting protein 2-28, SIP2-28, CIB1, CIB, KIP, PRKDCIP

Target/Specificity

CIB1 (AAH00846, 1 a.a. ~ 191 a.a) full-length recombinant protein with GST tag. MW of the GST tag alone is 26 KDa.

Dilution

WB~~1:500~1000

IHC~~1:100~500

IF~~1:50~200

Format

Clear, colorless solution in phosphate buffered saline, pH 7.2 .

Storage

Store at -20°C or lower. Aliquot to avoid repeated freezing and thawing.

Precautions

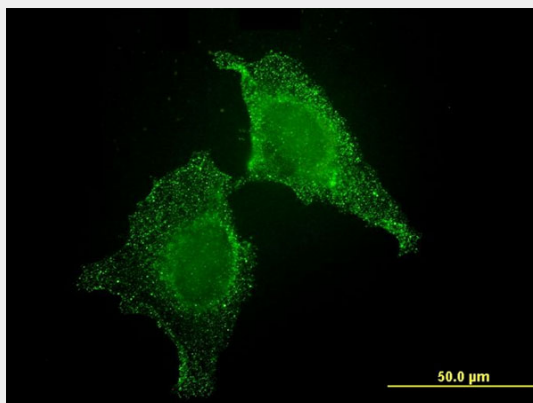
CIB1 Antibody (monoclonal) (M01) is for research use only and not for use in diagnostic or therapeutic procedures.

CIB1 Antibody (monoclonal) (M01) - Protocols

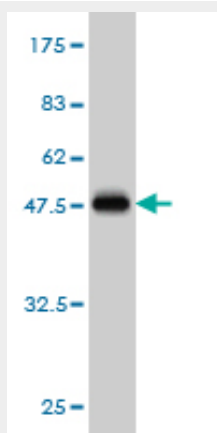
Provided below are standard protocols that you may find useful for product applications.

- [Western Blot](#)
- [Blocking Peptides](#)
- [Dot Blot](#)
- [Immunohistochemistry](#)
- [Immunofluorescence](#)
- [Immunoprecipitation](#)
- [Flow Cytometry](#)
- [Cell Culture](#)

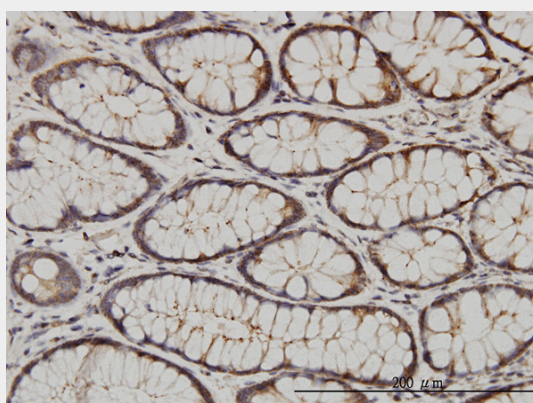
CIB1 Antibody (monoclonal) (M01) - Images



Immunofluorescence of monoclonal antibody to CIB1 on HeLa cell . [antibody concentration 10 ug/ml]



Antibody Reactive Against Recombinant Protein. Western Blot detection against Immunogen (46.75 KDa) .



Immunoperoxidase of monoclonal antibody to CIB1 on formalin-fixed paraffin-embedded human colon. [antibody concentration 3 ug/ml]

CIB1 Antibody (monoclonal) (M01) - Background

The protein encoded by this gene is a member of the calcium-binding protein family. The specific function of this protein has not yet been determined; however this protein is known to interact with DNA-dependent protein kinase and may play a role in kinase-phosphatase regulation of DNA end joining. This protein also interacts with integrin alpha(IIb)beta(3), which may implicate this protein as a regulatory molecule for alpha(IIb)beta(3).

CIB1 Antibody (monoclonal) (M01) - References

Variation at the NFATC2 Locus Increases the Risk of Thiazolinedinedione-Induced Edema in the Diabetes REduction Assessment with ramipril and rosiglitazone Medication (DREAM) Study. Bailey SD, et al. Diabetes Care, 2010 Jul 13. PMID 20628086. Gene-centric association signals for lipids and apolipoproteins identified via the HumanCVD BeadChip. Talmud PJ, et al. Am J Hum Genet, 2009 Nov. PMID 19913121. Translocation of sphingosine kinase 1 to the plasma membrane is mediated by calcium- and integrin-binding protein 1. Jarman KE, et al. J Biol Chem, 2010 Jan 1. PMID 19854831. Auxiliary Ca²⁺ binding sites can influence the structure of CIB1. Yamniuk AP, et al. Protein Sci, 2009 May. PMID 19388079. Characterization of calcium- and integrin-binding protein 1 (CIB1) knockout platelets: potential compensation by CIB family members. Denofrio JC, et al. Thromb Haemost, 2008 Nov. PMID 18989529.