

CKB Antibody (monoclonal) (M01)**Mouse monoclonal antibody raised against a full length recombinant CKB.****Catalog # AT1543a****Specification**

CKB Antibody (monoclonal) (M01) - Product Information

Application	WB, IF
Primary Accession	P12277
Other Accession	BC001190
Reactivity	Human
Host	mouse
Clonality	Monoclonal
Isotype	IgG1 Kappa
Calculated MW	42644

CKB Antibody (monoclonal) (M01) - Additional Information**Gene ID** 1152**Other Names**

Creatine kinase B-type, B-CK, Creatine kinase B chain, CKB, CKBB

Target/Specificity

CKB (AAH01190, 1 a.a. ~ 381 a.a) full-length recombinant protein with GST tag. MW of the GST tag alone is 26 KDa.

Dilution

WB~~1:500~1000

IF~~1:50~200

Format

Clear, colorless solution in phosphate buffered saline, pH 7.2 .

Storage

Store at -20°C or lower. Aliquot to avoid repeated freezing and thawing.

Precautions

CKB Antibody (monoclonal) (M01) is for research use only and not for use in diagnostic or therapeutic procedures.

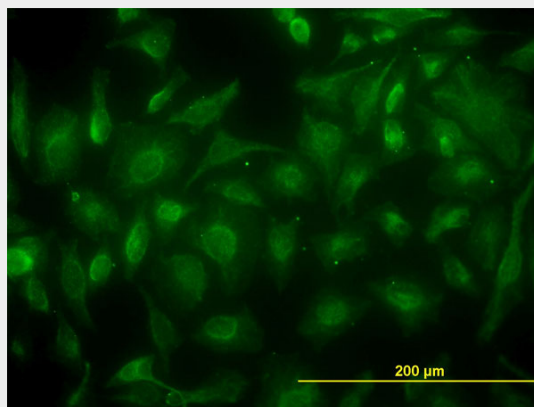
CKB Antibody (monoclonal) (M01) - Protocols

Provided below are standard protocols that you may find useful for product applications.

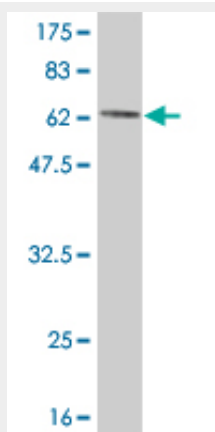
- [Western Blot](#)
- [Blocking Peptides](#)
- [Dot Blot](#)

- [Immunohistochemistry](#)
- [Immunofluorescence](#)
- [Immunoprecipitation](#)
- [Flow Cytometry](#)
- [Cell Culture](#)

CKB Antibody (monoclonal) (M01) - Images



Immunofluorescence of monoclonal antibody to CKB on HeLa cell. [antibody concentration 30 ug/ml]



Antibody Reactive Against Recombinant Protein. Western Blot detection against Immunogen (67.65 KDa) .

CKB Antibody (monoclonal) (M01) - Background

The protein encoded by this gene is a cytoplasmic enzyme involved in energy homeostasis. The encoded protein reversibly catalyzes the transfer of phosphate between ATP and various phosphogens such as creatine phosphate. It acts as a homodimer in brain as well as in other tissues, and as a heterodimer with a similar muscle isozyme in heart. The encoded protein is a member of the ATP:guanido phosphotransferase protein family. A pseudogene of this gene has been characterized.

CKB Antibody (monoclonal) (M01) - References

Reduced creatine kinase B activity in multiple sclerosis normal appearing white matter. Steen C, et al. PLoS One, 2010 May 25. PMID 20520825. Reduced creatine kinase as a central and peripheral biomarker in Huntington's disease. Kim J, et al. Biochim Biophys Acta, 2010 Jul-Aug. PMID 20460152. Defining the human deubiquitinating enzyme interaction landscape. Sowa ME, et al. Cell,

2009 Jul 23. PMID 19615732. Proteome analysis of schizophrenia patients Wernicke's area reveals an energy metabolism dysregulation. Martins-de-Souza D, et al. BMC Psychiatry, 2009 Apr 30. PMID 19405953. Prefrontal cortex shotgun proteome analysis reveals altered calcium homeostasis and immune system imbalance in schizophrenia. Martins-de-Souza D, et al. Eur Arch Psychiatry Clin Neurosci, 2009 Apr. PMID 19165527.