

CKLFSF4 Antibody (monoclonal) (M01)**Mouse monoclonal antibody raised against a partial recombinant CKLFSF4.****Catalog # AT1544a****Specification**

CKLFSF4 Antibody (monoclonal) (M01) - Product Information

Application	WB, E
Primary Accession	Q8IZR5
Other Accession	NM_178818
Reactivity	Human
Host	mouse
Clonality	Monoclonal
Isotype	IgG1 Kappa
Calculated MW	25828

CKLFSF4 Antibody (monoclonal) (M01) - Additional Information**Gene ID** 146223**Other Names**

CKLF-like MARVEL transmembrane domain-containing protein 4, Chemokine-like factor superfamily member 4, CMTM4, CKLFSF4

Target/Specificity

CKLFSF4 (NP_848933, 173 a.a. ~ 234 a.a) partial recombinant protein with GST tag. MW of the GST tag alone is 26 KDa.

Dilution

WB~~1:500~1000

E~~N/A

Format

Clear, colorless solution in phosphate buffered saline, pH 7.2 .

Storage

Store at -20°C or lower. Aliquot to avoid repeated freezing and thawing.

Precautions

CKLFSF4 Antibody (monoclonal) (M01) is for research use only and not for use in diagnostic or therapeutic procedures.

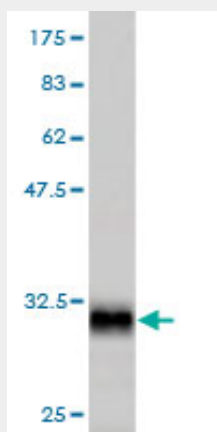
CKLFSF4 Antibody (monoclonal) (M01) - Protocols

Provided below are standard protocols that you may find useful for product applications.

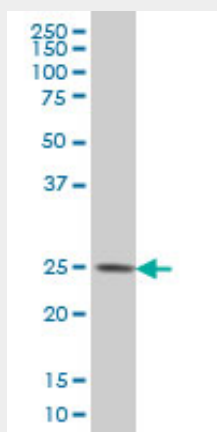
- [Western Blot](#)
- [Blocking Peptides](#)

- [Dot Blot](#)
- [Immunohistochemistry](#)
- [Immunofluorescence](#)
- [Immunoprecipitation](#)
- [Flow Cytometry](#)
- [Cell Culture](#)

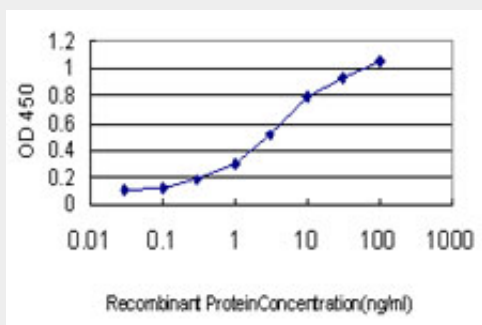
CKLFSF4 Antibody (monoclonal) (M01) - Images



Antibody Reactive Against Recombinant Protein. Western Blot detection against Immunogen (32.56 KDa) .



CKLFSF4 monoclonal antibody (M01), clone 6G4 Western Blot analysis of CMTM4 expression in HeLa ((Cat # AT1544a)



Detection limit for recombinant GST tagged CMTM4 is approximately 0.1ng/ml as a capture antibody.

CKLFSF4 Antibody (monoclonal) (M01) - Background

This gene belongs to the chemokine-like factor gene superfamily, a novel family that is similar to the chemokine and the transmembrane 4 superfamilies of signaling molecules. This gene is one of several chemokine-like factor genes located in a cluster on chromosome 16. Alternatively spliced transcript variants encoding different isoforms have been identified.

CKLFSF4 Antibody (monoclonal) (M01) - References

Identification and characterization of CMTM4, a novel gene with inhibitory effects on HeLa cell growth through Inducing G2/M phase accumulation. Plate M, et al. Mol Cells, 2010 Apr. PMID 20213316. Complete sequencing and characterization of 21,243 full-length human cDNAs. Ota T, et al. Nat Genet, 2004 Jan. PMID 14702039. Identification of eight genes encoding chemokine-like factor superfamily members 1-8 (CKLFSF1-8) by in silico cloning and experimental validation. Han W, et al. Genomics, 2003 Jun. PMID 12782130. Generation and initial analysis of more than 15,000 full-length human and mouse cDNA sequences. Strausberg RL, et al. Proc Natl Acad Sci U S A, 2002 Dec 24. PMID 12477932.