

**CKS1B Antibody (monoclonal) (M01)****Mouse monoclonal antibody raised against a partial recombinant CKS1B.****Catalog # AT1545a****Specification**

---

**CKS1B Antibody (monoclonal) (M01) - Product Information**

Application	WB, E
Primary Accession	<a href="#">P61024</a>
Other Accession	<a href="#">NM_001826</a>
Reactivity	Human
Host	mouse
Clonality	Monoclonal
Isotype	IgG1 kappa
Calculated MW	9660

**CKS1B Antibody (monoclonal) (M01) - Additional Information****Gene ID** 1163**Other Names**

Cyclin-dependent kinases regulatory subunit 1, CKS-1, CKS1B, CKS1

**Target/Specificity**

CKS1B (NP\_001817, 1 a.a. ~ 79 a.a) partial recombinant protein with GST tag. MW of the GST tag alone is 26 KDa.

**Dilution**

WB~~1:500~1000

E~~N/A

**Format**

Clear, colorless solution in phosphate buffered saline, pH 7.2 .

**Storage**

Store at -20°C or lower. Aliquot to avoid repeated freezing and thawing.

**Precautions**

CKS1B Antibody (monoclonal) (M01) is for research use only and not for use in diagnostic or therapeutic procedures.

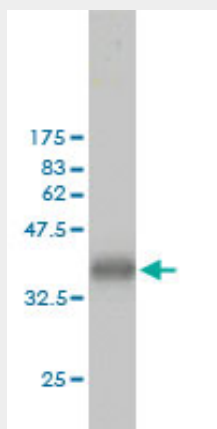
**CKS1B Antibody (monoclonal) (M01) - Protocols**

Provided below are standard protocols that you may find useful for product applications.

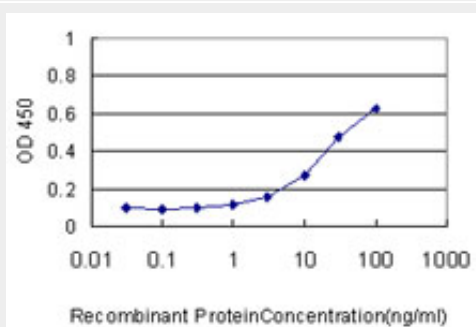
- [Western Blot](#)
- [Blocking Peptides](#)
- [Dot Blot](#)

- [Immunohistochemistry](#)
- [Immunofluorescence](#)
- [Immunoprecipitation](#)
- [Flow Cytometry](#)
- [Cell Culture](#)

### CKS1B Antibody (monoclonal) (M01) - Images



Antibody Reactive Against Recombinant Protein. Western Blot detection against Immunogen (34.43 KDa) .



Detection limit for recombinant GST tagged CKS1B is approximately 3ng/ml as a capture antibody.

### CKS1B Antibody (monoclonal) (M01) - Background

CKS1B protein binds to the catalytic subunit of the cyclin dependent kinases and is essential for their biological function. The CKS1B mRNA is found to be expressed in different patterns through the cell cycle in HeLa cells, which reflects a specialized role for the encoded protein. At least two transcript variants have been identified for this gene, and it appears that only one of them encodes a protein.

### CKS1B Antibody (monoclonal) (M01) - References

Personalized smoking cessation: interactions between nicotine dose, dependence and quit-success genotype score. Rose JE, et al. Mol Med, 2010 Jul-Aug. PMID 20379614. CKS1B overexpression implicates clinical aggressiveness of hepatocellular carcinomas but not p27(Kip1) protein turnover: an independent prognosticator with potential p27 (Kip1)-independent oncogenic attributes? Huang CW, et al. Ann Surg Oncol, 2010 Mar. PMID 19866239. Clinical significance and expression of cyclin kinase subunits 1 and 2 in hepatocellular carcinoma. Shen DY, et al. Liver Int, 2010 Jan. PMID 19845855. CKS proteins protect mitochondrial genome integrity by interacting with mitochondrial single-stranded DNA-binding protein. Radulovic M, et al. Mol Cell Proteomics, 2010 Jan. PMID

19786724. Defining the human deubiquitinating enzyme interaction landscape. Sowa ME, et al. Cell, 2009 Jul 23. PMID 19615732.