

CKS2 Antibody (monoclonal) (M01)

Mouse monoclonal antibody raised against a full length recombinant CKS2.

Catalog # AT1546a

Specification

CKS2 Antibody (monoclonal) (M01) - Product Information

Application	IF, WB, E
Primary Accession	P33552
Other Accession	BC006458
Reactivity	Human
Host	mouse
Clonality	Monoclonal
Isotype	IgG2b kappa
Calculated MW	9860

CKS2 Antibody (monoclonal) (M01) - Additional Information

Gene ID 1164

Other Names

Cyclin-dependent kinases regulatory subunit 2, CKS-2, CKS2

Target/Specificity

CKS2 (AAH06458, 1 a.a. ~ 79 a.a) full-length recombinant protein with GST tag. MW of the GST tag alone is 26 KDa.

Dilution

WB~~1:500~1000

Format

Clear, colorless solution in phosphate buffered saline, pH 7.2 .

Storage

Store at -20°C or lower. Aliquot to avoid repeated freezing and thawing.

Precautions

CKS2 Antibody (monoclonal) (M01) is for research use only and not for use in diagnostic or therapeutic procedures.

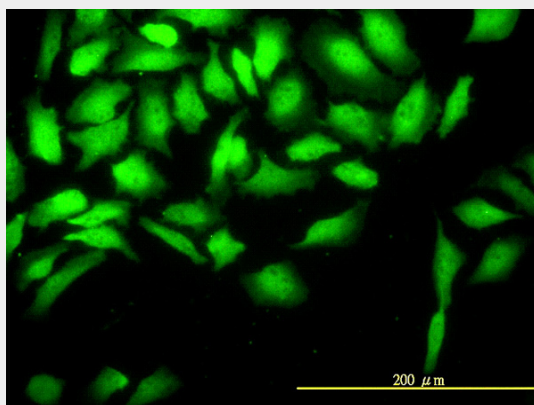
CKS2 Antibody (monoclonal) (M01) - Protocols

Provided below are standard protocols that you may find useful for product applications.

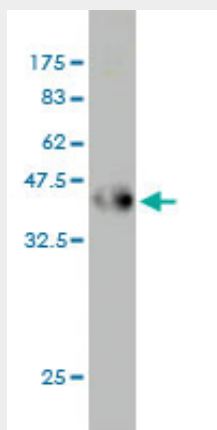
- [Western Blot](#)
- [Blocking Peptides](#)
- [Dot Blot](#)
- [Immunohistochemistry](#)

- [Immunofluorescence](#)
- [Immunoprecipitation](#)
- [Flow Cytometry](#)
- [Cell Culture](#)

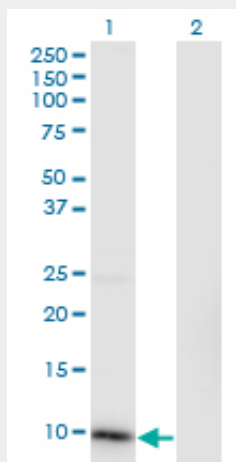
CKS2 Antibody (monoclonal) (M01) - Images



Immunofluorescence of monoclonal antibody to CKS2 on HeLa cell. [antibody concentration 10 ug/ml]



Antibody Reactive Against Recombinant Protein. Western Blot detection against Immunogen (34.43 KDa) .

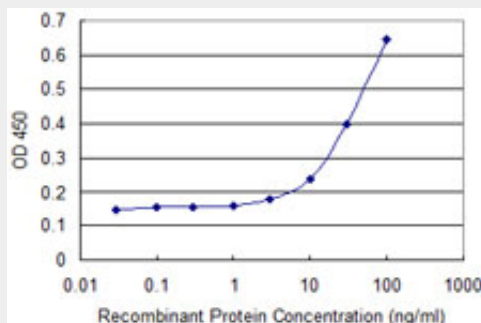


Western Blot analysis of CKS2 expression in transfected 293T cell line by CKS2 monoclonal

antibody (M01), clone 2H5-2C4.

Lane 1: CKS2 transfected lysate(9.9 KDa).

Lane 2: Non-transfected lysate.



Detection limit for recombinant GST tagged CKS2 is approximately 3ng/ml as a capture antibody.

CKS2 Antibody (monoclonal) (M01) - Background

CKS2 protein binds to the catalytic subunit of the cyclin dependent kinases and is essential for their biological function. The CKS2 mRNA is found to be expressed in different patterns through the cell cycle in HeLa cells, which reflects specialized role for the encoded protein.

CKS2 Antibody (monoclonal) (M01) - References

Clinical significance and expression of cyclin kinase subunits 1 and 2 in hepatocellular carcinoma. Shen DY, et al. Liver Int, 2010 Jan. PMID 19845855. Upregulation of the cyclin kinase subunit CKS2 increases cell proliferation rate in gastric cancer. Kang MA, et al. J Cancer Res Clin Oncol, 2009 Jun. PMID 19034516. Cyclin-dependent kinase-associated proteins Cks1 and Cks2 are essential during early embryogenesis and for cell cycle progression in somatic cells. Martinsson-Ahlzén HS, et al. Mol Cell Biol, 2008 Sep. PMID 18625720. Aberrant expression of Cks1 and Cks2 contributes to prostate tumorigenesis by promoting proliferation and inhibiting programmed cell death. Lan Y, et al. Int J Cancer, 2008 Aug 1. PMID 18498131. Exquisite sensitivity of TP53 mutant and basal breast cancers to a dose-dense epirubicin-cyclophosphamide regimen. Bertheau P, et al. PLoS Med, 2007 Mar. PMID 17388661.