

**CLCA1 Antibody (monoclonal) (M03)****Mouse monoclonal antibody raised against a partial recombinant CLCA1.****Catalog # AT1548a****Specification**

---

**CLCA1 Antibody (monoclonal) (M03) - Product Information**

Application	WB, E
Primary Accession	<a href="#">A8K7I4</a>
Other Accession	<a href="#">NM_001285</a>
Reactivity	Human
Host	mouse
Clonality	Monoclonal
Isotype	IgG1 Kappa
Calculated MW	100226

**CLCA1 Antibody (monoclonal) (M03) - Additional Information****Gene ID** 1179**Other Names**

Calcium-activated chloride channel regulator 1, 34--, Calcium-activated chloride channel family member 1, hCLCA1, Calcium-activated chloride channel protein 1, CaCC-1, hCaCC-1, CLCA1, CACC1

**Target/Specificity**

CLCA1 (NP\_001276, 677 a.a. ~ 776 a.a) partial recombinant protein with GST tag. MW of the GST tag alone is 26 KDa.

**Dilution**

WB~~1:500~1000

E~~N/A

**Format**

Clear, colorless solution in phosphate buffered saline, pH 7.2 .

**Storage**

Store at -20°C or lower. Aliquot to avoid repeated freezing and thawing.

**Precautions**

CLCA1 Antibody (monoclonal) (M03) is for research use only and not for use in diagnostic or therapeutic procedures.

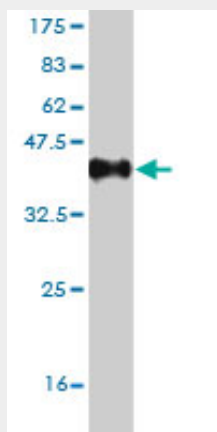
**CLCA1 Antibody (monoclonal) (M03) - Protocols**

Provided below are standard protocols that you may find useful for product applications.

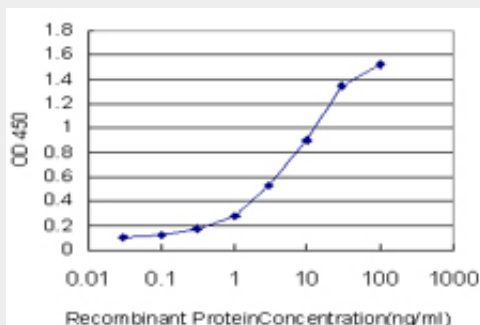
- [Western Blot](#)

- [Blocking Peptides](#)
- [Dot Blot](#)
- [Immunohistochemistry](#)
- [Immunofluorescence](#)
- [Immunoprecipitation](#)
- [Flow Cytometry](#)
- [Cell Culture](#)

### CLCA1 Antibody (monoclonal) (M03) - Images



Antibody Reactive Against Recombinant Protein. Western Blot detection against Immunogen (36.74 KDa) .



Detection limit for recombinant GST tagged CLCA1 is approximately 0.1ng/ml as a capture antibody.

### CLCA1 Antibody (monoclonal) (M03) - Background

This gene encodes a member of the calcium sensitive chloride conductance protein family. To date, all members of this gene family map to the same region on chromosome 1p31-p22 and share a high degree of homology in size, sequence, and predicted structure, but differ significantly in their tissue distributions. The encoded protein is expressed as a precursor protein that is processed into two cell-surface-associated subunits, although the site at which the precursor is cleaved has not been precisely determined. The encoded protein may be involved in mediating calcium-activated chloride conductance in the intestine.

### CLCA1 Antibody (monoclonal) (M03) - References

Variation at the NFATC2 Locus Increases the Risk of Thiazolidinedione-Induced Edema in the Diabetes REduction Assessment with ramipril and rosiglitazone Medication (DREAM) Study. Bailey SD, et al. Diabetes Care, 2010 Jul 13. PMID 20628086. Polymorphisms in innate immunity genes and risk of childhood leukemia. Han S, et al. Hum Immunol, 2010 Jul. PMID 20438785. Risk of

meningioma and common variation in genes related to innate immunity. Rajaraman P, et al. Cancer Epidemiol Biomarkers Prev, 2010 May. PMID 20406964. Association of the CLCA1 p.S357N variant with meconium ileus in European patients with cystic fibrosis. van der Doef HP, et al. J Pediatr Gastroenterol Nutr, 2010 Mar. PMID 20179644. Gene-centric association signals for lipids and apolipoproteins identified via the HumanCVD BeadChip. Talmud PJ, et al. Am J Hum Genet, 2009 Nov. PMID 19913121.