

**COL4A6 Antibody (monoclonal) (M01)**

Mouse monoclonal antibody raised against a full length recombinant COL4A6.

Catalog # AT1583a

**Specification**

---

**COL4A6 Antibody (monoclonal) (M01) - Product Information**

Application	E
Primary Accession	<a href="#">Q14031</a>
Other Accession	<a href="#">BC005305</a>
Reactivity	Human
Host	mouse
Clonality	Monoclonal
Isotype	IgG2a Kappa
Calculated MW	163807

**COL4A6 Antibody (monoclonal) (M01) - Additional Information**

**Gene ID** 1288

**Other Names**

Collagen alpha-6(IV) chain, COL4A6

**Target/Specificity**

COL4A6 (AAH05305, 1 a.a. ~ 73 a.a) full-length recombinant protein with GST tag. MW of the GST tag alone is 26 KDa.

**Dilution**

E~~N/A

**Format**

Clear, colorless solution in phosphate buffered saline, pH 7.2 .

**Storage**

Store at -20°C or lower. Aliquot to avoid repeated freezing and thawing.

**Precautions**

COL4A6 Antibody (monoclonal) (M01) is for research use only and not for use in diagnostic or therapeutic procedures.

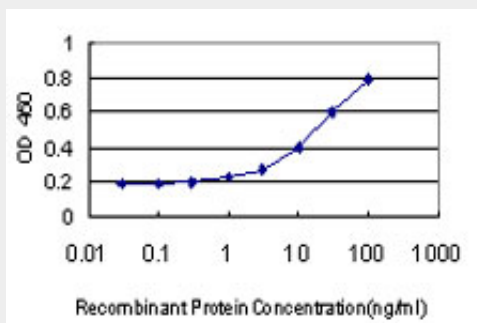
**COL4A6 Antibody (monoclonal) (M01) - Protocols**

Provided below are standard protocols that you may find useful for product applications.

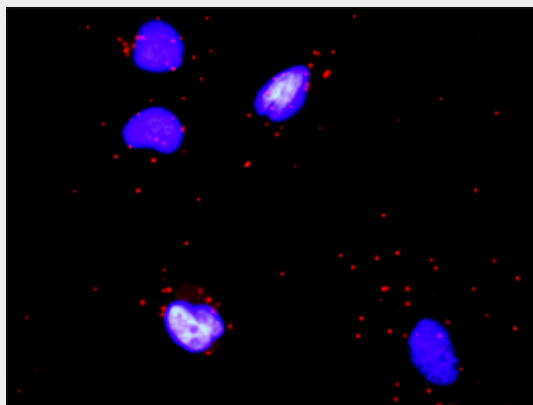
- [Western Blot](#)
- [Blocking Peptides](#)
- [Dot Blot](#)
- [Immunohistochemistry](#)

- [Immunofluorescence](#)
- [Immunoprecipitation](#)
- [Flow Cytometry](#)
- [Cell Culture](#)

#### **COL4A6 Antibody (monoclonal) (M01) - Images**



Detection limit for recombinant GST tagged COL4A6 is approximately 1ng/ml as a capture antibody.



Proximity Ligation Analysis of protein-protein interactions between OSM and COL4A6. HeLa cells were stained with anti-OSM rabbit purified polyclonal 1:1200 and anti-COL4A6 mouse monoclonal antibody 1:50. Each red dot represents the detection of protein-protein interaction complex, and nuclei were counterstained with DAPI (blue).

#### **COL4A6 Antibody (monoclonal) (M01) - Background**

This gene encodes one of the six subunits of type IV collagen, the major structural component of basement membranes. Like the other members of the type IV collagen gene family, this gene is organized in a head-to-head conformation with another type IV collagen gene, alpha 5 type IV collagen, so that the gene pair shares a common promoter. Deletions in the alpha 5 gene that extend into the alpha 6 gene result in diffuse leiomyomatosis accompanying the X-linked Alport syndrome caused by the deletion in the alpha 5 gene. Two splice variants have been identified for this gene.

#### **COL4A6 Antibody (monoclonal) (M01) - References**

A genetic association study of maternal and fetal candidate genes that predispose to preterm prelabor rupture of membranes (PROM). Romero R, et al. Am J Obstet Gynecol, 2010 Jul 29. PMID 20673868. Variation at the NFATC2 Locus Increases the Risk of Thiazolidinedione-Induced Edema in the Diabetes REduction Assessment with ramipril and rosiglitazone Medication (DREAM) Study. Bailey SD, et al. Diabetes Care, 2010 Jul 13. PMID 20628086. Identification of fetal and maternal

single nucleotide polymorphisms in candidate genes that predispose to spontaneous preterm labor with intact membranes. Romero R, et al. Am J Obstet Gynecol, 2010 May. PMID 20452482. Gene-centric association signals for lipids and apolipoproteins identified via the HumanCVD BeadChip. Talmud PJ, et al. Am J Hum Genet, 2009 Nov. PMID 19913121. Collagen mRNA levels changes during colorectal cancer carcinogenesis. Skovbjerg H, et al. BMC Cancer, 2009 May 7. PMID 19422682.