

COPS3 Antibody (monoclonal) (M02)**Mouse monoclonal antibody raised against a partial recombinant COPS3.****Catalog # AT1592a****Specification**

COPS3 Antibody (monoclonal) (M02) - Product Information

Application	WB, IF, E
Primary Accession	O9UNS2
Other Accession	NM_003653
Reactivity	Human, Rat
Host	mouse
Clonality	Monoclonal
Isotype	IgG2a Kappa
Calculated MW	47873

COPS3 Antibody (monoclonal) (M02) - Additional Information**Gene ID** 8533**Other Names**

COP9 signalosome complex subunit 3, SGN3, Signalosome subunit 3, JAB1-containing signalosome subunit 3, COPS3, CSN3

Target/Specificity

COPS3 (NP_003644, 324 a.a. ~ 422 a.a) partial recombinant protein with GST tag. MW of the GST tag alone is 26 KDa.

Dilution

WB~~1:500~1000

IF~~1:50~200

E~~N/A

Format

Clear, colorless solution in phosphate buffered saline, pH 7.2 .

Storage

Store at -20°C or lower. Aliquot to avoid repeated freezing and thawing.

Precautions

COPS3 Antibody (monoclonal) (M02) is for research use only and not for use in diagnostic or therapeutic procedures.

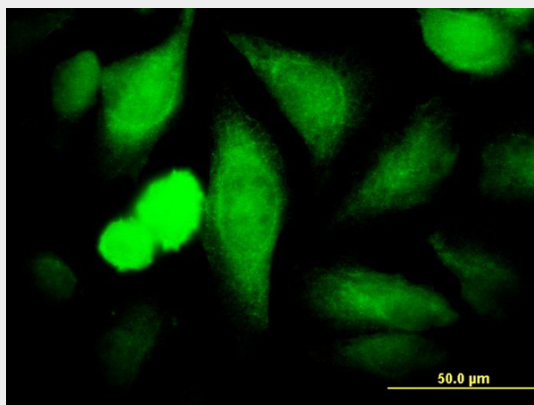
COPS3 Antibody (monoclonal) (M02) - Protocols

Provided below are standard protocols that you may find useful for product applications.

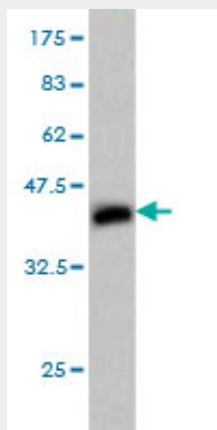
- [Western Blot](#)

- [Blocking Peptides](#)
- [Dot Blot](#)
- [Immunohistochemistry](#)
- [Immunofluorescence](#)
- [Immunoprecipitation](#)
- [Flow Cytometry](#)
- [Cell Culture](#)

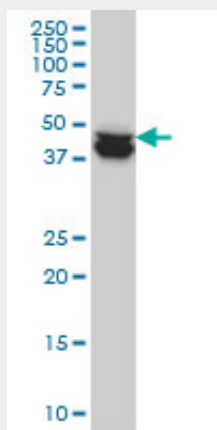
COPS3 Antibody (monoclonal) (M02) - Images



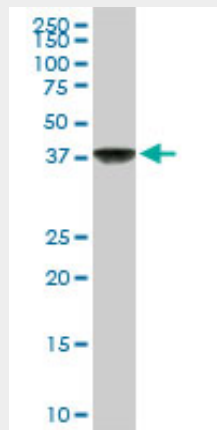
Immunofluorescence of monoclonal antibody to COPS3 on HeLa cell. [antibody concentration 20 ug/ml]



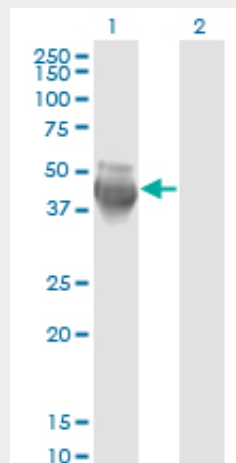
Antibody Reactive Against Recombinant Protein. Western Blot detection against Immunogen (36.63 KDa) .



COPS3 monoclonal antibody (M02), clone 2D10 Western Blot analysis of COPS3 expression in HeLa ((Cat # AT1592a)



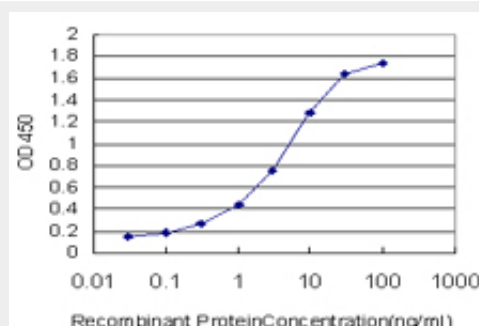
COPS3 monoclonal antibody (M02), clone 2D10. Western Blot analysis of COPS3 expression in PC-12 ((Cat # AT1592a)



Western Blot analysis of COPS3 expression in transfected 293T cell line by COPS3 monoclonal antibody (M02), clone 2D10.

Lane 1: COPS3 transfected lysate(47.9 KDa).

Lane 2: Non-transfected lysate.



Detection limit for recombinant GST tagged COPS3 is approximately 0.1ng/ml as a capture antibody.

COPS3 Antibody (monoclonal) (M02) - Background

The protein encoded by this gene possesses kinase activity that phosphorylates regulators involved in signal transduction. It phosphorylates I kappa-Balpha, p105, and c-Jun. It acts as a docking site for complex-mediated phosphorylation. The gene is located within the Smith-Magenis syndrome region on chromosome 17.

COPS3 Antibody (monoclonal) (M02) - References

Defining the human deubiquitinating enzyme interaction landscape. Sowa ME, et al. Cell, 2009 Jul 23. PMID 19615732. The ubiquitin- and proteasome-dependent degradation of COX-2 is regulated by the COP9 signalosome and differentially influenced by coxibs. Neuss H, et al. J Mol Med, 2007 Sep. PMID 17429597. Large-scale mapping of human protein-protein interactions by mass spectrometry. Ewing RM, et al. Mol Syst Biol, 2007. PMID 17353931. Molecular architecture and assembly of the DDB1-CUL4A ubiquitin ligase machinery. Angers S, et al. Nature, 2006 Oct 5. PMID 16964240. A family of diverse Cul4-Ddb1-interacting proteins includes Cdt2, which is required for S phase destruction of the replication factor Cdt1. Jin J, et al. Mol Cell, 2006 Sep 1. PMID 16949367.