

CPA2 Antibody (monoclonal) (M02)**Mouse monoclonal antibody raised against a partial recombinant CPA2.****Catalog # AT1604a****Specification**

CPA2 Antibody (monoclonal) (M02) - Product Information

Application	WB, IP, E
Primary Accession	P48052
Other Accession	NM_001869
Reactivity	Human
Host	mouse
Clonality	Monoclonal
Isotype	IgG2b Kappa
Calculated MW	47030

CPA2 Antibody (monoclonal) (M02) - Additional Information**Gene ID** 1358**Other Names**

Carboxypeptidase A2, CPA2

Target/Specificity

CPA2 (NP_001860, 117 a.a. ~ 206 a.a) partial recombinant protein with GST tag. MW of the GST tag alone is 26 KDa.

Dilution

WB~~1:500~1000

IP~~N/A

E~~N/A

Format

Clear, colorless solution in phosphate buffered saline, pH 7.2 .

Storage

Store at -20°C or lower. Aliquot to avoid repeated freezing and thawing.

Precautions

CPA2 Antibody (monoclonal) (M02) is for research use only and not for use in diagnostic or therapeutic procedures.

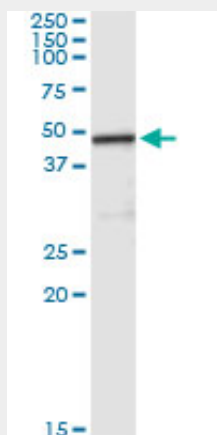
CPA2 Antibody (monoclonal) (M02) - Protocols

Provided below are standard protocols that you may find useful for product applications.

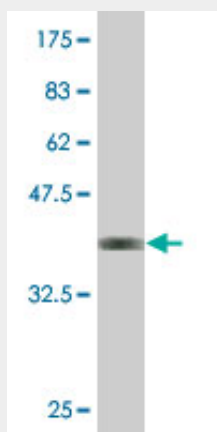
- [Western Blot](#)
- [Blocking Peptides](#)

- [Dot Blot](#)
- [Immunohistochemistry](#)
- [Immunofluorescence](#)
- [Immunoprecipitation](#)
- [Flow Cytometry](#)
- [Cell Culture](#)

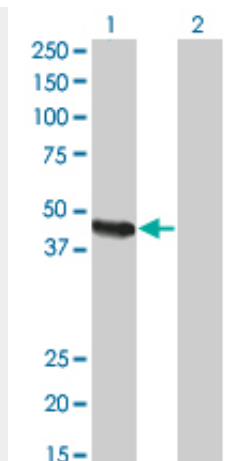
CPA2 Antibody (monoclonal) (M02) - Images



Immunoprecipitation of CPA2 transfected lysate using anti-CPA2 monoclonal antibody and Protein A Magnetic Bead ([U0007](#)), and immunoblotted with CPA2 MaxPab rabbit polyclonal antibody.



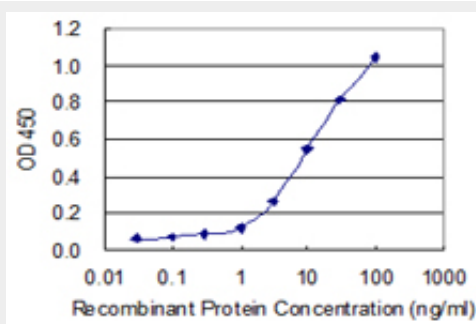
Antibody Reactive Against Recombinant Protein. Western Blot detection against Immunogen (35.9 kDa) .



Western Blot analysis of CPA2 expression in transfected 293T cell line by CPA2 monoclonal antibody (M02), clone 2E11.

Lane 1: CPA2 transfected lysate(46.8 KDa).

Lane 2: Non-transfected lysate.



Detection limit for recombinant GST tagged CPA2 is 0.3 ng/ml as a capture antibody.

CPA2 Antibody (monoclonal) (M02) - Background

Three different forms of human pancreatic procarboxypeptidase A have been isolated. The encoded protein represents the A2 form, which is a monomeric protein with different biochemical properties from the A1 and A3 forms. The A2 form of pancreatic procarboxypeptidase acts on aromatic C-terminal residues and is a secreted protein.

CPA2 Antibody (monoclonal) (M02) - References

Personalized smoking cessation: interactions between nicotine dose, dependence and quit-success genotype score. Rose JE, et al. Mol Med, 2010 Jul-Aug. PMID 20379614. Influence of aggregation propensity and stability on amyloid fibril formation as studied by Fourier transform infrared spectroscopy and two-dimensional COS analysis. Cerdá-Costa N, et al. Biochemistry, 2009 Nov 10. PMID 19817500. High-density SNP association study and copy number variation analysis of the AUTS1 and AUTS5 loci implicate the IMMP2L-DOCK4 gene region in autism susceptibility. Maestrini E, et al. Mol Psychiatry, 2010 Sep. PMID 19401682. High-resolution structural and thermodynamic analysis of extreme stabilization of human procarboxypeptidase by computational protein design. Dantas G, et al. J Mol Biol, 2007 Mar 2. PMID 17196978. The status, quality, and expansion of the NIH full-length cDNA project: the Mammalian Gene Collection (MGC). Gerhard DS, et al. Genome Res, 2004 Oct. PMID 15489334.