

**CPB1 Antibody (monoclonal) (M01)****Mouse monoclonal antibody raised against a full length recombinant CPB1.****Catalog # AT1605a****Specification**

---

**CPB1 Antibody (monoclonal) (M01) - Product Information**

Application	WB, IHC, IP
Primary Accession	<a href="#">P15086</a>
Other Accession	<a href="#">BC015338</a>
Reactivity	Human
Host	mouse
Clonality	Monoclonal
Isotype	IgG2a Kappa
Calculated MW	47368

**CPB1 Antibody (monoclonal) (M01) - Additional Information****Gene ID** 1360**Other Names**

Carboxypeptidase B, Pancreas-specific protein, PASP, CPB1, CPB, PCPB

**Target/Specificity**

CPB1 (AAH15338, 14 a.a. ~ 417 a.a) full-length recombinant protein with GST tag. MW of the GST tag alone is 26 KDa.

**Dilution**

WB~~1:500~1000

IHC~~1:100~500

IP~~N/A

**Format**

Clear, colorless solution in phosphate buffered saline, pH 7.2 .

**Storage**

Store at -20°C or lower. Aliquot to avoid repeated freezing and thawing.

**Precautions**

CPB1 Antibody (monoclonal) (M01) is for research use only and not for use in diagnostic or therapeutic procedures.

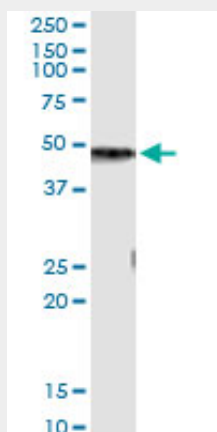
**CPB1 Antibody (monoclonal) (M01) - Protocols**

Provided below are standard protocols that you may find useful for product applications.

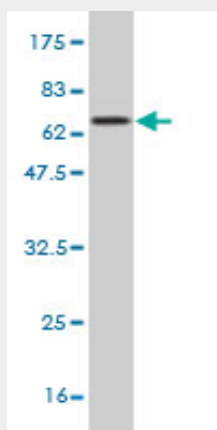
- [Western Blot](#)
- [Blocking Peptides](#)

- [Dot Blot](#)
- [Immunohistochemistry](#)
- [Immunofluorescence](#)
- [Immunoprecipitation](#)
- [Flow Cytometry](#)
- [Cell Culture](#)

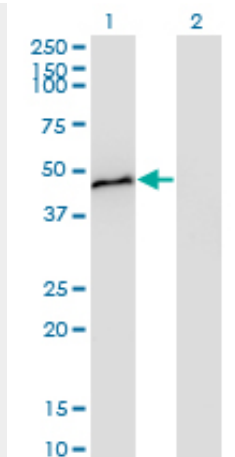
#### CPB1 Antibody (monoclonal) (M01) - Images



Immunoprecipitation of CPB1 transfected lysate using anti-CPB1 monoclonal antibody and Protein A Magnetic Bead ([U0007](#)), and immunoblotted with CPB1 MaxPab rabbit polyclonal antibody.



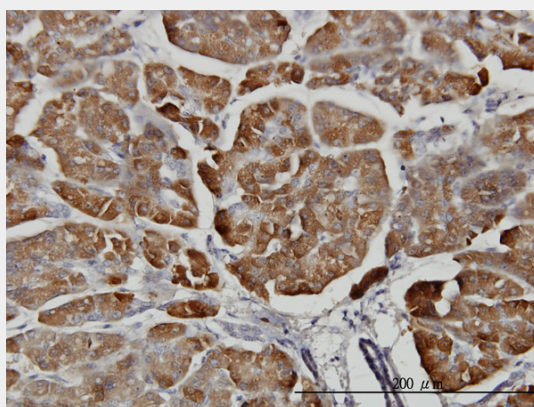
Antibody Reactive Against Recombinant Protein. Western Blot detection against Immunogen (70.18 KDa) .



Western Blot analysis of CPB1 expression in transfected 293T cell line by CPB1 monoclonal antibody (M01), clone 4D5.

Lane 1: CPB1 transfected lysate(47.4 KDa).

Lane 2: Non-transfected lysate.



Immunoperoxidase of monoclonal antibody to CPB1 on formalin-fixed paraffin-embedded human pancreas. [antibody concentration 3 ug/ml]

### **CPB1 Antibody (monoclonal) (M01) - Background**

Three different procarboxypeptidases A and two different procarboxypeptidases B have been isolated. The B1 and B2 forms differ from each other mainly in isoelectric point. Carboxypeptidase B1 is a highly tissue-specific protein and is a useful serum marker for acute pancreatitis and dysfunction of pancreatic transplants. It is not elevated in pancreatic carcinoma.

### **CPB1 Antibody (monoclonal) (M01) - References**

Personalized smoking cessation: interactions between nicotine dose, dependence and quit-success genotype score. Rose JE, et al. Mol Med, 2010 Jul-Aug. PMID 20379614. The NMR structure and dynamics of the two-domain tick carboxypeptidase inhibitor reveal flexibility in its free form and stiffness upon binding to human carboxypeptidase B. Pantoja-Uceda D, et al. Biochemistry, 2008 Jul 8. PMID 18558717. TAFI and pancreatic carboxypeptidase B modulate in vitro capillary tube formation by human microvascular endothelial cells. Guimar?es AH, et al. Arterioscler Thromb Vasc Biol, 2007 Oct. PMID 17673703. The status, quality, and expansion of the NIH full-length cDNA project: the Mammalian Gene Collection (MGC). Gerhard DS, et al. Genome Res, 2004 Oct. PMID 15489334. Generation and initial analysis of more than 15,000 full-length human and mouse cDNA sequences. Strausberg RL, et al. Proc Natl Acad Sci U S A, 2002 Dec 24. PMID 12477932.