

CPVL Antibody (monoclonal) (M01)**Mouse monoclonal antibody raised against a full length recombinant CPVL.****Catalog # AT1615a****Specification**

CPVL Antibody (monoclonal) (M01) - Product Information

Application	WB, IHC, IF
Primary Accession	Q9H3G5
Other Accession	BC016838
Reactivity	Human
Host	mouse
Clonality	Monoclonal
Isotype	IgG1 kappa
Calculated MW	54164

CPVL Antibody (monoclonal) (M01) - Additional Information**Gene ID** 54504**Other Names**

Probable serine carboxypeptidase CPVL, 3416-, Carboxypeptidase, vitellogenic-like, Vitellogenic carboxypeptidase-like protein, VCP-like protein, hVLP, CPVL, VLP

Target/Specificity

CPVL (AAH16838.1, 1 a.a. ~ 476 a.a) full-length recombinant protein with GST tag. MW of the GST tag alone is 26 KDa.

Dilution

WB~~1:500~1000

IHC~~1:100~500

IF~~1:50~200

Format

Clear, colorless solution in phosphate buffered saline, pH 7.2 .

Storage

Store at -20°C or lower. Aliquot to avoid repeated freezing and thawing.

Precautions

CPVL Antibody (monoclonal) (M01) is for research use only and not for use in diagnostic or therapeutic procedures.

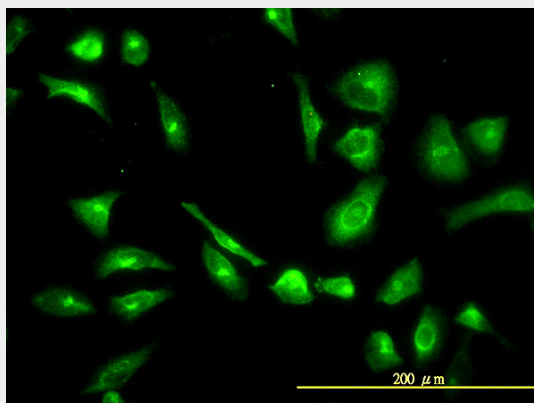
CPVL Antibody (monoclonal) (M01) - Protocols

Provided below are standard protocols that you may find useful for product applications.

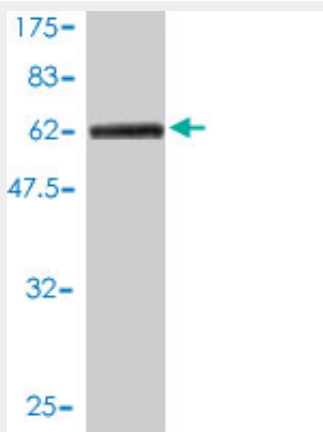
- [Western Blot](#)

- [Blocking Peptides](#)
- [Dot Blot](#)
- [Immunohistochemistry](#)
- [Immunofluorescence](#)
- [Immunoprecipitation](#)
- [Flow Cytometry](#)
- [Cell Culture](#)

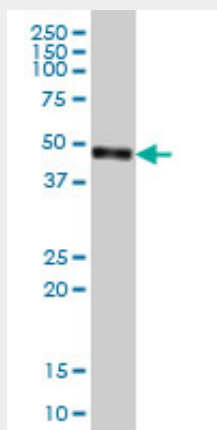
CPVL Antibody (monoclonal) (M01) - Images



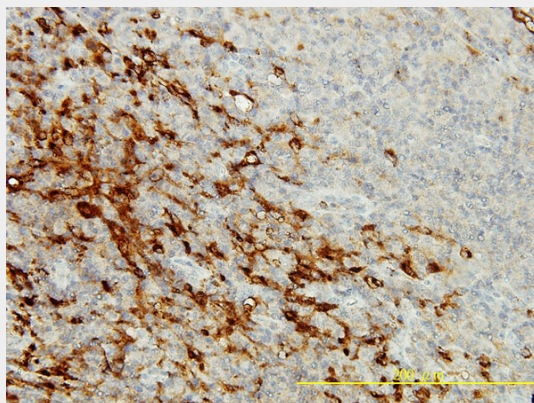
Immunofluorescence of monoclonal antibody to CPVL on HeLa cell. [antibody concentration 10 ug/ml]



Antibody Reactive Against Recombinant Protein. Western Blot detection against Immunogen (77.88 KDa) .



CPVL monoclonal antibody (M01), clone 2G5-1C1 Western Blot analysis of CPVL expression in Jurkat ((Cat # AT1615a)



Immunoperoxidase of monoclonal antibody to CPVL on formalin-fixed paraffin-embedded human lymphoma tissue.[antibody concentration 2 ug/ml]

CPVL Antibody (monoclonal) (M01) - Background

The protein encoded by this gene is a carboxypeptidase and bears strong sequence similarity to serine carboxypeptidases. Carboxypeptidases are a large class of proteases that act to cleave a single amino acid from the carboxy termini of proteins or peptides. The exact function of this protein, however, has not been determined. At least two alternatively spliced transcripts which encode the same protein have been observed.

CPVL Antibody (monoclonal) (M01) - References

Replication study for the association between four Loci identified by a genome-wide association study on European American subjects with type 1 diabetes and susceptibility to diabetic nephropathy in Japanese subjects with type 2 diabetes. Maeda S, et al. Diabetes, 2010 Aug. PMID 20460425. Personalized smoking cessation: interactions between nicotine dose, dependence and quit-success genotype score. Rose JE, et al. Mol Med, 2010 Jul-Aug. PMID 20379614. A genome-wide study of common SNPs and CNVs in cognitive performance in the CANTAB. Need AC, et al. Hum Mol Genet, 2009 Dec 1. PMID 19734545. Genome-wide association with diabetes-related traits in the Framingham Heart Study. Meigs JB, et al. BMC Med Genet, 2007 Sep 19. PMID 17903298. Large-scale mapping of human protein-protein interactions by mass spectrometry. Ewing RM, et al. Mol Syst Biol, 2007. PMID 17353931.