

**CREB3 Antibody (monoclonal) (M01)****Mouse monoclonal antibody raised against a partial recombinant CREB3.****Catalog # AT1617a****Specification**

---

**CREB3 Antibody (monoclonal) (M01) - Product Information**

Application	WB, IHC, E
Primary Accession	<a href="#">O43889</a>
Other Accession	<a href="#">NM_006368</a>
Reactivity	Human
Host	mouse
Clonality	Monoclonal
Isotype	IgG2a Kappa
Calculated MW	41379

**CREB3 Antibody (monoclonal) (M01) - Additional Information****Gene ID** 10488**Other Names**

Cyclic AMP-responsive element-binding protein 3, CREB-3, cAMP-responsive element-binding protein 3, Leucine zipper protein, Luman, Transcription factor LZIP-alpha, Processed cyclic AMP-responsive element-binding protein 3, N-terminal Luman, Transcriptionally active form, CREB3, LZIP

**Target/Specificity**

CREB3 (NP\_006359, 273 a.a. ~ 371 a.a) partial recombinant protein with GST tag. MW of the GST tag alone is 26 KDa.

**Dilution**

WB~~1:500~1000

IHC~~1:100~500

E~~N/A

**Format**

Clear, colorless solution in phosphate buffered saline, pH 7.2 .

**Storage**

Store at -20°C or lower. Aliquot to avoid repeated freezing and thawing.

**Precautions**

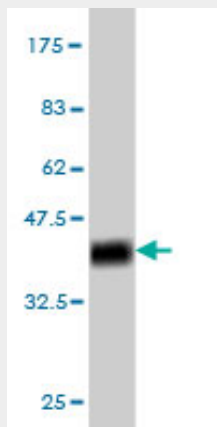
CREB3 Antibody (monoclonal) (M01) is for research use only and not for use in diagnostic or therapeutic procedures.

**CREB3 Antibody (monoclonal) (M01) - Protocols**

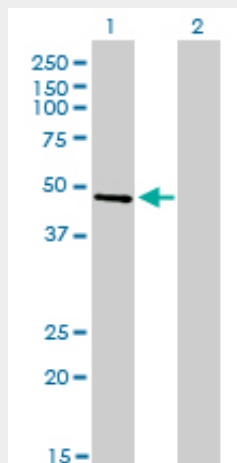
Provided below are standard protocols that you may find useful for product applications.

- [Western Blot](#)
- [Blocking Peptides](#)
- [Dot Blot](#)
- [Immunohistochemistry](#)
- [Immunofluorescence](#)
- [Immunoprecipitation](#)
- [Flow Cytometry](#)
- [Cell Culture](#)

### CREB3 Antibody (monoclonal) (M01) - Images



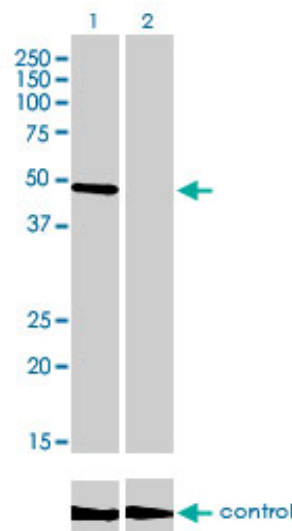
Antibody Reactive Against Recombinant Protein. Western Blot detection against Immunogen (36.63 KDa) .



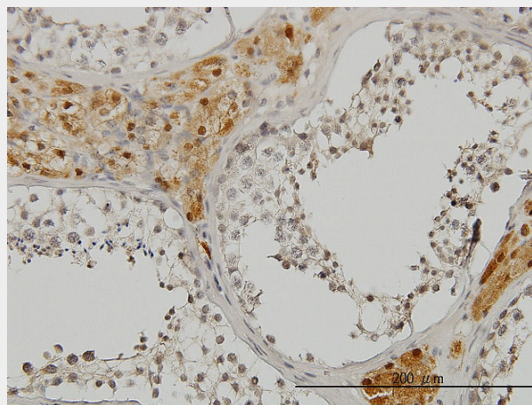
Western Blot analysis of CREB3 expression in transfected 293T cell line by CREB3 monoclonal antibody (M01), clone 3H5.

Lane 1: CREB3 transfected lysate(41.4 KDa).

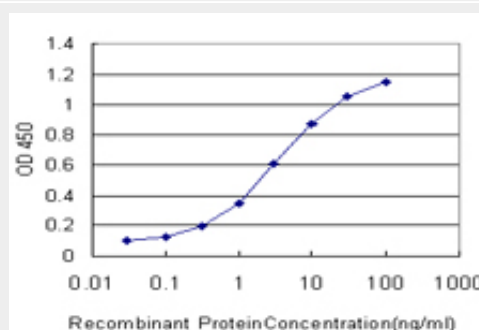
Lane 2: Non-transfected lysate.



Western blot analysis of CREB3 over-expressed 293 cell line, cotransfected with CREB3 Validated Chimera RNAi (Cat # AT1617a)



Immunoperoxidase of monoclonal antibody to CREB3 on formalin-fixed paraffin-embedded human testis. [antibody concentration 3 ug/ml]



Detection limit for recombinant GST tagged CREB3 is approximately 0.1ng/ml as a capture antibody.

### CREB3 Antibody (monoclonal) (M01) - Background

This gene encodes a transcription factor that is a member of the leucine zipper family of DNA binding proteins. This protein binds to the cAMP-response element and regulates cell proliferation. The protein interacts with host cell factor C1, which also associates with the herpes simplex virus (HSV) protein VP16 that induces transcription of HSV immediate-early genes. This protein and VP16 both bind to the same site on host cell factor C1. It is thought that the interaction between this

protein and host cell factor C1 plays a role in the establishment of latency during HSV infection. This protein also plays a role in leukocyte migration, tumor suppression, and endoplasmic reticulum stress-associated protein degradation. Additional transcript variants have been identified, but their biological validity has not been determined.

### **CREB3 Antibody (monoclonal) (M01) - References**

DC-STAMP interacts with ER-resident transcription factor LUMAN which becomes activated during DC maturation. Eleveld-Trancikova D, et al. Mol Immunol, 2010 Jul. PMID 20546900. A novel isoform of human LZIP negatively regulates the transactivation of the glucocorticoid receptor. Kang H, et al. Mol Endocrinol, 2009 Nov. PMID 19779205. A novel protein, Luman/CREB3 recruitment factor, inhibits Luman activation of the unfolded protein response. Audas TE, et al. Mol Cell Biol, 2008 Jun. PMID 18391022. Lithium response and genetic variation in the CREB family of genes. Mamdani F, et al. Am J Med Genet B Neuropsychiatr Genet, 2008 Jun 5. PMID 18189280. Regulation of human LZIP expression by NF-kappaB and its involvement in monocyte cell migration induced by Lkn-1. Jang SW, et al. J Biol Chem, 2007 Apr 13. PMID 17296613.