

CRIM1 Antibody (monoclonal) (M01)

Mouse monoclonal antibody raised against a partial recombinant CRIM1.

Catalog # AT1623a

Specification

CRIM1 Antibody (monoclonal) (M01) - Product Information

Application	WB, IHC, E
Primary Accession	O9NZV1
Other Accession	NM_016441
Reactivity	Human
Host	mouse
Clonality	Monoclonal
Isotype	IgG2a Kappa
Calculated MW	113738

CRIM1 Antibody (monoclonal) (M01) - Additional Information

Gene ID 51232

Other Names

Cysteine-rich motor neuron 1 protein, CRIM-1, Cysteine-rich repeat-containing protein S52, Processed cysteine-rich motor neuron 1 protein, CRIM1, S52

Target/Specificity

CRIM1 (NP_057525, 36 a.a. ~ 145 a.a) partial recombinant protein with GST tag. MW of the GST tag alone is 26 KDa.

Dilution

WB~~1:500~1000

IHC~~1:100~500

E~~N/A

Format

Clear, colorless solution in phosphate buffered saline, pH 7.2 .

Storage

Store at -20°C or lower. Aliquot to avoid repeated freezing and thawing.

Precautions

CRIM1 Antibody (monoclonal) (M01) is for research use only and not for use in diagnostic or therapeutic procedures.

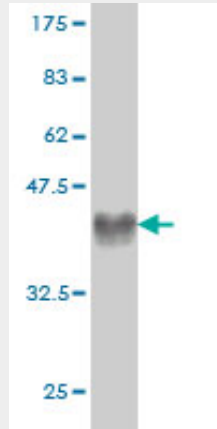
CRIM1 Antibody (monoclonal) (M01) - Protocols

Provided below are standard protocols that you may find useful for product applications.

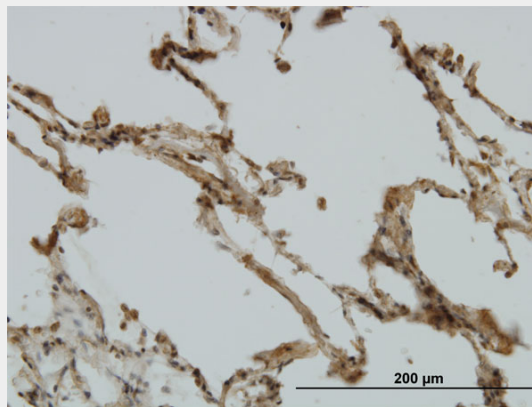
- [Western Blot](#)

- [Blocking Peptides](#)
- [Dot Blot](#)
- [Immunohistochemistry](#)
- [Immunofluorescence](#)
- [Immunoprecipitation](#)
- [Flow Cytometry](#)
- [Cell Culture](#)

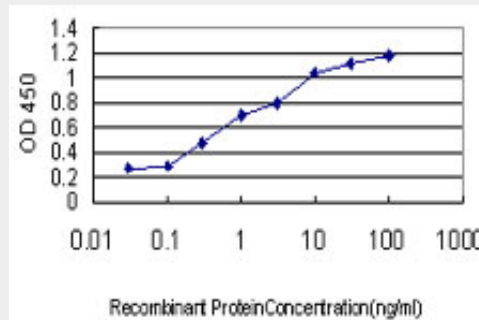
CRIM1 Antibody (monoclonal) (M01) - Images



Antibody Reactive Against Recombinant Protein. Western Blot detection against Immunogen (37.84 KDa) .



Immunoperoxidase of monoclonal antibody to CRIM1 on formalin-fixed paraffin-embedded human lung. [antibody concentration 3 ug/ml]



Detection limit for recombinant GST tagged CRIM1 is approximately 0.03ng/ml as a capture antibody.

CRIM1 Antibody (monoclonal) (M01) - Background

Motor neurons are among the earliest neurons to appear after the commencement of cell patterning and the beginning of cell differentiation. Differentiation occurs in a ventral-to-dorsal gradient and is mediated, at least in part, by the concentration of ventrally expressed Sonic hedgehog protein (SHH; MIM 600725). Dorsally expressed factors, such as members of the bone morphogenic protein (e.g., BMP4; MIM 112262) and transforming growth factor-beta (e.g., TGFB1; MIM 190180) families, can repress the induction of these neurons. CRIM1 may interact with growth factors implicated in motor neuron differentiation and survival (Kolle et al., 2000 [PubMed 10642437]).

CRIM1 Antibody (monoclonal) (M01) - References

Personalized smoking cessation: interactions between nicotine dose, dependence and quit-success genotype score. Rose JE, et al. Mol Med, 2010 Jul-Aug. PMID 20379614. Genome-wide association study of anthropometric traits in Korcula Island, Croatia. Polasek O, et al. Croat Med J, 2009 Feb. PMID 19260139. The status, quality, and expansion of the NIH full-length cDNA project: the Mammalian Gene Collection (MGC). Gerhard DS, et al. Genome Res, 2004 Oct. PMID 15489334. Signal peptide prediction based on analysis of experimentally verified cleavage sites. Zhang Z, et al. Protein Sci, 2004 Oct. PMID 15340161. The secreted protein discovery initiative (SPDI), a large-scale effort to identify novel human secreted and transmembrane proteins: a bioinformatics assessment. Clark HF, et al. Genome Res, 2003 Oct. PMID 12975309.