

CRLF1 Antibody (monoclonal) (M01)**Mouse monoclonal antibody raised against a partial recombinant CRLF1.****Catalog # AT1626a****Specification**

CRLF1 Antibody (monoclonal) (M01) - Product Information

Application	WB, IP, E
Primary Accession	O75462
Other Accession	NM_004750
Reactivity	Human
Host	mouse
Clonality	Monoclonal
Isotype	IgG2a Kappa
Calculated MW	46302

CRLF1 Antibody (monoclonal) (M01) - Additional Information**Gene ID** 9244**Other Names**

Cytokine receptor-like factor 1, Cytokine-like factor 1, CLF-1, ZcytoR5, CRLF1

Target/Specificity

CRLF1 (NP_004741, 135 a.a. ~ 230 a.a) partial recombinant protein with GST tag. MW of the GST tag alone is 26 KDa.

Dilution

WB~~1:500~1000

IP~~N/A

E~~N/A

Format

Clear, colorless solution in phosphate buffered saline, pH 7.2 .

Storage

Store at -20°C or lower. Aliquot to avoid repeated freezing and thawing.

Precautions

CRLF1 Antibody (monoclonal) (M01) is for research use only and not for use in diagnostic or therapeutic procedures.

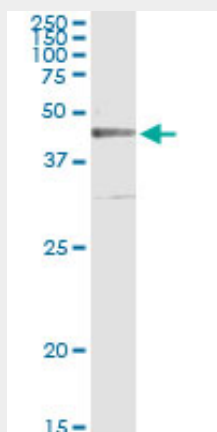
CRLF1 Antibody (monoclonal) (M01) - Protocols

Provided below are standard protocols that you may find useful for product applications.

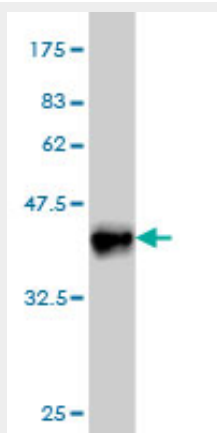
- [Western Blot](#)
- [Blocking Peptides](#)

- [Dot Blot](#)
- [Immunohistochemistry](#)
- [Immunofluorescence](#)
- [Immunoprecipitation](#)
- [Flow Cytometry](#)
- [Cell Culture](#)

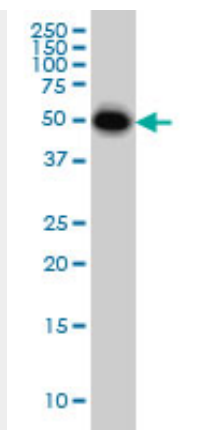
CRLF1 Antibody (monoclonal) (M01) - Images



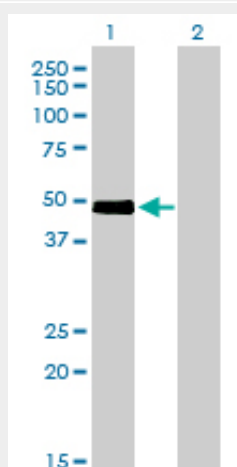
Immunoprecipitation of CRLF1 transfected lysate using anti-CRLF1 monoclonal antibody and Protein A Magnetic Bead ([U0007](#)), and immunoblotted with CRLF1 MaxPab rabbit polyclonal antibody.



Antibody Reactive Against Recombinant Protein. Western Blot detection against Immunogen (36.3 kDa) .



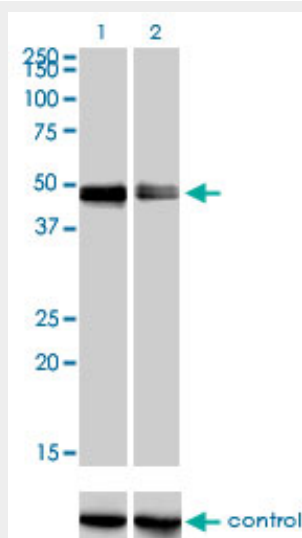
CRLF1 monoclonal antibody (M01), clone 4F4 Western Blot analysis of CRLF1 expression in HeLa (Cat # AT1626a)



Western Blot analysis of CRLF1 expression in transfected 293T cell line by CRLF1 monoclonal antibody (M01), clone 4F4.

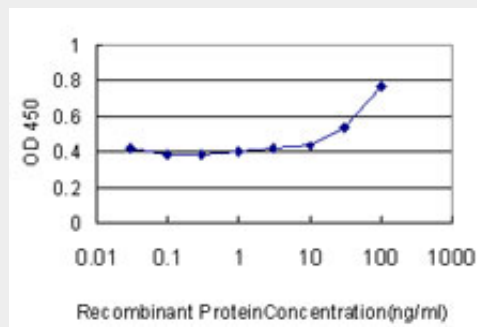
Lane 1: CRLF1 transfected lysate(46.3 KDa).

Lane 2: Non-transfected lysate.



Western blot analysis of CRLF1 over-expressed 293 cell line, cotransfected with CRLF1 Validated

Chimera RNAi (Cat # AT1626a)



Detection limit for recombinant GST tagged CRLF1 is approximately 0.03ng/ml as a capture antibody.

CRLF1 Antibody (monoclonal) (M01) - Background

This gene encodes a member of the cytokine type I receptor family. The protein forms a secreted complex with cardiotrophin-like cytokine factor 1 and acts on cells expressing ciliary neurotrophic factor receptors. The complex can promote survival of neuronal cells. Mutations in this gene result in Crisponi syndrome and cold-induced sweating syndrome.

CRLF1 Antibody (monoclonal) (M01) - References

Cytokine receptor-like factor 1 is highly expressed in damaged human knee osteoarthritic cartilage and involved in osteoarthritis downstream of TGF-beta. Tsuritani K, et al. Calcif Tissue Int, 2010 Jan. PMID 19921088. Crisponi syndrome is caused by mutations in the CRLF1 gene and is allelic to cold-induced sweating syndrome type 1. Crisponi L, et al. Am J Hum Genet, 2007 May. PMID 17436252. Mutations in cytokine receptor-like factor 1 (CRLF1) account for both Crisponi and cold-induced sweating syndromes. Dagoneau N, et al. Am J Hum Genet, 2007 May. PMID 17436251. The status, quality, and expansion of the NIH full-length cDNA project: the Mammalian Gene Collection (MGC). Gerhard DS, et al. Genome Res, 2004 Oct. PMID 15489334. Signal peptide prediction based on analysis of experimentally verified cleavage sites. Zhang Z, et al. Protein Sci, 2004 Oct. PMID 15340161.