

**CRLF2 Antibody (monoclonal) (M03)****Mouse monoclonal antibody raised against a partial recombinant CRLF2.****Catalog # AT1628a****Specification**

---

**CRLF2 Antibody (monoclonal) (M03) - Product Information**

Application	WB, E
Primary Accession	<a href="#">O9HC73</a>
Other Accession	<a href="#">NM_022148</a>
Reactivity	Human
Host	mouse
Clonality	Monoclonal
Isotype	IgG2a Kappa
Calculated MW	42013

**CRLF2 Antibody (monoclonal) (M03) - Additional Information****Gene ID** 64109**Other Names**

Cytokine receptor-like factor 2, Cytokine receptor-like 2, IL-XR, Thymic stromal lymphopoietin protein receptor, TSLP receptor, CRLF2, CRL2, ILXR, TSLPR

**Target/Specificity**

CRLF2 (NP\_071431, 23 a.a. ~ 132 a.a) partial recombinant protein with GST tag. MW of the GST tag alone is 26 KDa.

**Dilution**

WB~~1:500~1000

E~~N/A

**Format**

Clear, colorless solution in phosphate buffered saline, pH 7.2 .

**Storage**

Store at -20°C or lower. Aliquot to avoid repeated freezing and thawing.

**Precautions**

CRLF2 Antibody (monoclonal) (M03) is for research use only and not for use in diagnostic or therapeutic procedures.

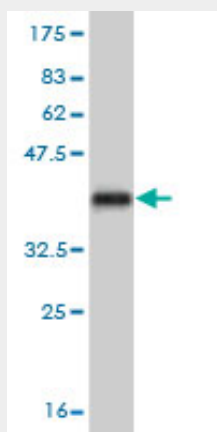
**CRLF2 Antibody (monoclonal) (M03) - Protocols**

Provided below are standard protocols that you may find useful for product applications.

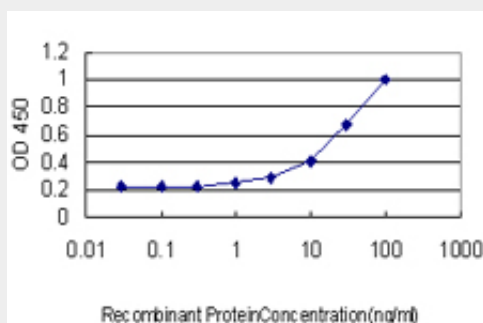
- [Western Blot](#)
- [Blocking Peptides](#)

- [Dot Blot](#)
- [Immunohistochemistry](#)
- [Immunofluorescence](#)
- [Immunoprecipitation](#)
- [Flow Cytometry](#)
- [Cell Culture](#)

### CRLF2 Antibody (monoclonal) (M03) - Images



Antibody Reactive Against Recombinant Protein. Western Blot detection against Immunogen (37.84 kDa) .



Detection limit for recombinant GST tagged CRLF2 is approximately 3ng/ml as a capture antibody.

### CRLF2 Antibody (monoclonal) (M03) - Background

Cytokine signals are mediated through specific receptor complexes, the components of which are mostly members of the type I cytokine receptor family. Type I cytokine receptors share conserved structural features in their extracellular domain. Receptor complexes are typically heterodimeric, consisting of alpha chains, which provide ligand specificity, and beta (or gamma) chains, which are required for the formation of high-affinity binding sites and signal transduction.

### CRLF2 Antibody (monoclonal) (M03) - References

Identifying the polymorphisms in the thymic stromal lymphopoietin receptor (TSLPR) and their association with asthma. Yu JI, et al. BMB Rep, 2010 Jul. PMID 20663412. Thymic stromal lymphopoietin receptor-mediated IL-6 and CC/CXC chemokines expression in human airway smooth muscle cells: role of MAPKs (ERK1/2, p38, and JNK) and STAT3 pathways. Shan L, et al. J Immunol, 2010 Jun 15. PMID 20483734. Genetic variants in thymic stromal lymphopoietin are associated with atopic dermatitis and eczema herpeticum. Gao PS, et al. J Allergy Clin Immunol, 2010 Jun. PMID 20466416. Presence of the P2RY8-CRLF2 rearrangement is associated with a poor prognosis in

non-high-risk precursor B-cell acute lymphoblastic leukemia in children treated according to the ALL-BFM 2000 protocol. Cario G, et al. Blood, 2010 Jul 1. PMID 20378752. Thymic stromal lymphopoietin-induced human asthmatic airway epithelial cell proliferation through an IL-13-dependent pathway. Semlali A, et al. J Allergy Clin Immunol, 2010 Apr. PMID 20236697.