

**CRMP1 Antibody (monoclonal) (M50)****Mouse monoclonal antibody raised against a partial recombinant CRMP1.****Catalog # AT1629a****Specification**

---

**CRMP1 Antibody (monoclonal) (M50) - Product Information**

Application	WB, E
Primary Accession	<a href="#">Q14194</a>
Other Accession	<a href="#">NM_001014809</a>
Reactivity	Human
Host	mouse
Clonality	Monoclonal
Isotype	IgG2a Kappa
Calculated MW	62184

**CRMP1 Antibody (monoclonal) (M50) - Additional Information****Gene ID** 1400**Other Names**

Dihydropyrimidinase-related protein 1, DRP-1, Collapsin response mediator protein 1, CRMP-1, Unc-33-like phosphoprotein 3, ULIP-3, CRMP1, DPYSL1, ULIP3

**Target/Specificity**

CRMP1 (NP\_001014809.1, 221 a.a. ~ 310 a.a) partial recombinant protein with GST tag. MW of the GST tag alone is 26 KDa.

**Dilution**

WB~~1:500~1000

E~~N/A

**Format**

Clear, colorless solution in phosphate buffered saline, pH 7.2 .

**Storage**

Store at -20°C or lower. Aliquot to avoid repeated freezing and thawing.

**Precautions**

CRMP1 Antibody (monoclonal) (M50) is for research use only and not for use in diagnostic or therapeutic procedures.

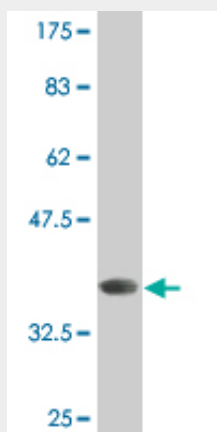
**CRMP1 Antibody (monoclonal) (M50) - Protocols**

Provided below are standard protocols that you may find useful for product applications.

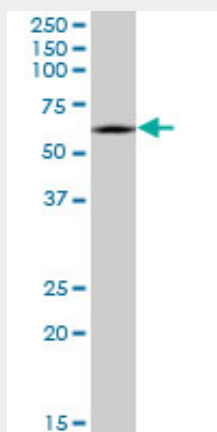
- [Western Blot](#)
- [Blocking Peptides](#)

- [Dot Blot](#)
- [Immunohistochemistry](#)
- [Immunofluorescence](#)
- [Immunoprecipitation](#)
- [Flow Cytometry](#)
- [Cell Culture](#)

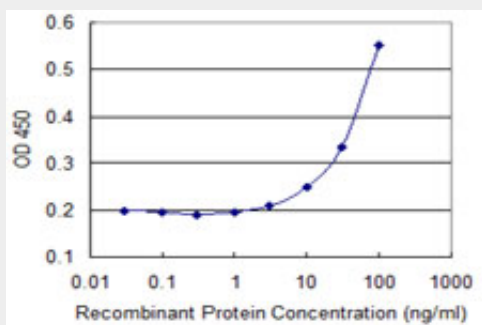
### CRMP1 Antibody (monoclonal) (M50) - Images



Antibody Reactive Against Recombinant Protein. Western Blot detection against Immunogen (35.64 kDa) .



CRMP1 monoclonal antibody (M50), clone 2B6. Western Blot analysis of CRMP1 expression in IMR-32 (Cat # AT1629a)



Detection limit for recombinant GST tagged CRMP1 is 3 ng/ml as a capture antibody.

### CRMP1 Antibody (monoclonal) (M50) - Background

This gene encodes a member of a family of cytosolic phosphoproteins expressed exclusively in the nervous system. The encoded protein is thought to be a part of the semaphorin signal transduction pathway implicated in semaphorin-induced growth cone collapse during neural development. Alternative splicing results in multiple transcript variants.

### **CRMP1 Antibody (monoclonal) (M50) - References**

Personalized smoking cessation: interactions between nicotine dose, dependence and quit-success genotype score. Rose JE, et al. Mol Med, 2010 Jul-Aug. PMID 20379614. Association between genes on chromosome 4p16 and non-syndromic oral clefts in four populations. Ingersoll RG, et al. Eur J Hum Genet, 2010 Jun. PMID 20087401. Loss of collapsin response mediator Protein1, as detected by iTRAQ analysis, promotes invasion of human gliomas expressing mutant EGFRvIII. Mukherjee J, et al. Cancer Res, 2009 Nov 15. PMID 19903856. Mitochondrial alterations in PINK1 deficient cells are influenced by calcineurin-dependent dephosphorylation of dynamin-related protein 1. Sandebring A, et al. PLoS One, 2009 May 27. PMID 19492085. Loss of Drp1 function alters OPA1 processing and changes mitochondrial membrane organization. M?pert K, et al. Exp Cell Res, 2009 Aug 1. PMID 19409380.