

CRSP6 Antibody (monoclonal) (M02)**Mouse monoclonal antibody raised against a partial recombinant CRSP6.****Catalog # AT1632a****Specification**

CRSP6 Antibody (monoclonal) (M02) - Product Information

Application	WB, IF, E
Primary Accession	O9NVC6
Other Accession	BC021101
Reactivity	Human
Host	mouse
Clonality	Monoclonal
Isotype	IgG1 Kappa
Calculated MW	72890

CRSP6 Antibody (monoclonal) (M02) - Additional Information**Gene ID** 9440**Other Names**

Mediator of RNA polymerase II transcription subunit 17, Activator-recruited cofactor 77 kDa component, ARC77, Cofactor required for Sp1 transcriptional activation subunit 6, CRSP complex subunit 6, Mediator complex subunit 17, Thyroid hormone receptor-associated protein complex 80 kDa component, Trap80, Transcriptional coactivator CRSP77, Vitamin D3 receptor-interacting protein complex 80 kDa component, DRIP80, MED17, ARC77, CRSP6, DRIP77, DRIP80, TRAP80

Target/Specificity

CRSP6 (AAH21101, 551 a.a. ~ 651 a.a) partial recombinant protein with GST tag. MW of the GST tag alone is 26 KDa.

Dilution

WB~~1:500~1000

IF~~1:50~200

E~~N/A

Format

Clear, colorless solution in phosphate buffered saline, pH 7.2 .

Storage

Store at -20°C or lower. Aliquot to avoid repeated freezing and thawing.

Precautions

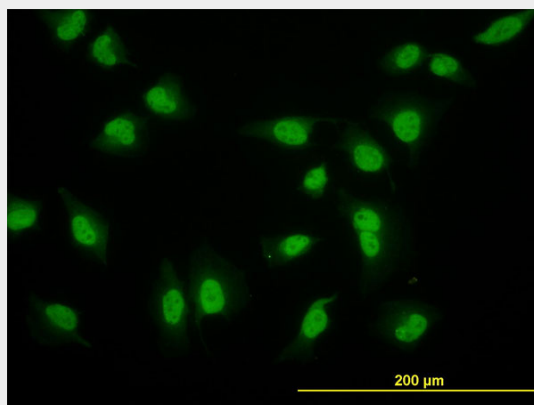
CRSP6 Antibody (monoclonal) (M02) is for research use only and not for use in diagnostic or therapeutic procedures.

CRSP6 Antibody (monoclonal) (M02) - Protocols

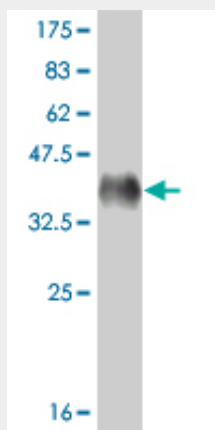
Provided below are standard protocols that you may find useful for product applications.

- [Western Blot](#)
- [Blocking Peptides](#)
- [Dot Blot](#)
- [Immunohistochemistry](#)
- [Immunofluorescence](#)
- [Immunoprecipitation](#)
- [Flow Cytometry](#)
- [Cell Culture](#)

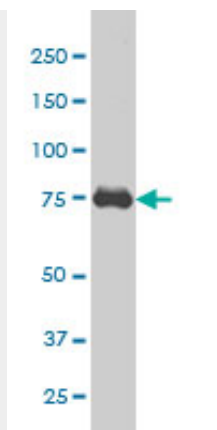
CRSP6 Antibody (monoclonal) (M02) - Images



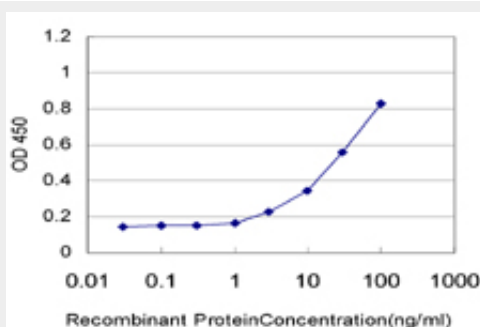
Immunofluorescence of monoclonal antibody to CRSP6 on HeLa cell. [antibody concentration 10 ug/ml]



Antibody Reactive Against Recombinant Protein. Western Blot detection against Immunogen (36.85 KDa) .



CRSP6 monoclonal antibody (M02), clone 1B5 Western Blot analysis of CRSP6 expression in HeLa S3 NE (Cat # AT1632a)



Detection limit for recombinant GST tagged CRSP6 is approximately 3ng/ml as a capture antibody.

CRSP6 Antibody (monoclonal) (M02) - Background

The activation of gene transcription is a multistep process that is triggered by factors that recognize transcriptional enhancer sites in DNA. These factors work with co-activators to direct transcriptional initiation by the RNA polymerase II apparatus. The protein encoded by this gene is a subunit of the CRSP (cofactor required for SP1 activation) complex, which, along with TFIID, is required for efficient activation by SP1. This protein is also a component of other multisubunit complexes e.g. thyroid hormone receptor-(TR-) associated proteins which interact with TR and facilitate TR function on DNA templates in conjunction with initiation factors and cofactors.

CRSP6 Antibody (monoclonal) (M02) - References

1. Mediator complex recruits epigenetic regulators via its two cyclin-dependent kinase subunits to repress transcription of immune-response genes. Tsutsui T, Fukasawa R, Shinmyozu K, Nakagawa R, Tobe K, Tanaka A, Ohkuma YJ Biol Chem. 2013 Jun 9.