

CRX Antibody (monoclonal) (M03)
Mouse monoclonal antibody raised against a partial recombinant CRX.
Catalog # AT1638a

Specification

CRX Antibody (monoclonal) (M03) - Product Information

Application	WB, E
Primary Accession	O43186
Other Accession	NM_000554
Reactivity	Human, Rat
Host	mouse
Clonality	Monoclonal
Isotype	IgG2a Kappa
Calculated MW	32261

CRX Antibody (monoclonal) (M03) - Additional Information

Gene ID 1406

Other Names

Cone-rod homeobox protein, CRX, CORD2

Target/Specificity

CRX (NP_000545, 1 a.a. ~ 95 a.a) partial recombinant protein with GST tag. MW of the GST tag alone is 26 KDa.

Dilution

WB~~1:500~1000

E~~N/A

Format

Clear, colorless solution in phosphate buffered saline, pH 7.2 .

Storage

Store at -20°C or lower. Aliquot to avoid repeated freezing and thawing.

Precautions

CRX Antibody (monoclonal) (M03) is for research use only and not for use in diagnostic or therapeutic procedures.

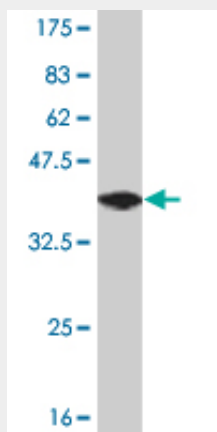
CRX Antibody (monoclonal) (M03) - Protocols

Provided below are standard protocols that you may find useful for product applications.

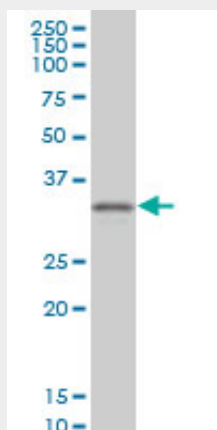
- [Western Blot](#)
- [Blocking Peptides](#)
- [Dot Blot](#)

- [Immunohistochemistry](#)
- [Immunofluorescence](#)
- [Immunoprecipitation](#)
- [Flow Cytometry](#)
- [Cell Culture](#)

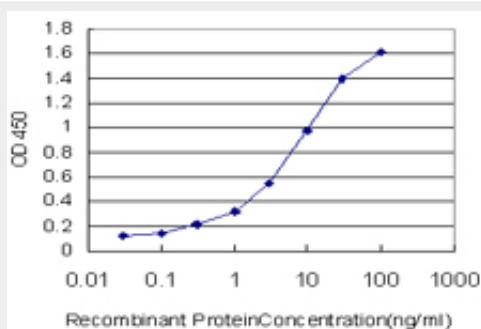
CRX Antibody (monoclonal) (M03) - Images



Antibody Reactive Against Recombinant Protein. Western Blot detection against Immunogen (36.19 kDa) .



CRX monoclonal antibody (M03), clone 2F12 Western Blot analysis of CRX expression in PC-12 (Cat # AT1638a)



Detection limit for recombinant GST tagged CRX is approximately 0.1 ng/ml as a capture antibody.

CRX Antibody (monoclonal) (M03) - Background

The protein encoded by this gene is a photoreceptor-specific transcription factor which plays a role in the differentiation of photoreceptor cells. This homeodomain protein is necessary for the maintenance of normal cone and rod function. Mutations in this gene are associated with photoreceptor degeneration, Leber congenital amaurosis type III and the autosomal dominant cone-rod dystrophy 2. Several alternatively spliced transcript variants of this gene have been described, but the full-length nature of some variants has not been determined.

CRX Antibody (monoclonal) (M03) - References

1. OTX2 and CRX rescue overlapping and photoreceptor-specific functions in the *Drosophila* eye. Terrell D, Xie B, Workman M, Mahato S, Zelhof A, Gebelein B, Cook T. *Dev Dyn*. 2012 Jan;241(1):215-28. doi: 10.1002/dvdy.22782. Epub 2011 Nov 23.