

CSF1 Antibody (monoclonal) (M01)

Mouse monoclonal antibody raised against a partial recombinant CSF1.

Catalog # AT1655a

Specification

CSF1 Antibody (monoclonal) (M01) - Product Information

Application	WB, E
Primary Accession	P09603
Other Accession	BC021117
Reactivity	Human
Host	mouse
Clonality	Monoclonal
Isotype	IgG1 Kappa
Calculated MW	60179

CSF1 Antibody (monoclonal) (M01) - Additional Information**Gene ID** 1435**Other Names**

Macrophage colony-stimulating factor 1, CSF-1, M-CSF, MCSF, Lanimostim, Processed macrophage colony-stimulating factor 1, CSF1

Target/Specificity

CSF1 (AAH21117, 33 a.a. ~ 132 a.a) partial recombinant protein with GST tag. MW of the GST tag alone is 26 KDa.

Dilution

WB~~1:500~1000

E~~N/A

Format

Clear, colorless solution in phosphate buffered saline, pH 7.2 .

Storage

Store at -20°C or lower. Aliquot to avoid repeated freezing and thawing.

Precautions

CSF1 Antibody (monoclonal) (M01) is for research use only and not for use in diagnostic or therapeutic procedures.

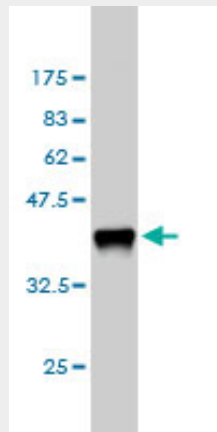
CSF1 Antibody (monoclonal) (M01) - Protocols

Provided below are standard protocols that you may find useful for product applications.

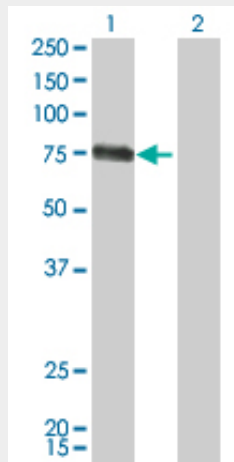
- [Western Blot](#)
- [Blocking Peptides](#)

- [Dot Blot](#)
- [Immunohistochemistry](#)
- [Immunofluorescence](#)
- [Immunoprecipitation](#)
- [Flow Cytometry](#)
- [Cell Culture](#)

CSF1 Antibody (monoclonal) (M01) - Images

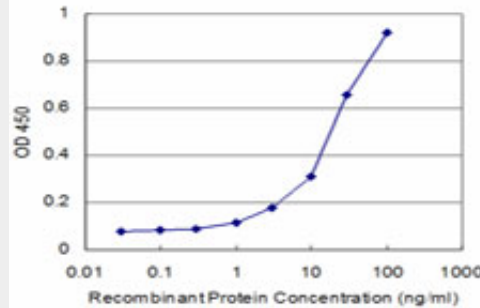


Antibody Reactive Against Recombinant Protein. Western Blot detection against Immunogen (36.63 kDa) .



Western Blot analysis of CSF1 expression in transfected 293T cell line by CSF1 monoclonal antibody (M01), clone 1A9.

Lane 1: CSF1 transfected lysate(60.1 kDa).
Lane 2: Non-transfected lysate.



Detection limit for recombinant GST tagged CSF1 is approximately 3ng/ml as a capture antibody.

CSF1 Antibody (monoclonal) (M01) - Background

The protein encoded by this gene is a cytokine that controls the production, differentiation, and function of macrophages. The active form of the protein is found extracellularly as a disulfide-linked homodimer, and is thought to be produced by proteolytic cleavage of membrane-bound precursors. The encoded protein may be involved in development of the placenta. Four transcript variants encoding three different isoforms have been found for this gene.

CSF1 Antibody (monoclonal) (M01) - References

1. miR148b is a major coordinator of breast cancer progression in a relapse-associated microRNA signature by targeting ITGA5, ROCK1, PIK3CA, NRAS, and CSF1. Cimino D, De Pitta C, Orso F, Zampini M, Casara S, Penna E, Quaglino E, Forni M, Damasco C, Pinatel E, Ponzzone R, Romualdi C, Brisken C, De Bortoli M, Biglia N, Provero P, Lanfranchi G, Taverna DFASEB J. 2013 Mar;27(3):1223-35. doi: 10.1096/fj.12-214692. Epub 2012 Dec 11. 2. Pathway-Based Biomarker Search by High-Throughput Proteomics Profiling of Secretomes. Lawlor K, Nazarian A, Lacomis L, Tempst P, Villanueva J. J Proteome Res. 2009 Mar;8(3):1489-503.