

CSRP1 Antibody (monoclonal) (M06)**Mouse monoclonal antibody raised against a partial recombinant CSRP1.****Catalog # AT1658a****Specification**

CSRP1 Antibody (monoclonal) (M06) - Product Information

Application	WB, IF, E
Primary Accession	P21291
Other Accession	NM_004078
Reactivity	Human
Host	mouse
Clonality	Monoclonal
Isotype	IgG2a Kappa
Calculated MW	20567

CSRP1 Antibody (monoclonal) (M06) - Additional Information**Gene ID** 1465**Other Names**

Cysteine and glycine-rich protein 1, Cysteine-rich protein 1, CRP, CRP1, Epididymis luminal protein 141, HEL-141, CSRP1, CSRP, CYRP

Target/Specificity

CSRP1 (NP_004069, 94 a.a. ~ 192 a.a) partial recombinant protein with GST tag. MW of the GST tag alone is 26 KDa.

Dilution

WB~~1:500~1000

IF~~1:50~200

E~~N/A

Format

Clear, colorless solution in phosphate buffered saline, pH 7.2 .

Storage

Store at -20°C or lower. Aliquot to avoid repeated freezing and thawing.

Precautions

CSRP1 Antibody (monoclonal) (M06) is for research use only and not for use in diagnostic or therapeutic procedures.

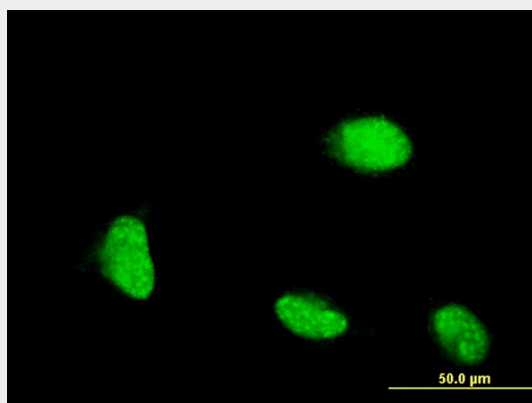
CSRP1 Antibody (monoclonal) (M06) - Protocols

Provided below are standard protocols that you may find useful for product applications.

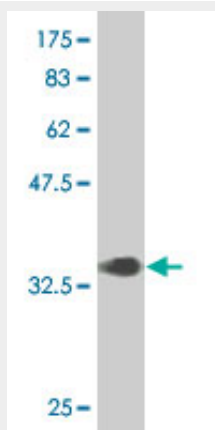
- [Western Blot](#)

- [Blocking Peptides](#)
- [Dot Blot](#)
- [Immunohistochemistry](#)
- [Immunofluorescence](#)
- [Immunoprecipitation](#)
- [Flow Cytometry](#)
- [Cell Culture](#)

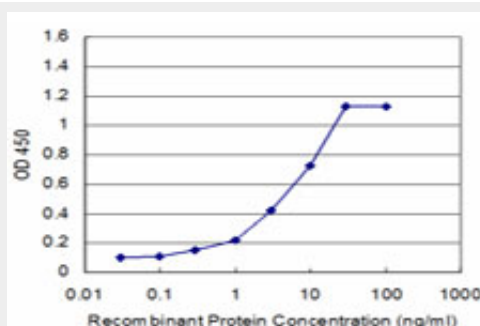
CSRP1 Antibody (monoclonal) (M06) - Images



Immunofluorescence of monoclonal antibody to CSRP1 on HeLa cell . [antibody concentration 10 ug/ml]



Antibody Reactive Against Recombinant Protein. Western Blot detection against Immunogen (36.63 KDa) .



Detection limit for recombinant GST tagged CSRP1 is approximately 0.3ng/ml as a capture antibody.

CSR1 Antibody (monoclonal) (M06) - Background

This gene encodes a member of the cysteine-rich protein (CSR) family. This gene family includes a group of LIM domain proteins, which may be involved in regulatory processes important for development and cellular differentiation. The LIM/double zinc-finger motif found in this gene product occurs in proteins with critical functions in gene regulation, cell growth, and somatic differentiation. Alternatively spliced transcript variants have been described.

CSR1 Antibody (monoclonal) (M06) - References

Ultraviolet B radiation regulates cysteine-rich protein 1 in human keratinocytes. Latonen L, et al. Photodermatol Photoimmunol Photomed, 2010 Apr. PMID 20415737. Personalized smoking cessation: interactions between nicotine dose, dependence and quit-success genotype score. Rose JE, et al. Mol Med, 2010 Jul-Aug. PMID 20379614. Hypomethylation of WNT5A, CRIP1 and S100P in prostate cancer. Wang Q, et al. Oncogene, 2007 Oct 4. PMID 17486081. Methylation status of genes upregulated by demethylating agent 5-aza-2'-deoxycytidine in hepatocellular carcinoma. Hirasawa Y, et al. Oncology, 2006. PMID 17341888. Global, in vivo, and site-specific phosphorylation dynamics in signaling networks. Olsen JV, et al. Cell, 2006 Nov 3. PMID 17081983.