

CSRP3 Antibody (monoclonal) (M03)
Mouse monoclonal antibody raised against a partial recombinant CSRP3.
Catalog # AT1659a

Specification

CSRP3 Antibody (monoclonal) (M03) - Product Information

Application	WB, IF
Primary Accession	P50461
Other Accession	NM_003476
Reactivity	Human
Host	mouse
Clonality	Monoclonal
Isotype	IgG2a Kappa
Calculated MW	20969

CSRP3 Antibody (monoclonal) (M03) - Additional Information

Gene ID 8048

Other Names

Cysteine and glycine-rich protein 3, Cardiac LIM protein, Cysteine-rich protein 3, CRP3, LIM domain protein, cardiac, Muscle LIM protein, CSRP3, CLP, MLP

Target/Specificity

CSRP3 (NP_003467, 95 a.a. ~ 194 a.a) partial recombinant protein with GST tag. MW of the GST tag alone is 26 KDa.

Dilution

WB~~1:500~1000

IF~~1:50~200

Format

Clear, colorless solution in phosphate buffered saline, pH 7.2 .

Storage

Store at -20°C or lower. Aliquot to avoid repeated freezing and thawing.

Precautions

CSRP3 Antibody (monoclonal) (M03) is for research use only and not for use in diagnostic or therapeutic procedures.

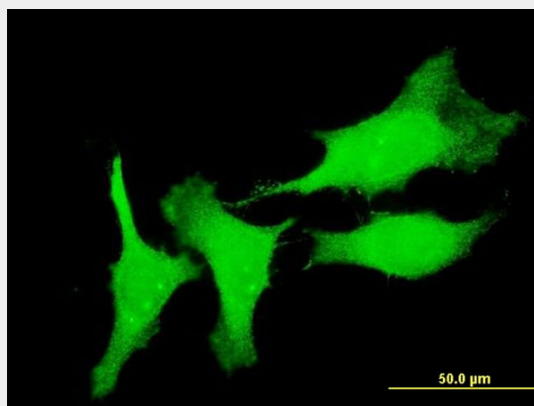
CSRP3 Antibody (monoclonal) (M03) - Protocols

Provided below are standard protocols that you may find useful for product applications.

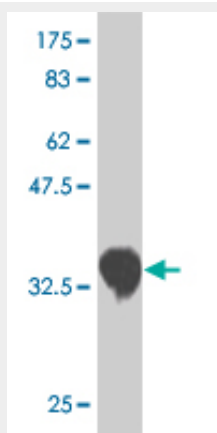
- [Western Blot](#)
- [Blocking Peptides](#)

- [Dot Blot](#)
- [Immunohistochemistry](#)
- [Immunofluorescence](#)
- [Immunoprecipitation](#)
- [Flow Cytometry](#)
- [Cell Culture](#)

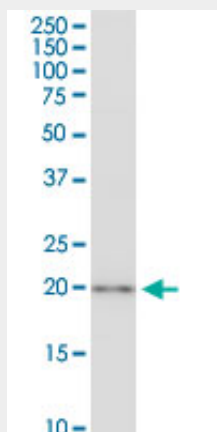
CSRP3 Antibody (monoclonal) (M03) - Images



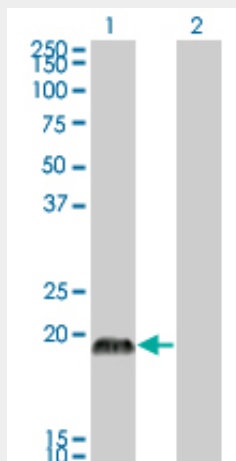
Immunofluorescence of monoclonal antibody to CSRP3 on HeLa cell . [antibody concentration 10 ug/ml]



Antibody Reactive Against Recombinant Protein. Western Blot detection against Immunogen (36.74 KDa) .



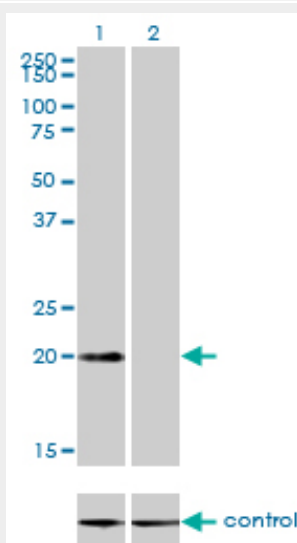
CSRP3 monoclonal antibody (M03), clone 6D2. Western Blot analysis of CSRP3 expression in Hela S3 NE.



Western Blot analysis of CSRP3 expression in transfected 293T cell line by CSRP3 monoclonal antibody (M03), clone 6D2.

Lane 1: CSRP3 transfected lysate(20.969 kDa).

Lane 2: Non-transfected lysate.



Western blot analysis of CSRP3 over-expressed 293 cell line, cotransfected with CSRP3 Validated Chimera RNAi (Cat # AT1659a)

CSRP3 Antibody (monoclonal) (M03) - Background

This gene encodes a member of the CSRP family of LIM domain proteins, which may be involved in regulatory processes important for development and cellular differentiation. The LIM/double zinc-finger motif found in this protein is found in a group of proteins with critical functions in gene regulation, cell growth, and somatic differentiation. Mutations in this gene are thought to cause heritable forms of hypertrophic cardiomyopathy (HCM) and dilated cardiomyopathy (DCM) in humans. Alternatively spliced transcript variants with different 5' UTR, but encoding the same protein, have been found for this gene.

CSRP3 Antibody (monoclonal) (M03) - References

Variation at the NFATC2 Locus Increases the Risk of Thiazolinedinedione-Induced Edema in the Diabetes REduction Assessment with ramipril and rosiglitazone Medication (DREAM) Study. Bailey SD, et al. Diabetes Care, 2010 Jul 13. PMID 20628086. A novel custom resequencing array for dilated cardiomyopathy. Zimmerman RS, et al. Genet Med, 2010 May. PMID 20474083. Common susceptibility variants examined for association with dilated cardiomyopathy. Rampersaud E, et al. Ann Hum Genet, 2010 Mar. PMID 20201937. Gene-centric association signals for lipids and apolipoproteins identified via the HumanCVD BeadChip. Talmud PJ, et al. Am J Hum Genet, 2009 Nov. PMID 19913121. The role of Lamin A/C mutations in Danish patients with idiopathic dilated cardiomyopathy. Møller DV, et al. Eur J Heart Fail, 2009 Nov. PMID 19875404.