

**CSTF3 Antibody (monoclonal) (M01)****Mouse monoclonal antibody raised against a full length recombinant CSTF3.****Catalog # AT1663a****Specification**

---

**CSTF3 Antibody (monoclonal) (M01) - Product Information**

Application	WB, IHC, IF, E
Primary Accession	<a href="#">Q12996</a>
Other Accession	<a href="#">BC009792</a>
Reactivity	Human
Host	mouse
Clonality	Monoclonal
Isotype	IgG1 kappa
Calculated MW	82922

**CSTF3 Antibody (monoclonal) (M01) - Additional Information****Gene ID** 1479**Other Names**

Cleavage stimulation factor subunit 3, CF-1 77 kDa subunit, Cleavage stimulation factor 77 kDa subunit, CSTF 77 kDa subunit, CstF-77, CSTF3

**Target/Specificity**

CSTF3 (AAH09792, 1 a.a. ~ 103 a.a) full-length recombinant protein with GST tag. MW of the GST tag alone is 26 KDa.

**Dilution**WB~~1:500~1000  
IHC~~1:100~500  
IF~~1:50~200  
E~~N/A**Format**

Clear, colorless solution in phosphate buffered saline, pH 7.2 .

**Storage**

Store at -20°C or lower. Aliquot to avoid repeated freezing and thawing.

**Precautions**

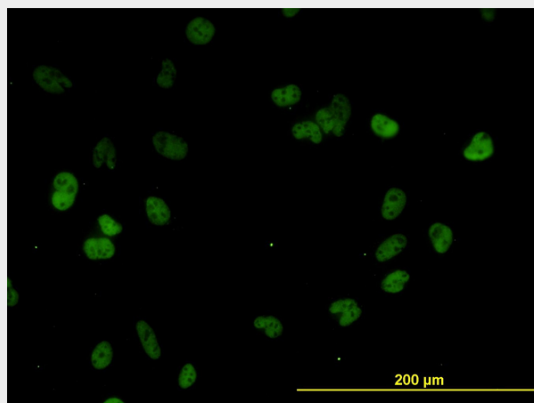
CSTF3 Antibody (monoclonal) (M01) is for research use only and not for use in diagnostic or therapeutic procedures.

**CSTF3 Antibody (monoclonal) (M01) - Protocols**

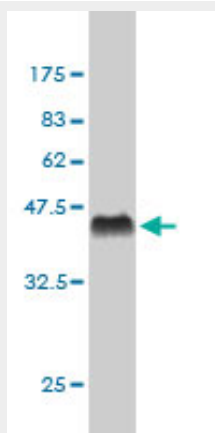
Provided below are standard protocols that you may find useful for product applications.

- [Western Blot](#)
- [Blocking Peptides](#)
- [Dot Blot](#)
- [Immunohistochemistry](#)
- [Immunofluorescence](#)
- [Immunoprecipitation](#)
- [Flow Cytometry](#)
- [Cell Culture](#)

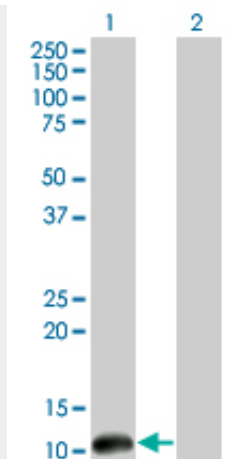
#### **CSTF3 Antibody (monoclonal) (M01) - Images**



Immunofluorescence of monoclonal antibody to CSTF3 on HeLa cell. [antibody concentration 10 ug/ml]



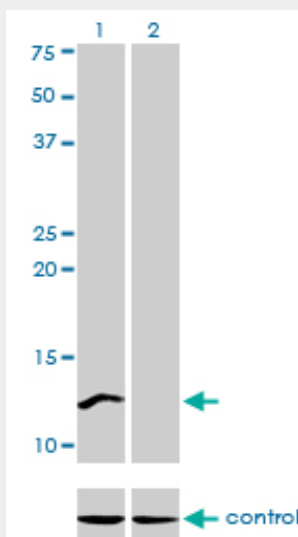
Antibody Reactive Against Recombinant Protein. Western Blot detection against Immunogen (37.07 KDa) .



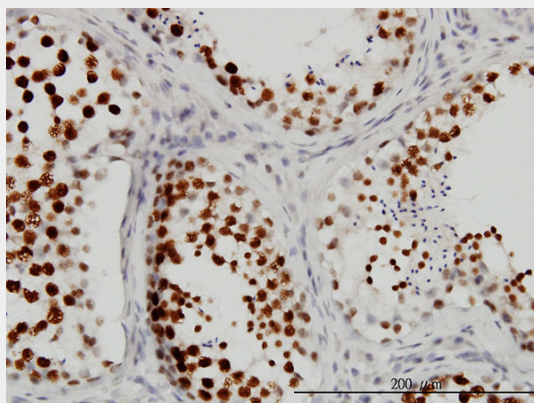
Western Blot analysis of CSTF3 expression in transfected 293T cell line by CSTF3 monoclonal antibody (M01), clone 1D4.

Lane 1: CSTF3 transfected lysate(11.44 KDa).

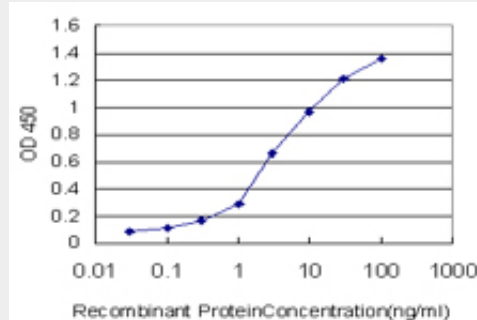
Lane 2: Non-transfected lysate.



Western blot analysis of CSTF3 over-expressed 293 cell line, cotransfected with CSTF3 Validated Chimera RNAi ( Cat # AT1663a )



Immunoperoxidase of monoclonal antibody to CSTF3 on formalin-fixed paraffin-embedded human testis. [antibody concentration 3 ug/ml]



Detection limit for recombinant GST tagged CSTF3 is approximately 0.1ng/ml as a capture antibody.

### **CSTF3 Antibody (monoclonal) (M01) - Background**

The protein encoded by this gene is one of three (including CSTF1 and CSTF2) cleavage stimulation factors that combine to form the cleavage stimulation factor complex (CSTF). This complex is involved in the polyadenylation and 3' end cleavage of pre-mRNAs. The encoded protein functions as a homodimer and interacts directly with both CSTF1 and CSTF2 in the CSTF complex. Alternative splicing results in multiple transcript variants encoding different isoforms.

### **CSTF3 Antibody (monoclonal) (M01) - References**

1. Polyadenylation site-specific differences in the activity of the neuronal CstF-64 protein in PC-12 cells. Shankarling GS, Macdonald CC. Gene. 2013 Oct 25;529(2):220-7.