

CTNND2 Antibody (monoclonal) (M01)**Mouse monoclonal antibody raised against a partial recombinant CTNND2.****Catalog # AT1678a****Specification**

CTNND2 Antibody (monoclonal) (M01) - Product Information

Application	WB
Primary Accession	O9UQB3
Other Accession	NM_001332
Reactivity	Human, Rat
Host	mouse
Clonality	Monoclonal
Isotype	IgG1 Kappa
Calculated MW	132656

CTNND2 Antibody (monoclonal) (M01) - Additional Information**Gene ID** 1501**Other Names**

Catenin delta-2, Delta-catenin, GT24, Neural plakophilin-related ARM-repeat protein, NPRAP, Neurojungin, CTNND2, NPRAP

Target/Specificity

CTNND2 (NP_001323, 1081 a.a. ~ 1190 a.a) partial recombinant protein with GST tag. MW of the GST tag alone is 26 KDa.

Dilution

WB~~1:500~1000

Format

Clear, colorless solution in phosphate buffered saline, pH 7.2 .

Storage

Store at -20°C or lower. Aliquot to avoid repeated freezing and thawing.

Precautions

CTNND2 Antibody (monoclonal) (M01) is for research use only and not for use in diagnostic or therapeutic procedures.

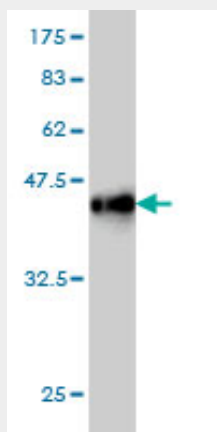
CTNND2 Antibody (monoclonal) (M01) - Protocols

Provided below are standard protocols that you may find useful for product applications.

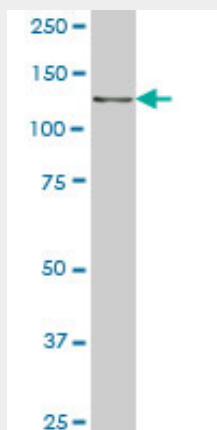
- [Western Blot](#)
- [Blocking Peptides](#)
- [Dot Blot](#)

- [Immunohistochemistry](#)
- [Immunofluorescence](#)
- [Immunoprecipitation](#)
- [Flow Cytometry](#)
- [Cell Culture](#)

CTNND2 Antibody (monoclonal) (M01) - Images



Antibody Reactive Against Recombinant Protein. Western Blot detection against Immunogen (37.84 kDa) .



CTNND2 monoclonal antibody (M01), clone 6E11 Western Blot analysis of CTNND2 expression in PC-12 (Cat # AT1678a)

CTNND2 Antibody (monoclonal) (M01) - Background

This gene encodes an adhesive junction associated protein of the armadillo/beta-catenin superfamily and is implicated in brain and eye development and cancer formation. The protein encoded by this gene promotes the disruption of E-cadherin based adherens junction to favor cell spreading upon stimulation by hepatocyte growth factor. This gene is overexpressed in prostate adenocarcinomas and is associated with decreased expression of tumor suppressor E-cadherin in this tissue. This gene resides in a region of the short arm of chromosome 5 that is deleted in Cri du Chat syndrome.

CTNND2 Antibody (monoclonal) (M01) - References

1. Identification of Novel NPRAP/?-Catenin-Interacting Proteins and the Direct Association of NPRAP with Dynamin 2. Koutras C, Levesque G. PLoS One. 2011;6(10):e25379. Epub 2011 Oct 14.