

CTSD Antibody (monoclonal) (M01)**Mouse monoclonal antibody raised against a full length recombinant CTSD.****Catalog # AT1680a****Specification**

CTSD Antibody (monoclonal) (M01) - Product Information

Application	WB, IHC, IP, E
Primary Accession	P07339
Other Accession	BC016320
Reactivity	Human
Host	mouse
Clonality	Monoclonal
Isotype	IgG1 kappa
Calculated MW	44552

CTSD Antibody (monoclonal) (M01) - Additional Information**Gene ID** 1509**Other Names**

Cathepsin D, Cathepsin D light chain, Cathepsin D heavy chain, CTSD, CPSD

Target/Specificity

CTSD (AAH16320, 26 a.a. ~ 412 a.a) full-length recombinant protein with GST tag. MW of the GST tag alone is 26 KDa.

Dilution

WB~~1:500~1000

IHC~~1:100~500

IP~~N/A

E~~N/A

Format

Clear, colorless solution in phosphate buffered saline, pH 7.2 .

Storage

Store at -20°C or lower. Aliquot to avoid repeated freezing and thawing.

Precautions

CTSD Antibody (monoclonal) (M01) is for research use only and not for use in diagnostic or therapeutic procedures.

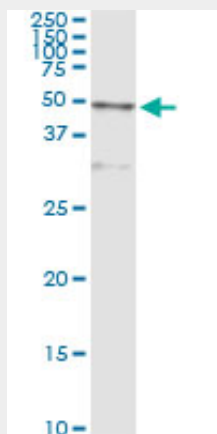
CTSD Antibody (monoclonal) (M01) - Protocols

Provided below are standard protocols that you may find useful for product applications.

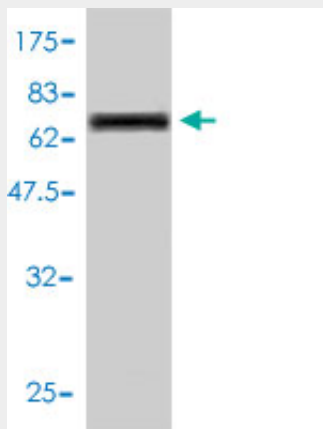
- [Western Blot](#)

- [Blocking Peptides](#)
- [Dot Blot](#)
- [Immunohistochemistry](#)
- [Immunofluorescence](#)
- [Immunoprecipitation](#)
- [Flow Cytometry](#)
- [Cell Culture](#)

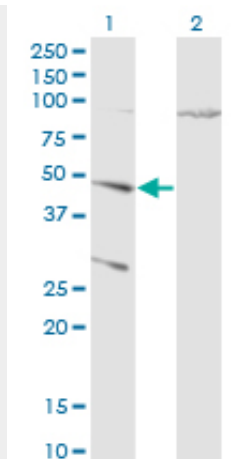
CTSD Antibody (monoclonal) (M01) - Images



Immunoprecipitation of CTSD transfected lysate using anti-CTSD monoclonal antibody and Protein A Magnetic Bead ([U0007](#)), and immunoblotted with CTSD MaxPab rabbit polyclonal antibody.



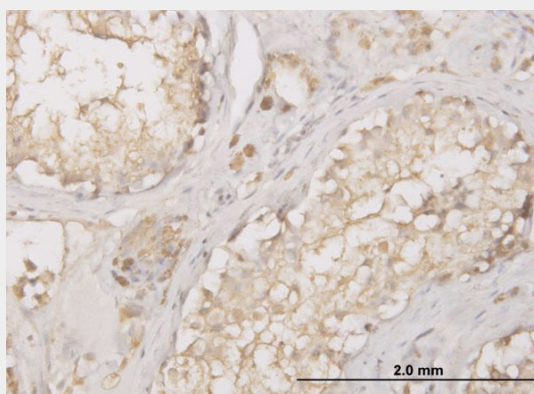
Antibody Reactive Against Recombinant Protein. Western Blot detection against Immunogen (71.06 kDa) .



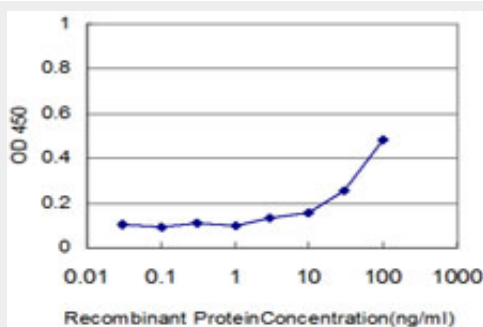
Western Blot analysis of CTSD expression in transfected 293T cell line by CTSD monoclonal antibody (M01), clone 3F12-1B9.

Lane 1: CTSD transfected lysate (Predicted MW: 44.6 kDa).

Lane 2: Non-transfected lysate.



Immunoperoxidase of monoclonal antibody to CTSD on formalin-fixed paraffin-embedded human testis. [antibody concentration 1.5 ug/ml]



Detection limit for recombinant GST tagged CTSD is approximately 3ng/ml as a capture antibody.

CTSD Antibody (monoclonal) (M01) - Background

This gene encodes a lysosomal aspartyl protease composed of a dimer of disulfide-linked heavy and light chains, both produced from a single protein precursor. This proteinase, which is a member of the peptidase C1 family, has a specificity similar to but narrower than that of pepsin A. Transcription of this gene is initiated from several sites, including one which is a start site for an estrogen-regulated transcript. Mutations in this gene are involved in the pathogenesis of several

diseases, including breast cancer and possibly Alzheimer disease.

CTSD Antibody (monoclonal) (M01) - References

1.Characterization of the Human Gastric Fluid Proteome Reveals Distinct pH-Dependent Protein Profiles: Implications for Biomarker Studies.Kam SY, Hennessy T, Chua SC, Gan CS, Philp R, Hon KK, Lai L, Chan WH, Ong HS, Wong WK, Lim KH, Ling KL, Tan HS, Tan MM, Ho M, Kon OL.J Proteome Res. 2011 Aug 15. [Epub ahead of print]