

**CUTL1 Antibody (monoclonal) (M01)****Mouse monoclonal antibody raised against a partial recombinant CUTL1.****Catalog # AT1684a****Specification**

---

**CUTL1 Antibody (monoclonal) (M01) - Product Information**

Application	WB, IHC, IF, IP, E
Primary Accession	<a href="#">Q13948</a>
Other Accession	<a href="#">NM_001913</a>
Reactivity	Human
Host	mouse
Clonality	Monoclonal
Isotype	IgG1 kappa
Calculated MW	77455

**CUTL1 Antibody (monoclonal) (M01) - Additional Information****Gene ID** 1523**Other Names**

Protein CASP, CUX1, CUTL1

**Target/Specificity**

CUTL1 (NP\_001904.2, 521 a.a. ~ 620 a.a) partial recombinant protein with GST tag. MW of the GST tag alone is 26 KDa.

**Dilution**

WB~~1:500~1000

IHC~~1:100~500

IF~~1:50~200

IP~~N/A

E~~N/A

**Format**

Clear, colorless solution in phosphate buffered saline, pH 7.2 .

**Storage**

Store at -20°C or lower. Aliquot to avoid repeated freezing and thawing.

**Precautions**

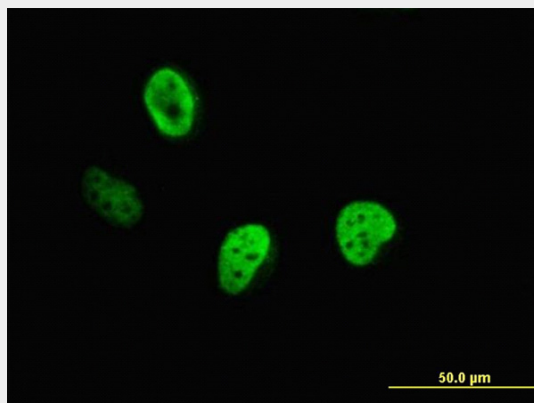
CUTL1 Antibody (monoclonal) (M01) is for research use only and not for use in diagnostic or therapeutic procedures.

**CUTL1 Antibody (monoclonal) (M01) - Protocols**

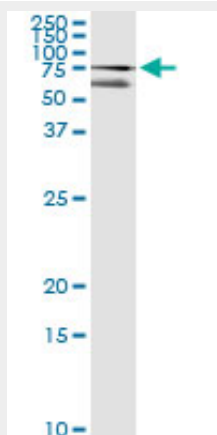
Provided below are standard protocols that you may find useful for product applications.

- [Western Blot](#)
- [Blocking Peptides](#)
- [Dot Blot](#)
- [Immunohistochemistry](#)
- [Immunofluorescence](#)
- [Immunoprecipitation](#)
- [Flow Cytometry](#)
- [Cell Culture](#)

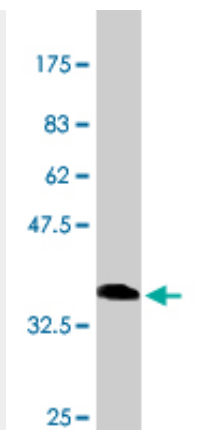
#### CUTL1 Antibody (monoclonal) (M01) - Images



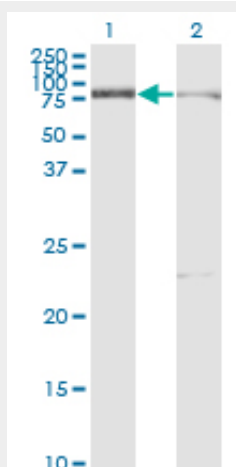
Immunofluorescence of monoclonal antibody to CUTL1 on HeLa cell. [antibody concentration 10 ug/ml]



Immunoprecipitation of CUX1 transfected lysate using anti-CUX1 monoclonal antibody and Protein A Magnetic Bead ([U0007](#)), and immunoblotted with CUX1 MaxPab rabbit polyclonal antibody.



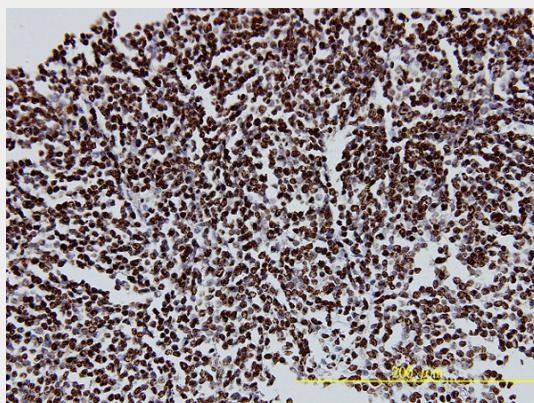
Antibody Reactive Against Recombinant Protein. Western Blot detection against Immunogen (36.63 KDa) .



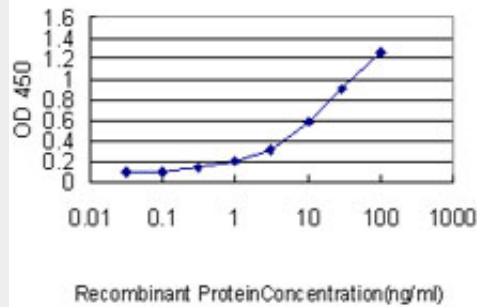
Western Blot analysis of CUX1 expression in transfected 293T cell line by CUTL1 monoclonal antibody (M01), clone 2A10.

Lane 1: CUX1 transfected lysate(77.2 KDa).

Lane 2: Non-transfected lysate.



Immunoperoxidase of monoclonal antibody to CUTL1 on formalin-fixed paraffin-embedded human malignant lymphoma, diffuse large B tissue. [antibody concentration 5 ug/ml]



Detection limit for recombinant GST tagged CUTL1 is approximately 0.03ng/ml as a capture antibody.

### **CUTL1 Antibody (monoclonal) (M01) - Background**

The protein encoded by this gene is a member of the homeodomain family of DNA binding proteins. It may regulate gene expression, morphogenesis, and differentiation and it may also play a role in the cell cycle progression. Several alternatively spliced transcript variants of this gene have been described, but the full-length nature of some of these variants has not been determined.

### **CUTL1 Antibody (monoclonal) (M01) - References**

1. Neocortical Layer Formation of Human Developing Brains and Lissencephalies: Consideration of Layer-Specific Marker Expression. Saito T, Hanai S, Takashima S, Nakagawa E, Okazaki S, Inoue T, Miyata R, Hoshino K, Akashi T, Sasaki M, Goto YI, Hayashi M, Itoh M. Cereb Cortex. 2010 Jul 12. [Epub ahead of print]