

**CUTL1 Antibody (monoclonal) (M02)****Mouse monoclonal antibody raised against a partial recombinant CUTL1.****Catalog # AT1685a****Specification**

---

**CUTL1 Antibody (monoclonal) (M02) - Product Information**

Application	WB, E
Primary Accession	<a href="#">Q13948</a>
Other Accession	<a href="#">NM_001913</a>
Reactivity	Human
Host	mouse
Clonality	Monoclonal
Isotype	IgG1 Kappa
Calculated MW	77455

**CUTL1 Antibody (monoclonal) (M02) - Additional Information****Gene ID** 1523**Other Names**

Protein CASP, CUX1, CUTL1

**Target/Specificity**

CUTL1 (NP\_001904.2, 521 a.a. ~ 620 a.a) partial recombinant protein with GST tag. MW of the GST tag alone is 26 KDa.

**Dilution**

WB~~1:500~1000

E~~N/A

**Format**

Clear, colorless solution in phosphate buffered saline, pH 7.2 .

**Storage**

Store at -20°C or lower. Aliquot to avoid repeated freezing and thawing.

**Precautions**

CUTL1 Antibody (monoclonal) (M02) is for research use only and not for use in diagnostic or therapeutic procedures.

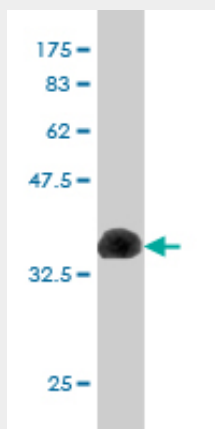
**CUTL1 Antibody (monoclonal) (M02) - Protocols**

Provided below are standard protocols that you may find useful for product applications.

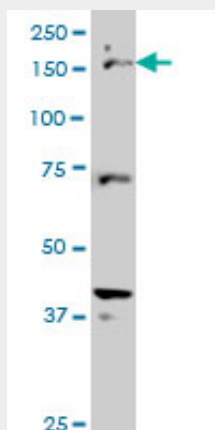
- [Western Blot](#)
- [Blocking Peptides](#)
- [Dot Blot](#)

- [Immunohistochemistry](#)
- [Immunofluorescence](#)
- [Immunoprecipitation](#)
- [Flow Cytometry](#)
- [Cell Culture](#)

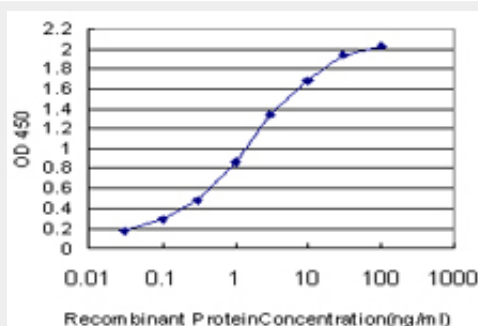
## CUTL1 Antibody (monoclonal) (M02) - Images



Antibody Reactive Against Recombinant Protein. Western Blot detection against Immunogen (36.63 kDa) .



CUTL1 monoclonal antibody (M02), clone 2D10 Western Blot analysis of CUTL1 expression in Hela S3 NE ( (Cat # AT1685a )



Detection limit for recombinant GST tagged CUTL1 is approximately 0.03ng/ml as a capture antibody.

## CUTL1 Antibody (monoclonal) (M02) - Background

The protein encoded by this gene is a member of the homeodomain family of DNA binding proteins. It may regulate gene expression, morphogenesis, and differentiation and it may also play a role in the cell cycle progression. Several alternatively spliced transcript variants of this gene have been described, but the full-length nature of some of these variants has not been determined.

#### **CUTL1 Antibody (monoclonal) (M02) - References**

Personalized smoking cessation: interactions between nicotine dose, dependence and quit-success genotype score. Rose JE, et al. Mol Med, 2010 Jul-Aug. PMID 20379614. New genetic associations detected in a host response study to hepatitis B vaccine. Davila S, et al. Genes Immun, 2010 Apr. PMID 20237496. CDP/cut is an osteoblastic coactivator of the vitamin D receptor (VDR). Ochiai E, et al. J Bone Miner Res, 2010 May. PMID 19888899. p110 CUX1 homeodomain protein stimulates cell migration and invasion in part through a regulatory cascade culminating in the repression of E-cadherin and occludin. Keding V, et al. J Biol Chem, 2009 Oct 2. PMID 19635798. FGFR2 is associated with hair thickness in Asian populations. Fujimoto A, et al. J Hum Genet, 2009 Aug. PMID 19590514.