

CYP1B1 Antibody (monoclonal) (M03)**Mouse monoclonal antibody raised against a partial recombinant CYP1B1.****Catalog # AT1701a****Specification**

CYP1B1 Antibody (monoclonal) (M03) - Product Information

Application	E
Primary Accession	Q16678
Other Accession	NM_000104
Reactivity	Human
Host	mouse
Clonality	Monoclonal
Isotype	IgG2b Kappa
Calculated MW	60846

CYP1B1 Antibody (monoclonal) (M03) - Additional Information**Gene ID** 1545**Other Names**

Cytochrome P450 1B1, CYP1B1, CYP1B1

Target/Specificity

CYP1B1 (NP_000095, 453 a.a. ~ 542 a.a) partial recombinant protein with GST tag. MW of the GST tag alone is 26 KDa.

Dilution

E~~N/A

Format

Clear, colorless solution in phosphate buffered saline, pH 7.2 .

Storage

Store at -20°C or lower. Aliquot to avoid repeated freezing and thawing.

Precautions

CYP1B1 Antibody (monoclonal) (M03) is for research use only and not for use in diagnostic or therapeutic procedures.

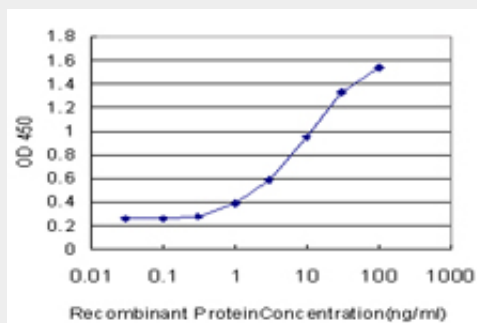
CYP1B1 Antibody (monoclonal) (M03) - Protocols

Provided below are standard protocols that you may find useful for product applications.

- [Western Blot](#)
- [Blocking Peptides](#)
- [Dot Blot](#)
- [Immunohistochemistry](#)

- [Immunofluorescence](#)
- [Immunoprecipitation](#)
- [Flow Cytometry](#)
- [Cell Culture](#)

CYP1B1 Antibody (monoclonal) (M03) - Images



Detection limit for recombinant GST tagged CYP1B1 is approximately 0.3ng/ml as a capture antibody.

CYP1B1 Antibody (monoclonal) (M03) - Background

This gene encodes a member of the cytochrome P450 superfamily of enzymes. The cytochrome P450 proteins are monooxygenases which catalyze many reactions involved in drug metabolism and synthesis of cholesterol, steroids and other lipids. The enzyme encoded by this gene localizes to the endoplasmic reticulum and metabolizes procarcinogens such as polycyclic aromatic hydrocarbons and 17 β -estradiol. Mutations in this gene have been associated with primary congenital glaucoma; therefore it is thought that the enzyme also metabolizes a signaling molecule involved in eye development, possibly a steroid.

CYP1B1 Antibody (monoclonal) (M03) - References

Combined effect of CYP1B1 codon 432 polymorphism and N-acetyltransferase 2 slow acetylator phenotypes in relation to breast cancer in the Turkish population. Ozbek YK, et al. *Anticancer Res*, 2010 Jul. PMID 20683028. Comparison of estrogens and estrogen metabolites in human breast tissue and urine. Taioli E, et al. *Reprod Biol Endocrinol*, 2010 Aug 2. PMID 20678202. A polymorphism in the CYP1B1 promoter is functionally associated with primary congenital glaucoma. Chakrabarti S, et al. *Hum Mol Genet*, 2010 Aug 17. PMID 20660114. Maternal genes and facial clefts in offspring: a comprehensive search for genetic associations in two population-based cleft studies from Scandinavia. Jugessur A, et al. *PLoS One*, 2010 Jul 9. PMID 20634891. Comprehensive analysis of common genetic variation in 61 genes related to steroid hormone and insulin-like growth factor-I metabolism and breast cancer risk in the NCI breast and prostate cancer cohort consortium. Canzian F, et al. *Hum Mol Genet*, 2010 Oct 1. PMID 20634197.