

DDX26 Antibody (monoclonal) (M02)**Mouse monoclonal antibody raised against a partial recombinant DDX26.****Catalog # AT1734a****Specification**

DDX26 Antibody (monoclonal) (M02) - Product Information

Application	IF, WB, IHC, E
Primary Accession	O9UL03
Other Accession	NM_012141
Reactivity	Human
Host	Mouse
Clonality	Monoclonal
Isotype	IgG1 Kappa
Calculated MW	100390

DDX26 Antibody (monoclonal) (M02) - Additional Information**Gene ID** 26512**Other Names**

Integrator complex subunit 6, Int6, DBI-1, Protein DDX26, Protein deleted in cancer 1, DICE1, INTS6, DBI1, DDX26, DDX26A

Target/Specificity

DDX26 (NP_036273, 779 a.a. ~ 887 a.a) partial recombinant protein with GST tag. MW of the GST tag alone is 26 KDa.

Dilution

WB~~1:500~1000

Format

Clear, colorless solution in phosphate buffered saline, pH 7.2 .

Storage

Store at -20°C or lower. Aliquot to avoid repeated freezing and thawing.

Precautions

DDX26 Antibody (monoclonal) (M02) is for research use only and not for use in diagnostic or therapeutic procedures.

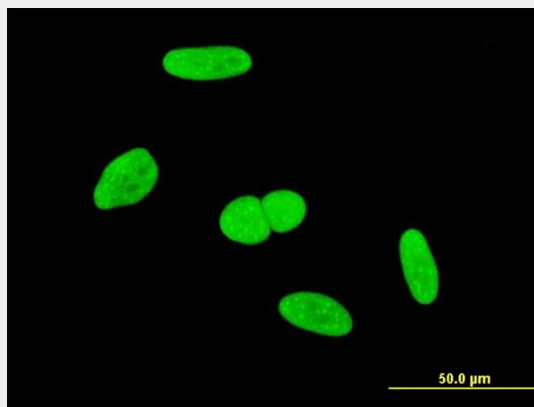
DDX26 Antibody (monoclonal) (M02) - Protocols

Provided below are standard protocols that you may find useful for product applications.

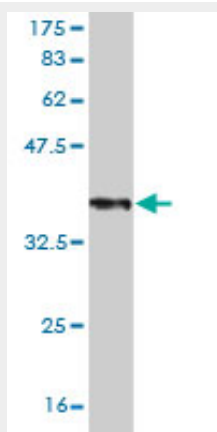
- [Western Blot](#)
- [Blocking Peptides](#)
- [Dot Blot](#)

- [Immunohistochemistry](#)
- [Immunofluorescence](#)
- [Immunoprecipitation](#)
- [Flow Cytometry](#)
- [Cell Culture](#)

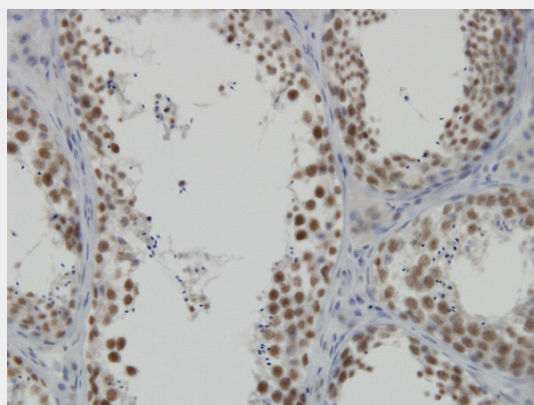
DDX26 Antibody (monoclonal) (M02) - Images



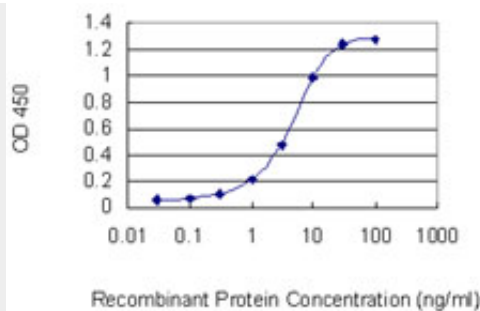
Immunofluorescence of monoclonal antibody to DDX26 on HeLa cell . [antibody concentration 10 ug/ml]



Antibody Reactive Against Recombinant Protein. Western Blot detection against Immunogen (37.73 KDa) .



Immunoperoxidase of monoclonal antibody to DDX26 on formalin-fixed paraffin-embedded human testis. [antibody concentration 3 ug/ml]



Detection limit for recombinant GST tagged INTS6 is 0.1 ng/ml as a capture antibody.

DDX26 Antibody (monoclonal) (M02) - Background

DEAD box proteins, characterized by the conserved motif Asp-Glu-Ala-Asp (DEAD), are putative RNA helicases. The protein encoded by this gene is a DEAD box protein that is part of a complex that interacts with the C-terminus of RNA polymerase II and is involved in 3' end processing of snRNAs. In addition, this gene is a candidate tumor suppressor and located in the critical region of loss of heterozygosity (LOH). Three transcript variants encoding two different isoforms have been found for this gene.

DDX26 Antibody (monoclonal) (M02) - References

Toward a confocal subcellular atlas of the human proteome. Barbe L, et al. Mol Cell Proteomics, 2008 Mar. PMID 18029348. Human INT6 interacts with MCM7 and regulates its stability during S phase of the cell cycle. Buchsbaum S, et al. Oncogene, 2007 Aug 2. PMID 17310990. Absence of mutations in DICE1/DDX26 gene in human cancer cell lines with frequent 13q14 deletions. Hernandez M, et al. Cancer Genet Cytogenet, 2005 Nov. PMID 16271964. Integrator, a multiprotein mediator of small nuclear RNA processing, associates with the C-terminal repeat of RNA polymerase II. Baillat D, et al. Cell, 2005 Oct 21. PMID 16239144. Promoter CpG hypermethylation and downregulation of DICE1 expression in prostate cancer. R?pke A, et al. Oncogene, 2005 Oct 6. PMID 16007164.