

**DDX56 Antibody (monoclonal) (M03)****Mouse monoclonal antibody raised against a partial recombinant DDX56.****Catalog # AT1741a****Specification**

---

**DDX56 Antibody (monoclonal) (M03) - Product Information**

Application	WB
Primary Accession	<a href="#">O9NY93</a>
Other Accession	<a href="#">NM_019082</a>
Reactivity	Human, Mouse, Rat
Host	mouse
Clonality	Monoclonal
Isotype	IgG1 Kappa
Calculated MW	61590

**DDX56 Antibody (monoclonal) (M03) - Additional Information****Gene ID** 54606**Other Names**

Probable ATP-dependent RNA helicase DDX56, ATP-dependent 61 kDa nucleolar RNA helicase, DEAD box protein 21, DEAD box protein 56, DDX56, DDX21, NOH61

**Target/Specificity**

DDX56 (NP\_061955, 450 a.a. ~ 547 a.a) partial recombinant protein with GST tag. MW of the GST tag alone is 26 KDa.

**Dilution**

WB~~1:500~1000

**Format**

Clear, colorless solution in phosphate buffered saline, pH 7.2 .

**Storage**

Store at -20°C or lower. Aliquot to avoid repeated freezing and thawing.

**Precautions**

DDX56 Antibody (monoclonal) (M03) is for research use only and not for use in diagnostic or therapeutic procedures.

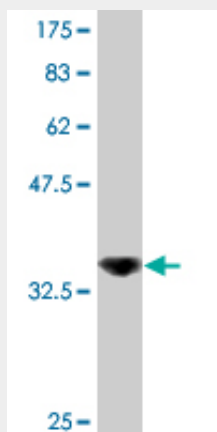
**DDX56 Antibody (monoclonal) (M03) - Protocols**

Provided below are standard protocols that you may find useful for product applications.

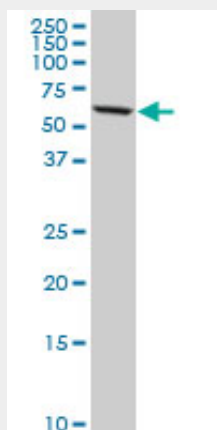
- [Western Blot](#)
- [Blocking Peptides](#)
- [Dot Blot](#)

- [Immunohistochemistry](#)
- [Immunofluorescence](#)
- [Immunoprecipitation](#)
- [Flow Cytometry](#)
- [Cell Culture](#)

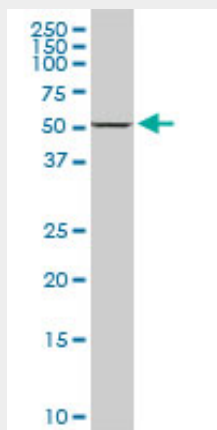
### DDX56 Antibody (monoclonal) (M03) - Images



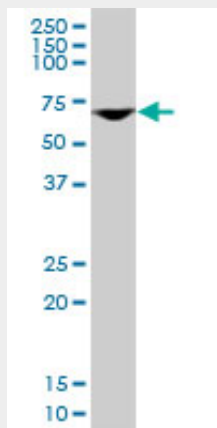
Antibody Reactive Against Recombinant Protein. Western Blot detection against Immunogen (36.52 KDa) .



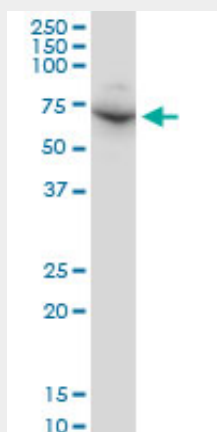
DDX56 monoclonal antibody (M03), clone 6B9. Western Blot analysis of DDX56 expression in HeLa ( (Cat # AT1741a )



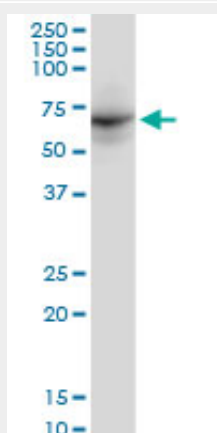
DDX56 monoclonal antibody (M03), clone 6B9. Western Blot analysis of DDX56 expression in PC-12 ( (Cat # AT1741a )



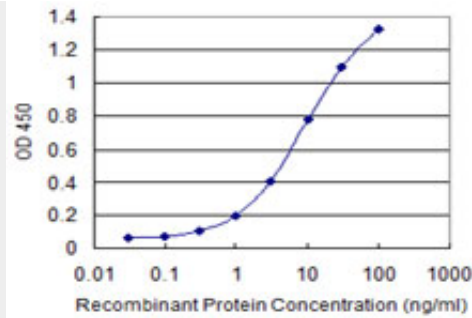
DDX56 monoclonal antibody (M03), clone 6B9. Western Blot analysis of DDX56 expression in HepG2 ( (Cat # AT1741a )



DDX56 monoclonal antibody (M03), clone 6B9. Western Blot analysis of DDX56 expression in Raw 264.7((Cat # AT1741a )



DDX56 monoclonal antibody (M03), clone 6B9. Western Blot analysis of DDX56 expression in NIH/3T3((Cat # AT1741a )



Detection limit for recombinant GST tagged DDX56 is 0.1 ng/ml as a capture antibody.

### **DDX56 Antibody (monoclonal) (M03) - Background**

This gene encodes a member of the DEAD box protein family. DEAD box proteins, characterized by the conserved motif Asp-Glu-Ala-Asp (DEAD), are putative RNA helicases. They are implicated in a number of cellular processes involving alteration of RNA secondary structure such as translation initiation, nuclear and mitochondrial splicing, and ribosome and spliceosome assembly. Based on their distribution patterns, some members of this family are believed to be involved in embryogenesis, spermatogenesis, and cellular growth and division. The protein encoded by this gene shows ATPase activity in the presence of polynucleotides and associates with nucleoplasmic 65S preribosomal particles. This gene may be involved in ribosome synthesis, most likely during assembly of the large 60S ribosomal subunit.

### **DDX56 Antibody (monoclonal) (M03) - References**

1. Quantitative Proteomics and Dynamic Imaging of the Nucleolus Reveal Distinct Responses to UV and Ionizing Radiation. Moore HM, Bai B, Boisvert FM, Latonen L, Rantanen V, Simpson JC, Pepperkok R, Lamond AI, Laiho M. Mol Cell Proteomics. 2011 Oct;10(10):M111.009241. Epub 2011 Jul 21.