

**DIABLO Antibody (monoclonal) (M02)****Mouse monoclonal antibody raised against a partial recombinant DIABLO.****Catalog # AT1763a****Specification**

---

**DIABLO Antibody (monoclonal) (M02) - Product Information**

Application	WB, E
Primary Accession	<a href="#">O9NR28</a>
Other Accession	<a href="#">BC011909</a>
Reactivity	Human
Host	mouse
Clonality	Monoclonal
Isotype	IgG2a Kappa
Calculated MW	27131

**DIABLO Antibody (monoclonal) (M02) - Additional Information****Gene ID** 56616**Other Names**

Diablo homolog, mitochondrial, Direct IAP-binding protein with low pI, Second mitochondria-derived activator of caspase, Smac, DIABLO, SMAC

**Target/Specificity**

DIABLO (AAH11909, 119 a.a. ~ 218 a.a) partial recombinant protein with GST tag. MW of the GST tag alone is 26 KDa.

**Dilution**

WB~~1:500~1000

E~~N/A

**Format**

Clear, colorless solution in phosphate buffered saline, pH 7.2 .

**Storage**

Store at -20°C or lower. Aliquot to avoid repeated freezing and thawing.

**Precautions**

DIABLO Antibody (monoclonal) (M02) is for research use only and not for use in diagnostic or therapeutic procedures.

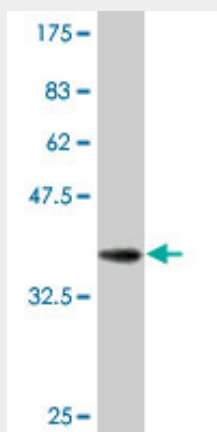
**DIABLO Antibody (monoclonal) (M02) - Protocols**

Provided below are standard protocols that you may find useful for product applications.

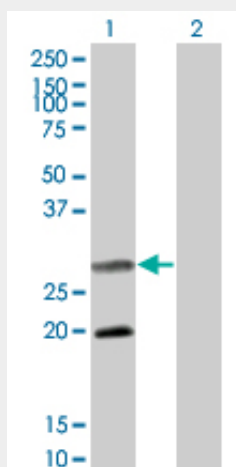
- [Western Blot](#)
- [Blocking Peptides](#)

- [Dot Blot](#)
- [Immunohistochemistry](#)
- [Immunofluorescence](#)
- [Immunoprecipitation](#)
- [Flow Cytometry](#)
- [Cell Culture](#)

#### DIABLO Antibody (monoclonal) (M02) - Images



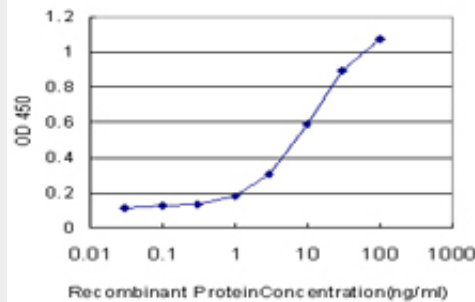
Antibody Reactive Against Recombinant Protein. Western Blot detection against Immunogen (36.63 KDa) .



Western Blot analysis of DIABLO expression in transfected 293T cell line by DIABLO monoclonal antibody (M02), clone 4F9.

Lane 1: DIABLO transfected lysate (27.131 KDa).

Lane 2: Non-transfected lysate.



Detection limit for recombinant GST tagged DIABLO is approximately 0.3ng/ml as a capture antibody.

### **DIABLO Antibody (monoclonal) (M02) - Background**

This gene encodes an inhibitor of apoptosis protein (IAP)-binding protein. The encoded mitochondrial protein enters the cytosol when cells undergo apoptosis, and it moderates the caspase inhibition of IAPs. Multiple polyadenylation sites have been found for this gene. Four alternatively spliced transcript variants have been described for this gene, with two of them encoding different isoforms and the other two probably not encoding a protein.

### **DIABLO Antibody (monoclonal) (M02) - References**

Variation at the NFATC2 Locus Increases the Risk of Thiazolidinedione-Induced Edema in the Diabetes REduction Assessment with ramipril and rosiglitazone Medication (DREAM) Study. Bailey SD, et al. Diabetes Care, 2010 Jul 13. PMID 20628086. Overexpression of Smac/DIABLO in Hep-2 cell line: possible role in potentiating the sensitivity of chemotherapeutic drugs. Lu S, et al. Tumori, 2010 Mar-Apr. PMID 20572591. Hip2 interacts with and destabilizes Smac/DIABLO. Bae Y, et al. Biochem Biophys Res Commun, 2010 Jul 9. PMID 20537984. Survivin and Smac gene expressions but not livin are predictors of prognosis in non-small cell lung cancer patients treated with adjuvant chemotherapy following surgery. Dai CH, et al. Jpn J Clin Oncol, 2010 Apr. PMID 20056675. Gene-centric association signals for lipids and apolipoproteins identified via the HumanCVD BeadChip. Talmud PJ, et al. Am J Hum Genet, 2009 Nov. PMID 19913121.