

DKFZp434B1231 Antibody (monoclonal) (M01)

Mouse monoclonal antibody raised against a partial recombinant DKFZp434B1231.

Catalog # AT1765a

Specification

DKFZp434B1231 Antibody (monoclonal) (M01) - Product Information

Application	IF, WB, E
Primary Accession	Q86VF2
Other Accession	NM_178275
Reactivity	Human
Host	mouse
Clonality	Monoclonal
Isotype	IgG2a Kappa
Calculated MW	137763

DKFZp434B1231 Antibody (monoclonal) (M01) - Additional Information

Gene ID 91156

Other Names

Immunoglobulin-like and fibronectin type III domain-containing protein 1, EEF1A2-binding protein 1, KY-interacting protein 1, IGFN1, EEF1A2BP1, KYIP1

Target/Specificity

DKFZp434B1231 (NP_840059, 720 a.a. ~ 818 a.a) partial recombinant protein with GST tag. MW of the GST tag alone is 26 KDa.

Dilution

WB~~1:500~1000

Format

Clear, colorless solution in phosphate buffered saline, pH 7.2 .

Storage

Store at -20°C or lower. Aliquot to avoid repeated freezing and thawing.

Precautions

DKFZp434B1231 Antibody (monoclonal) (M01) is for research use only and not for use in diagnostic or therapeutic procedures.

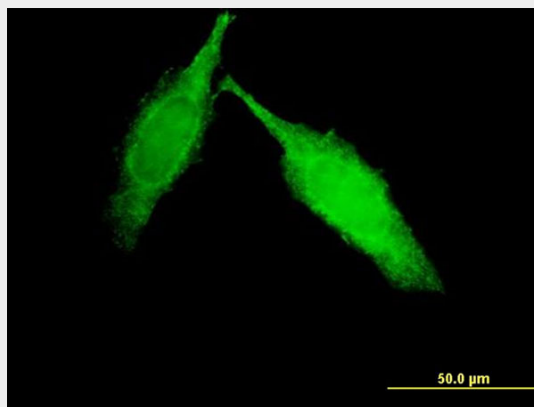
DKFZp434B1231 Antibody (monoclonal) (M01) - Protocols

Provided below are standard protocols that you may find useful for product applications.

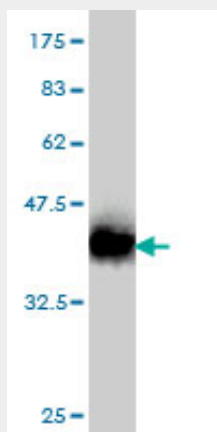
- [Western Blot](#)
- [Blocking Peptides](#)
- [Dot Blot](#)

- [Immunohistochemistry](#)
- [Immunofluorescence](#)
- [Immunoprecipitation](#)
- [Flow Cytometry](#)
- [Cell Culture](#)

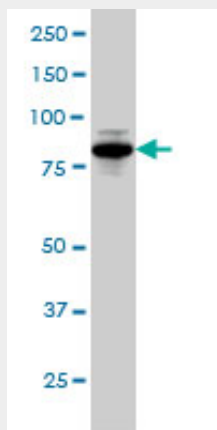
DKFZp434B1231 Antibody (monoclonal) (M01) - Images



Immunofluorescence of monoclonal antibody to DKFZp434B1231 on HeLa cell. [antibody concentration 15 ug/ml]

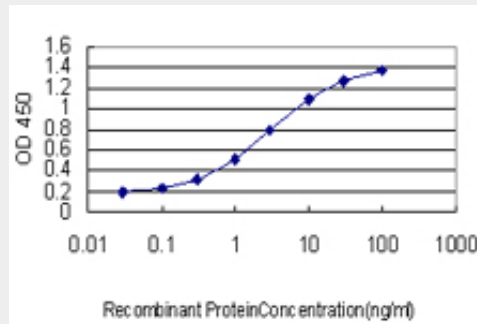


Antibody Reactive Against Recombinant Protein. Western Blot detection against Immunogen (36.63 KDa) .



DKFZp434B1231 monoclonal antibody (M01), clone 5B12 Western Blot analysis of

DKFZp434B1231 expression in A-431 ((Cat # AT1765a)



Detection limit for recombinant GST tagged DKFZp434B1231 is approximately 0.03ng/ml as a capture antibody.

DKFZp434B1231 Antibody (monoclonal) (M01) - References

Personalized smoking cessation: interactions between nicotine dose, dependence and quit-success genotype score. Rose JE, et al. Mol Med, 2010 Jul-Aug. PMID 20379614. Translation elongation factor eEF1A binds to a novel myosin binding protein-C-like protein. Mansilla F, et al. J Cell Biochem, 2008 Oct 15. PMID 18756455. Filamin C interacts with the muscular dystrophy KY protein and is abnormally distributed in mouse KY deficient muscle fibres. Beatham J, et al. Hum Mol Genet, 2004 Nov 15. PMID 15385448. Generation and initial analysis of more than 15,000 full-length human and mouse cDNA sequences. Strausberg RL, et al. Proc Natl Acad Sci U S A, 2002 Dec 24. PMID 12477932.