

DLD Antibody (monoclonal) (M02)**Mouse monoclonal antibody raised against a full length recombinant DLD.****Catalog # AT1770a****Specification**

DLD Antibody (monoclonal) (M02) - Product Information

Application	WB, IHC, E
Primary Accession	P09622
Other Accession	BC018696
Reactivity	Human
Host	mouse
Clonality	Monoclonal
Isotype	IgG3 Kappa
Calculated MW	54177

DLD Antibody (monoclonal) (M02) - Additional Information**Gene ID** 1738**Other Names**

Dihydrolipoyl dehydrogenase, mitochondrial, Dihydrolipoamide dehydrogenase, Glycine cleavage system L protein, DLD, GCSL, LAD, PHE3

Target/Specificity

DLD (AAH18696, 1 a.a. ~ 509 a.a) full-length recombinant protein with GST tag. MW of the GST tag alone is 26 KDa.

Dilution

WB~~1:500~1000

IHC~~1:100~500

E~~N/A

Format

Clear, colorless solution in phosphate buffered saline, pH 7.2 .

Storage

Store at -20°C or lower. Aliquot to avoid repeated freezing and thawing.

Precautions

DLD Antibody (monoclonal) (M02) is for research use only and not for use in diagnostic or therapeutic procedures.

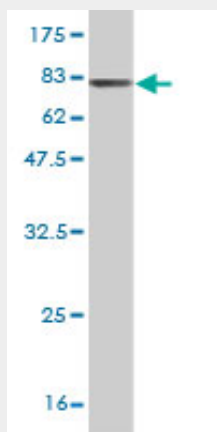
DLD Antibody (monoclonal) (M02) - Protocols

Provided below are standard protocols that you may find useful for product applications.

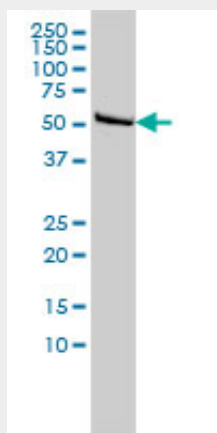
- [Western Blot](#)

- [Blocking Peptides](#)
- [Dot Blot](#)
- [Immunohistochemistry](#)
- [Immunofluorescence](#)
- [Immunoprecipitation](#)
- [Flow Cytometry](#)
- [Cell Culture](#)

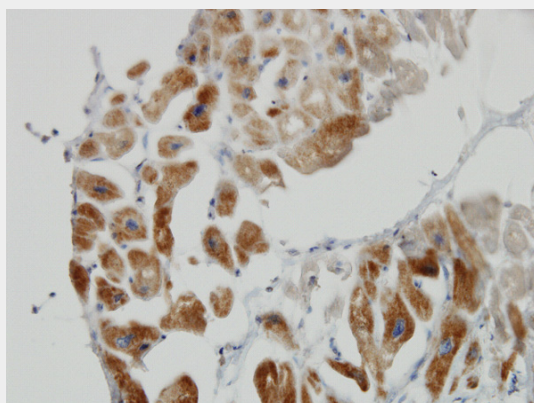
DLD Antibody (monoclonal) (M02) - Images



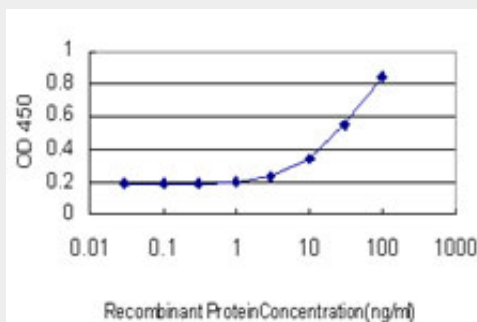
Antibody Reactive Against Recombinant Protein. Western Blot detection against Immunogen (81.73 KDa) .



DLD monoclonal antibody (M02), clone 3C1 Western Blot analysis of DLD expression in Hela (Cat # AT1770a)



Immunoperoxidase of monoclonal antibody to DLD on formalin-fixed paraffin-embedded human heart. [antibody concentration 3 ug/ml]



Detection limit for recombinant GST tagged DLD is approximately 1ng/ml as a capture antibody.

DLD Antibody (monoclonal) (M02) - Background

This gene encodes the L protein of the mitochondrial glycine cleavage system. The L protein, also named dihydrolipoamide dehydrogenase, is also a component of the pyruvate dehydrogenase complex, the alpha-ketoglutarate dehydrogenase complex, and the branched-chain alpha-keto acid dehydrogenase complex. Mutations in this gene have been identified in patients with E3-deficient maple syrup urine disease and lipoamide dehydrogenase deficiency.

DLD Antibody (monoclonal) (M02) - References

1. Quantitative Analysis of HIV-1 Infected CD4+ Cell Proteome: Dysregulated Cell Cycle Progression and Nuclear Transport Coincide with Robust Virus Production. Chan EY, Qian WJ, Diamond DL, Liu T, Gritsenko MA, Monroe ME, Camp DG 2nd, Smith RD, Katze MG. J Virol. 2007 Jul;81(14):7571-83. Epub 2007 May 9.