

DLX1 Antibody (monoclonal) (M01)**Mouse monoclonal antibody raised against a partial recombinant DLX1.****Catalog # AT1774a****Specification**

DLX1 Antibody (monoclonal) (M01) - Product Information

Application	WB, IF, IP, E
Primary Accession	P56177
Other Accession	NM_178120
Reactivity	Human
Host	mouse
Clonality	Monoclonal
Isotype	IgG2a Kappa
Calculated MW	27320

DLX1 Antibody (monoclonal) (M01) - Additional Information**Gene ID** 1745**Other Names**

Homeobox protein DLX-1, DLX1

Target/Specificity

DLX1 (NP_835221, 152 a.a. ~ 255 a.a) partial recombinant protein with GST tag. MW of the GST tag alone is 26 KDa.

Dilution

WB~~1:500~1000

IF~~1:50~200

IP~~N/A

E~~N/A

Format

Clear, colorless solution in phosphate buffered saline, pH 7.2 .

Storage

Store at -20°C or lower. Aliquot to avoid repeated freezing and thawing.

Precautions

DLX1 Antibody (monoclonal) (M01) is for research use only and not for use in diagnostic or therapeutic procedures.

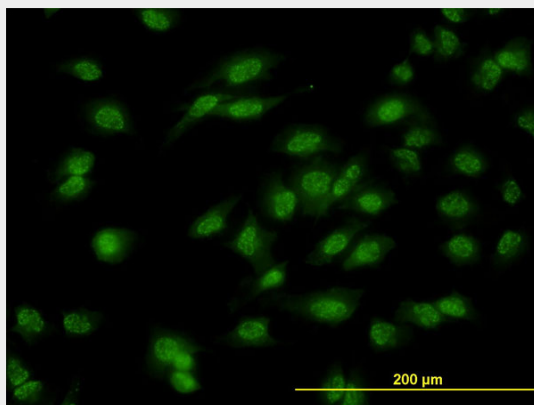
DLX1 Antibody (monoclonal) (M01) - Protocols

Provided below are standard protocols that you may find useful for product applications.

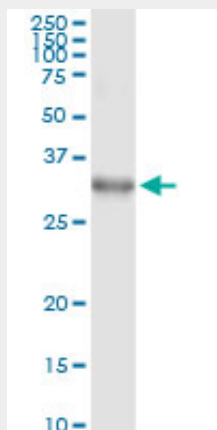
- [Western Blot](#)

- [Blocking Peptides](#)
- [Dot Blot](#)
- [Immunohistochemistry](#)
- [Immunofluorescence](#)
- [Immunoprecipitation](#)
- [Flow Cytometry](#)
- [Cell Culture](#)

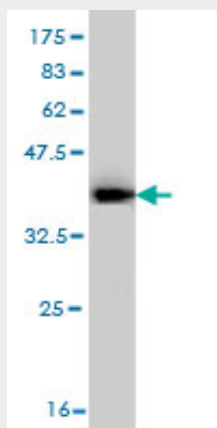
DLX1 Antibody (monoclonal) (M01) - Images



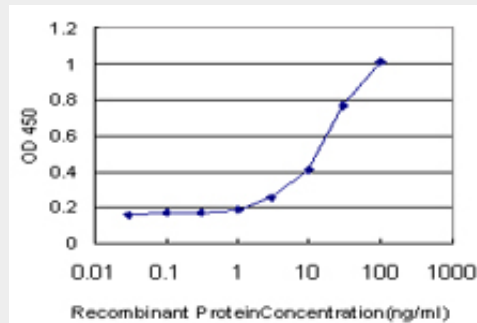
Immunofluorescence of monoclonal antibody to DLX1 on HeLa cell. [antibody concentration 10 ug/ml]



Immunoprecipitation of DLX1 transfected lysate using anti-DLX1 monoclonal antibody and Protein A Magnetic Bead ([U0007](#)), and immunoblotted with DLX1 MaxPab rabbit polyclonal antibody.



Antibody Reactive Against Recombinant Protein. Western Blot detection against Immunogen (37.55 KDa) .



Detection limit for recombinant GST tagged DLX1 is approximately 1ng/ml as a capture antibody.

DLX1 Antibody (monoclonal) (M01) - Background

This gene encodes a member of a homeobox transcription factor gene family similar to the *Drosophila* distal-less gene. The encoded protein is localized to the nucleus where it may function as a transcriptional regulator of signals from multiple TGF- β superfamily members. The encoded protein may play a role in the control of craniofacial patterning and the differentiation and survival of inhibitory neurons in the forebrain. This gene is located in a tail-to-tail configuration with another member of the family on the long arm of chromosome 2. Alternatively spliced transcript variants encoding different isoforms have been described.

DLX1 Antibody (monoclonal) (M01) - References

1. Upregulation of homeodomain genes, DLX1/2, by FLT3 signaling. Starkova J, Gadgil S, Qiu YH, Zhang N, Hermanova I, Kornblau SM, Drabkin HA. *Haematologica*. 2011 Feb 28. [Epub ahead of print]