

**DLX4 Antibody (monoclonal) (M01)****Mouse monoclonal antibody raised against a partial recombinant DLX4.****Catalog # AT1780a****Specification**

---

**DLX4 Antibody (monoclonal) (M01) - Product Information**

Application	WB, IP, E
Primary Accession	<a href="#">O92988</a>
Other Accession	<a href="#">BC016145</a>
Reactivity	Human
Host	mouse
Clonality	Monoclonal
Isotype	IgG2a Kappa
Calculated MW	26263

**DLX4 Antibody (monoclonal) (M01) - Additional Information****Gene ID** 1748**Other Names**

Homeobox protein DLX-4, Beta protein 1, Homeobox protein DLX-7, Homeobox protein DLX-8, DLX4, BP1, DLX7, DLX8, DLX9

**Target/Specificity**

DLX4 (AAH16145, 1 a.a. ~ 98 a.a) partial recombinant protein with GST tag. MW of the GST tag alone is 26 KDa.

**Dilution**

WB~~1:500~1000

IP~~N/A

E~~N/A

**Format**

Clear, colorless solution in phosphate buffered saline, pH 7.2 .

**Storage**

Store at -20°C or lower. Aliquot to avoid repeated freezing and thawing.

**Precautions**

DLX4 Antibody (monoclonal) (M01) is for research use only and not for use in diagnostic or therapeutic procedures.

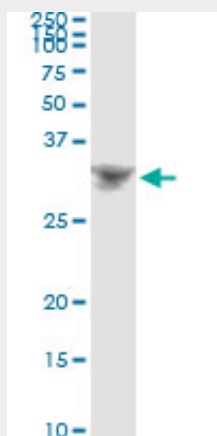
**DLX4 Antibody (monoclonal) (M01) - Protocols**

Provided below are standard protocols that you may find useful for product applications.

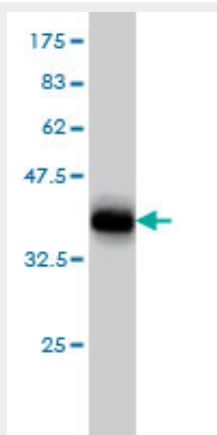
- [Western Blot](#)

- [Blocking Peptides](#)
- [Dot Blot](#)
- [Immunohistochemistry](#)
- [Immunofluorescence](#)
- [Immunoprecipitation](#)
- [Flow Cytometry](#)
- [Cell Culture](#)

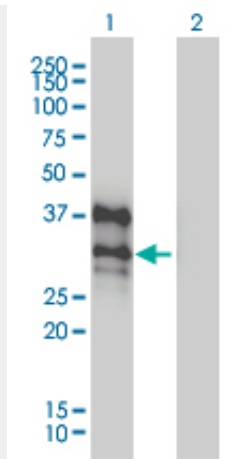
#### DLX4 Antibody (monoclonal) (M01) - Images



Immunoprecipitation of DLX4 transfected lysate using anti-DLX4 monoclonal antibody and Protein A Magnetic Bead ([U0007](#)), and immunoblotted with DLX4 MaxPab rabbit polyclonal antibody.



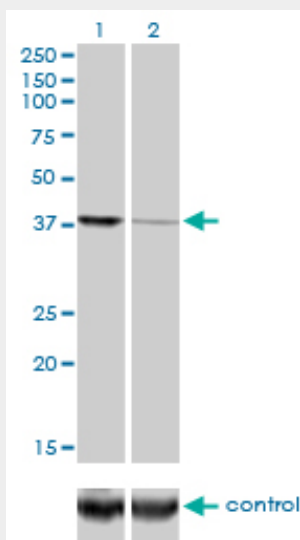
Antibody Reactive Against Recombinant Protein. Western Blot detection against Immunogen (36.52 kDa) .



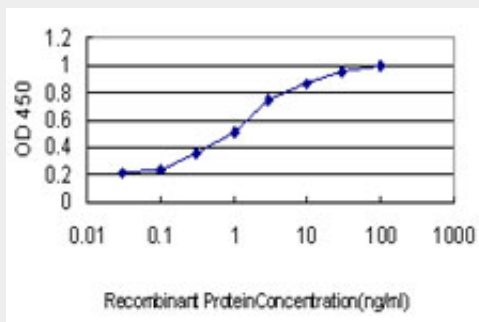
Western Blot analysis of DLX4 expression in transfected 293T cell line by DLX4 monoclonal antibody (M01), clone 1F11.

Lane 1: DLX4 transfected lysate(26 KDa).

Lane 2: Non-transfected lysate.



Western blot analysis of DLX4 over-expressed 293 cell line, cotransfected with DLX4 Validated Chimera RNAi (Cat # AT1780a)



Detection limit for recombinant GST tagged DLX4 is approximately 0.03ng/ml as a capture antibody.

#### DLX4 Antibody (monoclonal) (M01) - Background

Many vertebrate homeo box-containing genes have been identified on the basis of their sequence similarity with *Drosophila* developmental genes. Members of the *Dlx* gene family contain a homeobox that is related to that of *Distal-less* (*Dll*), a gene expressed in the head and limbs of the developing fruit fly. The *Distal-less* (*Dlx*) family of genes comprises at least 6 different members, *DLX1-DLX6*. The *DLX* proteins are postulated to play a role in forebrain and craniofacial development. Three transcript variants have been described for this gene, however, the full length nature of one variant has not been described. Studies of the two splice variants revealed that one encoded isoform functions as a repressor of the beta-globin gene while the other isoform lacks that function.

#### **DLX4 Antibody (monoclonal) (M01) - References**

1.Homeodomain protein DLX4 counteracts key transcriptional control mechanisms of the TGF- $\beta$ 1 cytotstatic program and blocks the antiproliferative effect of TGF- $\beta$ 1.Trinh BQ, Barengo N, Naora H.Oncogene. 2011 Feb 7. [Epub ahead of print]2.A homeobox gene related to *Drosophila* distal-less promotes ovarian tumorigenicity by inducing expression of vascular endothelial growth factor and fibroblast growth factor-2.Hara F, Samuel S, Liu J, Rosen D, Langley RR, Naora H.Am J Pathol. 2007 May;170(5):1594-606.