

**DPF2 Antibody (monoclonal) (M01)****Mouse monoclonal antibody raised against a partial recombinant DPF2.****Catalog # AT1811a****Specification**

---

**DPF2 Antibody (monoclonal) (M01) - Product Information**

Application	WB, IHC, IF
Primary Accession	<a href="#">Q92785</a>
Other Accession	<a href="#">BC014889</a>
Reactivity	Human
Host	mouse
Clonality	Monoclonal
Isotype	IgG2a kappa
Calculated MW	44155

**DPF2 Antibody (monoclonal) (M01) - Additional Information****Gene ID** 5977**Other Names**

Zinc finger protein ubi-d4, Apoptosis response zinc finger protein, BRG1-associated factor 45D, BAF45D, D4, zinc and double PHD fingers family 2, Protein requiem, DPF2, BAF45D, REQ, UBID4

**Target/Specificity**

DPF2 (AAH14889, 56 a.a. ~ 155 a.a) partial recombinant protein with GST tag. MW of the GST tag alone is 26 KDa.

**Dilution**

WB~~1:500~1000

IHC~~1:100~500

IF~~1:50~200

**Format**

Clear, colorless solution in phosphate buffered saline, pH 7.2 .

**Storage**

Store at -20°C or lower. Aliquot to avoid repeated freezing and thawing.

**Precautions**

DPF2 Antibody (monoclonal) (M01) is for research use only and not for use in diagnostic or therapeutic procedures.

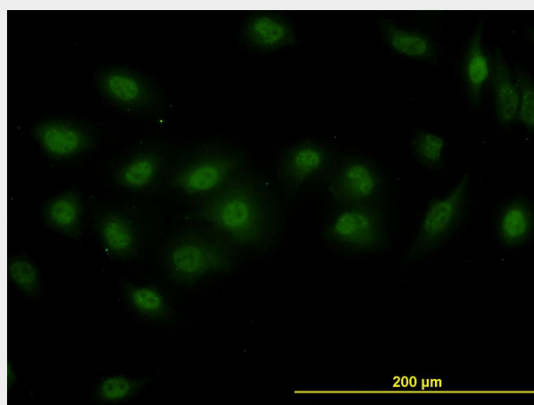
**DPF2 Antibody (monoclonal) (M01) - Protocols**

Provided below are standard protocols that you may find useful for product applications.

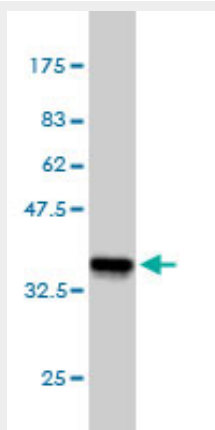
- [Western Blot](#)

- [Blocking Peptides](#)
- [Dot Blot](#)
- [Immunohistochemistry](#)
- [Immunofluorescence](#)
- [Immunoprecipitation](#)
- [Flow Cytometry](#)
- [Cell Culture](#)

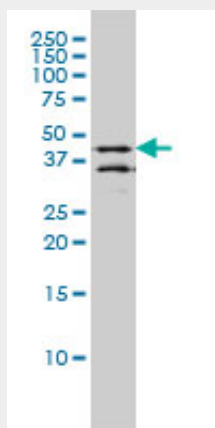
## DPF2 Antibody (monoclonal) (M01) - Images



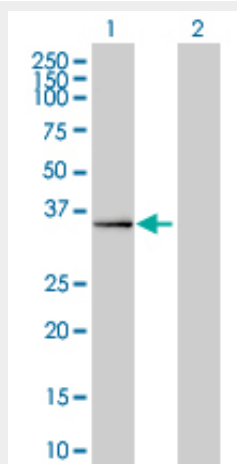
Immunofluorescence of monoclonal antibody to DPF2 on HeLa cell. [antibody concentration 10 ug/ml]



Antibody Reactive Against Recombinant Protein. Western Blot detection against Immunogen (36.63 KDa) .



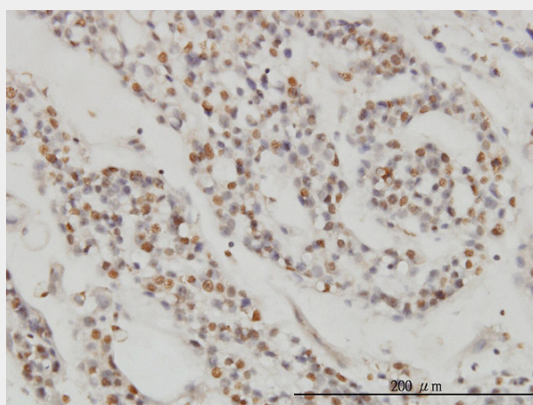
DPF2 monoclonal antibody (M01), clone 2F6 Western Blot analysis of DPF2 expression in LNCaP (Cat # AT1811a )



Western Blot analysis of DPF2 expression in transfected 293T cell line by DPF2 monoclonal antibody (M01), clone 2F6.

Lane 1: DPF2 transfected lysate(44 KDa).

Lane 2: Non-transfected lysate.



Immunoperoxidase of monoclonal antibody to DPF2 on formalin-fixed paraffin-embedded human ovary, clear cell carcinoma. [antibody concentration 6 ug/ml]

#### **DPF2 Antibody (monoclonal) (M01) - Background**

The protein encoded by this gene is a member of the d4 domain family, characterized by a zinc finger-like structural motif. This protein functions as a transcription factor which is necessary for the apoptotic response following deprivation of survival factors. It likely serves a regulatory role in rapid hematopoietic cell growth and turnover. This gene is considered a candidate gene for multiple endocrine neoplasia type I, an inherited cancer syndrome involving multiple parathyroid, enteropancreatic, and pituitary tumors.

#### **DPF2 Antibody (monoclonal) (M01) - References**

1. Transient and etiology-related transcription regulation in cirrhosis prior to hepatocellular carcinoma occurrence. Caillot F, Derambure C, Bioulac-Sage P, Francois A, Scotte M, Gorla O, Hiron M, Daveau M, Salier JP. World J Gastroenterol. 2009 Jan 21;15(3):300-9.