

**E2F4 Antibody (monoclonal) (M01)****Mouse monoclonal antibody raised against a partial recombinant E2F4.****Catalog # AT1836a****Specification**

---

**E2F4 Antibody (monoclonal) (M01) - Product Information**

Application	WB, E
Primary Accession	<a href="#">Q16254</a>
Other Accession	<a href="#">NM_001950</a>
Reactivity	Human
Host	mouse
Clonality	Monoclonal
Isotype	IgG1 Kappa
Calculated MW	43960

**E2F4 Antibody (monoclonal) (M01) - Additional Information****Gene ID** 1874**Other Names**

Transcription factor E2F4, E2F-4, E2F4

**Target/Specificity**

E2F4 (NP\_001941, 211 a.a. ~ 301 a.a) partial recombinant protein with GST tag. MW of the GST tag alone is 26 KDa.

**Dilution**

WB~~1:500~1000

E~~N/A

**Format**

Clear, colorless solution in phosphate buffered saline, pH 7.2 .

**Storage**

Store at -20°C or lower. Aliquot to avoid repeated freezing and thawing.

**Precautions**

E2F4 Antibody (monoclonal) (M01) is for research use only and not for use in diagnostic or therapeutic procedures.

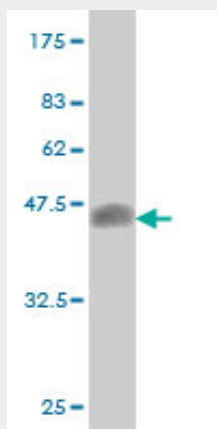
**E2F4 Antibody (monoclonal) (M01) - Protocols**

Provided below are standard protocols that you may find useful for product applications.

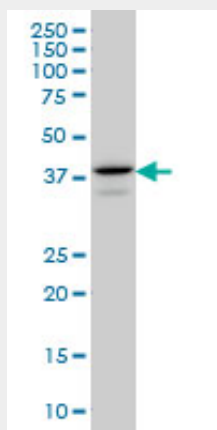
- [Western Blot](#)
- [Blocking Peptides](#)
- [Dot Blot](#)

- [Immunohistochemistry](#)
- [Immunofluorescence](#)
- [Immunoprecipitation](#)
- [Flow Cytometry](#)
- [Cell Culture](#)

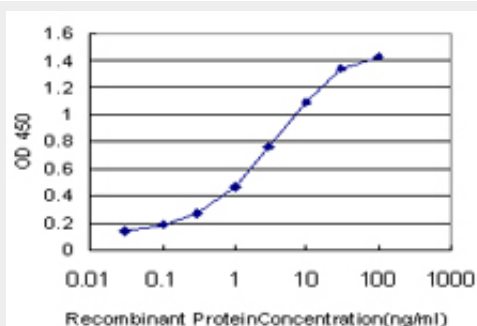
## E2F4 Antibody (monoclonal) (M01) - Images



Antibody Reactive Against Recombinant Protein. Western Blot detection against Immunogen (36.01 kDa) .



E2F4 monoclonal antibody (M01), clone 5B7 Western Blot analysis of E2F4 expression in A-549 (Cat # AT1836a )



Detection limit for recombinant GST tagged E2F4 is approximately 0.03ng/ml as a capture antibody.

## E2F4 Antibody (monoclonal) (M01) - Background

The protein encoded by this gene is a member of the E2F family of transcription factors. The E2F family plays a crucial role in the control of cell cycle and action of tumor suppressor proteins and is also a target of the transforming proteins of small DNA tumor viruses. The E2F proteins contain several evolutionally conserved domains found in most members of the family. These domains include a DNA binding domain, a dimerization domain which determines interaction with the differentiation regulated transcription factor proteins (DP), a transactivation domain enriched in acidic amino acids, and a tumor suppressor protein association domain which is embedded within the transactivation domain. This protein binds to all three of the tumor suppressor proteins pRB, p107 and p130, but with higher affinity to the last two. It plays an important role in the suppression of proliferation-associated genes, and its gene mutation and increased expression may be associated with human cancer.

#### **E2F4 Antibody (monoclonal) (M01) - References**

E2F4 is required for cardiomyocyte proliferation. van Amerongen MJ, et al. Cardiovasc Res, 2010 Apr 1. PMID 19955219. Cell cycle genes and ovarian cancer susceptibility: a tagSNP analysis. Cunningham JM, et al. Br J Cancer, 2009 Oct 20. PMID 19738611. E2F4 expression is required for cell cycle progression of normal intestinal crypt cells and colorectal cancer cells. Garneau H, et al. J Cell Physiol, 2009 Nov. PMID 19562678. Identification of genes associated with non-small-cell lung cancer promotion and progression. Bankovic J, et al. Lung Cancer, 2010 Feb. PMID 19473719. Multiple genetic variants along candidate pathways influence plasma high-density lipoprotein cholesterol concentrations. Lu Y, et al. J Lipid Res, 2008 Dec. PMID 18660489.