

EEF1B2 Antibody (monoclonal) (M10)

Mouse monoclonal antibody raised against a partial recombinant EEF1B2.

Catalog # AT1855a

Specification

EEF1B2 Antibody (monoclonal) (M10) - Product Information

Application	WB
Primary Accession	P24534
Other Accession	NM_001959.3
Reactivity	Human
Host	mouse
Clonality	Monoclonal
Isotype	IgG2a Kappa
Calculated MW	24764

EEF1B2 Antibody (monoclonal) (M10) - Additional Information

Gene ID 1933

Other Names

Elongation factor 1-beta, EF-1-beta, EEF1B2, EEF1B, EF1B

Target/Specificity

EEF1B2 (NP_001950.1, 29 a.a. ~ 91 a.a) partial recombinant protein with GST tag. MW of the GST tag alone is 26 KDa.

Dilution

WB ~ 1:500 ~ 1000

Format

Clear, colorless solution in phosphate buffered saline, pH 7.2 .

Storage

Store at -20°C or lower. Aliquot to avoid repeated freezing and thawing.

Precautions

EEF1B2 Antibody (monoclonal) (M10) is for research use only and not for use in diagnostic or therapeutic procedures.

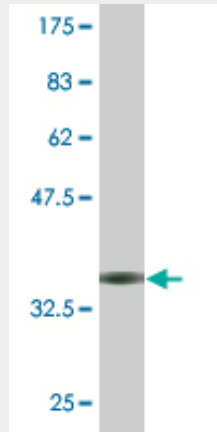
EEF1B2 Antibody (monoclonal) (M10) - Protocols

Provided below are standard protocols that you may find useful for product applications.

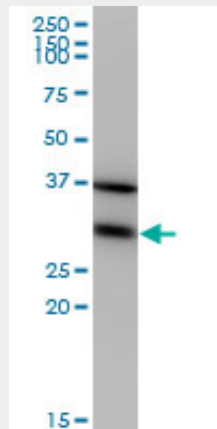
- [Western Blot](#)
- [Blocking Peptides](#)
- [Dot Blot](#)
- [Immunohistochemistry](#)

- [Immunofluorescence](#)
- [Immunoprecipitation](#)
- [Flow Cytometry](#)
- [Cell Culture](#)

EEF1B2 Antibody (monoclonal) (M10) - Images



Antibody Reactive Against Recombinant Protein. Western Blot detection against Immunogen (32.56 KDa) .



EEF1B2 monoclonal antibody (M10), clone 3A5. Western Blot analysis of EEF1B2 expression in HeLa ((Cat # AT1855a)

EEF1B2 Antibody (monoclonal) (M10) - Background

This gene encodes a translation elongation factor. The protein is a guanine nucleotide exchange factor involved in the transfer of aminoacylated tRNAs to the ribosome. Alternative splicing results in three transcript variants which differ only in the 5' UTR. [provided by RefSeq]