

**EEF1D Antibody (monoclonal) (M04)****Mouse monoclonal antibody raised against a partial recombinant EEF1D.****Catalog # AT1856a****Specification**

---

**EEF1D Antibody (monoclonal) (M04) - Product Information**

Application	WB, IF, E
Primary Accession	<a href="#">P29692</a>
Other Accession	<a href="#">NM_032378</a>
Reactivity	Human
Host	mouse
Clonality	Monoclonal
Isotype	IgG2a Kappa
Calculated MW	31122

**EEF1D Antibody (monoclonal) (M04) - Additional Information****Gene ID** 1936**Other Names**

Elongation factor 1-delta, EF-1-delta, Antigen NY-CO-4, EEF1D, EF1D

**Target/Specificity**

EEF1D (NP\_115754, 1 a.a. ~ 91 a.a) partial recombinant protein with GST tag. MW of the GST tag alone is 26 KDa.

**Dilution**

WB~~1:500~1000

IF~~1:50~200

E~~N/A

**Format**

Clear, colorless solution in phosphate buffered saline, pH 7.2 .

**Storage**

Store at -20°C or lower. Aliquot to avoid repeated freezing and thawing.

**Precautions**

EEF1D Antibody (monoclonal) (M04) is for research use only and not for use in diagnostic or therapeutic procedures.

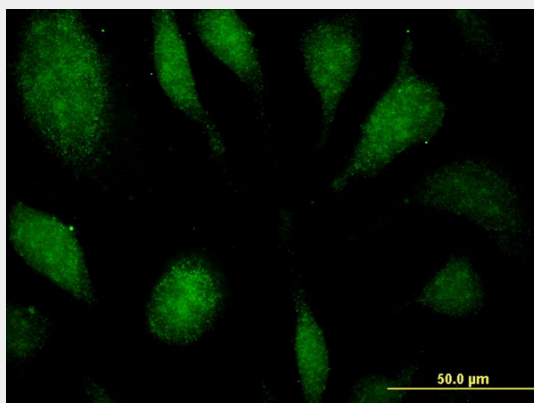
**EEF1D Antibody (monoclonal) (M04) - Protocols**

Provided below are standard protocols that you may find useful for product applications.

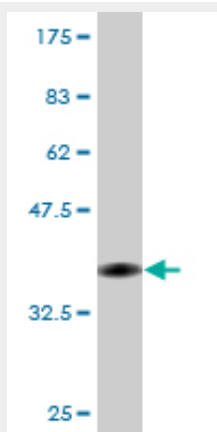
- [Western Blot](#)
- [Blocking Peptides](#)

- [Dot Blot](#)
- [Immunohistochemistry](#)
- [Immunofluorescence](#)
- [Immunoprecipitation](#)
- [Flow Cytometry](#)
- [Cell Culture](#)

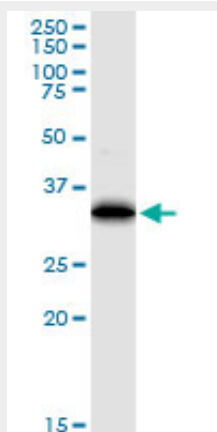
#### EEF1D Antibody (monoclonal) (M04) - Images



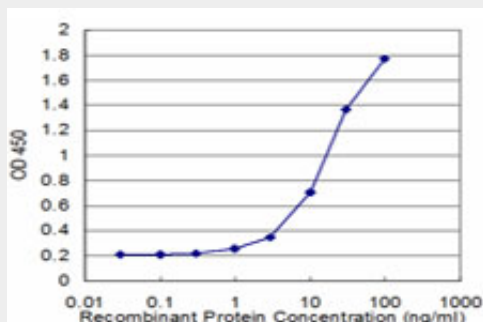
Immunofluorescence of monoclonal antibody to EEF1D on HeLa cell . [antibody concentration 10 ug/ml]



Antibody Reactive Against Recombinant Protein. Western Blot detection against Immunogen (35.75 KDa) .



EEF1D monoclonal antibody (M04), clone 4B12. Western Blot analysis of EEF1D expression in human pancreas.



Detection limit for recombinant GST tagged EEF1D is approximately 1ng/ml as a capture antibody.

### EEF1D Antibody (monoclonal) (M04) - Background

This gene encodes a subunit of the elongation factor-1 complex, which is responsible for the enzymatic delivery of aminoacyl tRNAs to the ribosome. This subunit, delta, functions as guanine nucleotide exchange factor. It is reported that following HIV-1 infection, this subunit interacts with HIV-1 Tat. This interaction results in repression of translation of host cell proteins and enhanced translation of viral proteins. Several alternatively spliced transcript variants encoding multiple isoforms have been found for this gene. Related pseudogenes have been defined on chromosomes 1, 6, 7, 9, 11, 13, 17, 19.

### EEF1D Antibody (monoclonal) (M04) - References

Alternative expression and sequence of human elongation factor-1 delta during malignant transformation of human bronchial epithelial cells induced by cadmium chloride. Lei YX, et al. Biomed Environ Sci, 2010 Apr. PMID 20514991. BMP-6 promotes E-cadherin expression through repressing deltaEF1 in breast cancer cells. Yang S, et al. BMC Cancer, 2007 Nov 13. PMID 17997862. Large-scale mapping of human protein-protein interactions by mass spectrometry. Ewing RM, et al. Mol Syst Biol, 2007. PMID 17353931. Global, in vivo, and site-specific phosphorylation dynamics in signaling networks. Olsen JV, et al. Cell, 2006 Nov 3. PMID 17081983. Medulloblastoma outcome is adversely associated with overexpression of EEF1D, RPL30, and RPS20 on the long arm of chromosome 8. De Bortoli M, et al. BMC Cancer, 2006 Sep 12. PMID 16968546.