

EFHD1 Antibody (monoclonal) (M05)

Mouse monoclonal antibody raised against a full length recombinant EFHD1.

Catalog # AT1858a

Specification

EFHD1 Antibody (monoclonal) (M05) - Product Information

Application	IF, WB, IHC
Primary Accession	O9BUP0
Other Accession	NM_025202
Reactivity	Human, Mouse, Rat
Host	mouse
Clonality	Monoclonal
Isotype	IgG2a Kappa
Calculated MW	26928

EFHD1 Antibody (monoclonal) (M05) - Additional Information

Gene ID 80303

Other Names

EF-hand domain-containing protein D1, EF-hand domain-containing protein 1, Swiprosin-2, EFHD1, SWS2

Target/Specificity

EFHD1 (NP_079478.1, 168 a.a. ~ 238 a.a) full-length recombinant protein with GST tag. MW of the GST tag alone is 26 KDa.

Dilution

WB~~1:500~1000

Format

Clear, colorless solution in phosphate buffered saline, pH 7.2 .

Storage

Store at -20°C or lower. Aliquot to avoid repeated freezing and thawing.

Precautions

EFHD1 Antibody (monoclonal) (M05) is for research use only and not for use in diagnostic or therapeutic procedures.

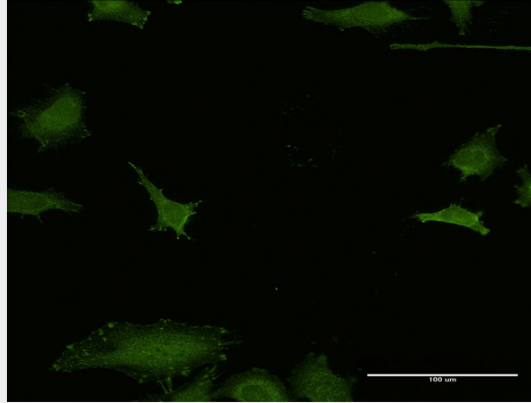
EFHD1 Antibody (monoclonal) (M05) - Protocols

Provided below are standard protocols that you may find useful for product applications.

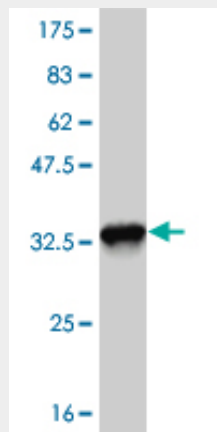
- [Western Blot](#)
- [Blocking Peptides](#)
- [Dot Blot](#)

- [Immunohistochemistry](#)
- [Immunofluorescence](#)
- [Immunoprecipitation](#)
- [Flow Cytometry](#)
- [Cell Culture](#)

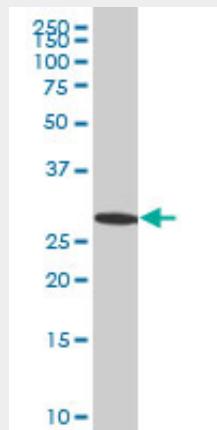
EFHD1 Antibody (monoclonal) (M05) - Images



Immunofluorescence of monoclonal antibody to EFHD1 on HeLa cell . [antibody concentration 10 ug/ml]

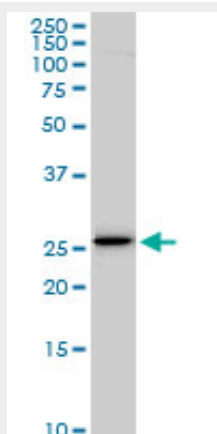


Antibody Reactive Against Recombinant Protein. Western Blot detection against Immunogen (33.44 KDa) .

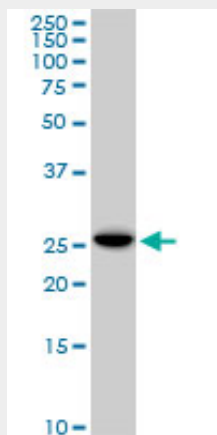


EFHD1 monoclonal antibody (M05), clone 1H7 Western Blot analysis of EFHD1 expression in HeLa

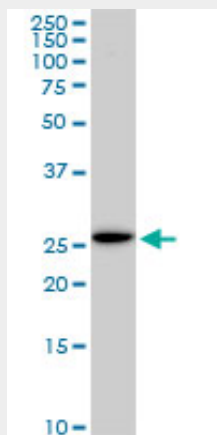
((Cat # AT1858a)



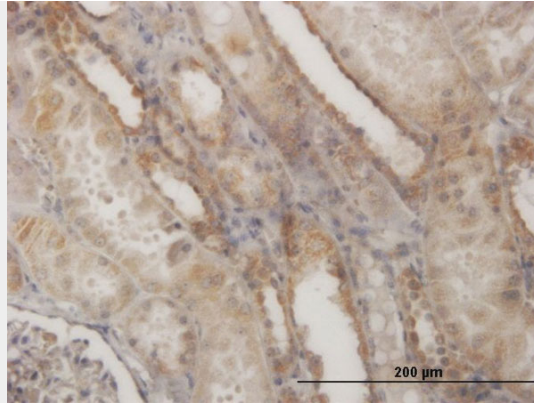
EFHD1 monoclonal antibody (M05), clone 1H7. Western Blot analysis of EFHD1 expression in PC-12((Cat # AT1858a)



EFHD1 monoclonal antibody (M05), clone 1H7. Western Blot analysis of EFHD1 expression in Raw 264.7((Cat # AT1858a)



EFHD1 monoclonal antibody (M05), clone 1H7. Western Blot analysis of EFHD1 expression in NIH/3T3((Cat # AT1858a)



Immunoperoxidase of monoclonal antibody to EFHD1 on formalin-fixed paraffin-embedded human kidney. [antibody concentration 3 ug/ml]

EFHD1 Antibody (monoclonal) (M05) - Background

EFHD1 is an EF-hand domain-containing protein that displays increased expression during neuronal differentiation (Tominaga and Tomooka, 2002 [PubMed 12270117]).

EFHD1 Antibody (monoclonal) (M05) - References

Large-scale mapping of human protein-protein interactions by mass spectrometry. Ewing RM, et al. Mol Syst Biol, 2007. PMID 17353931. Large-scale cDNA transfection screening for genes related to cancer development and progression. Wan D, et al. Proc Natl Acad Sci U S A, 2004 Nov 2. PMID 15498874. The status, quality, and expansion of the NIH full-length cDNA project: the Mammalian Gene Collection (MGC). Gerhard DS, et al. Genome Res, 2004 Oct. PMID 15489334. Complete sequencing and characterization of 21,243 full-length human cDNAs. Ota T, et al. Nat Genet, 2004 Jan. PMID 14702039. Generation and initial analysis of more than 15,000 full-length human and mouse cDNA sequences. Strausberg RL, et al. Proc Natl Acad Sci U S A, 2002 Dec 24. PMID 12477932.