

EGR1 Antibody (monoclonal) (M03)**Mouse monoclonal antibody raised against a partial recombinant EGR1.****Catalog # AT1864a****Specification**

EGR1 Antibody (monoclonal) (M03) - Product Information

Application	WB, IHC, IF, E
Primary Accession	P18146
Other Accession	NM_001964
Reactivity	Human
Host	Mouse
Clonality	Monoclonal
Isotype	IgG2a Kappa
Calculated MW	57507

EGR1 Antibody (monoclonal) (M03) - Additional Information**Gene ID** 1958**Other Names**

Early growth response protein 1, EGR-1, AT225, Nerve growth factor-induced protein A, NGFI-A, Transcription factor ETR103, Transcription factor Zif268, Zinc finger protein 225, Zinc finger protein Krox-24, EGR1, KROX24, ZNF225

Target/Specificity

EGR1 (NP_001955, 444 a.a. ~ 543 a.a) partial recombinant protein with GST tag. MW of the GST tag alone is 26 KDa.

Dilution

WB~~1:500~1000

IHC~~1:100~500

IF~~1:50~200

E~~N/A

Format

Clear, colorless solution in phosphate buffered saline, pH 7.2 .

Storage

Store at -20°C or lower. Aliquot to avoid repeated freezing and thawing.

Precautions

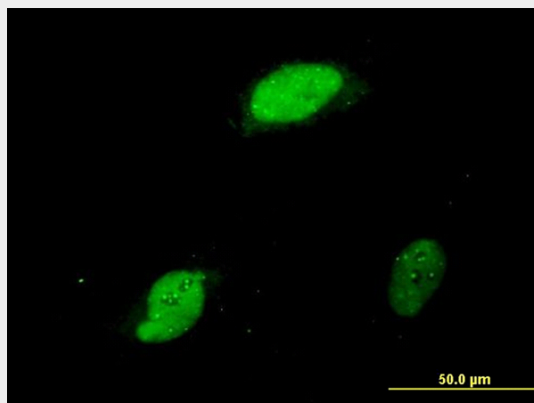
EGR1 Antibody (monoclonal) (M03) is for research use only and not for use in diagnostic or therapeutic procedures.

EGR1 Antibody (monoclonal) (M03) - Protocols

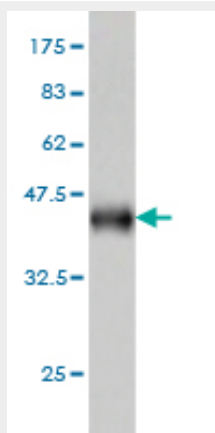
Provided below are standard protocols that you may find useful for product applications.

- [Western Blot](#)
- [Blocking Peptides](#)
- [Dot Blot](#)
- [Immunohistochemistry](#)
- [Immunofluorescence](#)
- [Immunoprecipitation](#)
- [Flow Cytometry](#)
- [Cell Culture](#)

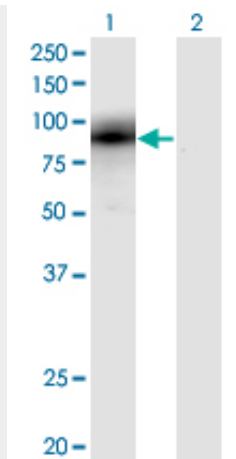
EGR1 Antibody (monoclonal) (M03) - Images



Immunofluorescence of monoclonal antibody to EGR1 on HeLa cell. [antibody concentration 10 ug/ml]



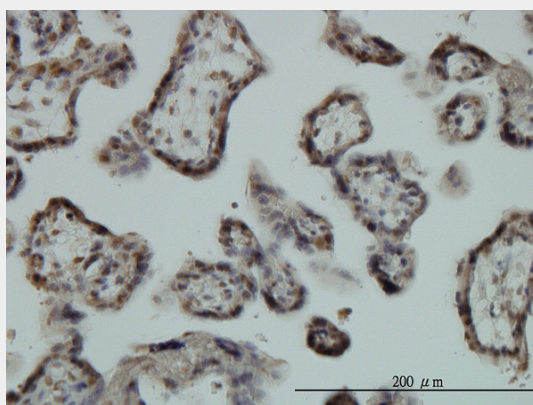
Antibody Reactive Against Recombinant Protein. Western Blot detection against Immunogen (36.74 KDa) .



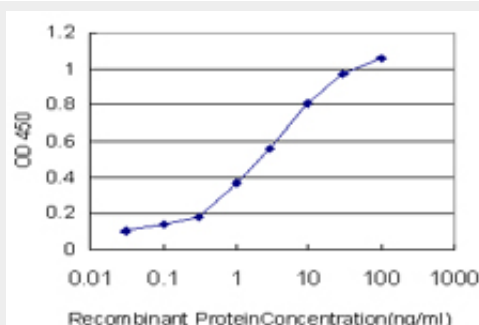
Western Blot analysis of EGR1 expression in transfected 293T cell line by EGR1 monoclonal antibody (M03), clone 6E8.

Lane 1: EGR1 transfected lysate(59.73 KDa).

Lane 2: Non-transfected lysate.



Immunoperoxidase of monoclonal antibody to EGR1 on formalin-fixed paraffin-embedded human placenta. [antibody concentration 3 ug/ml]



Detection limit for recombinant GST tagged EGR1 is approximately 0.1ng/ml as a capture antibody.

EGR1 Antibody (monoclonal) (M03) - Background

The protein encoded by this gene belongs to the EGR family of C2H2-type zinc-finger proteins. It is a nuclear protein and functions as a transcriptional regulator. The products of target genes it activates are required for differentiation and mitogenesis. Studies suggest this is a cancer suppressor gene.

EGR1 Antibody (monoclonal) (M03) - References

1. Induction of hypertrophy in vitro by mechanical loading in adult rabbit myocardium. Bupha-Intr T, Holmes JW, Janssen PM. Am J Physiol Heart Circ Physiol. 2007 Dec;293(6):H3759-67. Epub 2007 Oct 12.