

**ELA3A Antibody (monoclonal) (M02)****Mouse monoclonal antibody raised against a full length recombinant ELA3A.****Catalog # AT1889a****Specification**

---

**ELA3A Antibody (monoclonal) (M02) - Product Information**

Application	WB, IHC, E
Primary Accession	<a href="#">P09093</a>
Other Accession	<a href="#">BC007028</a>
Reactivity	Human
Host	mouse
Clonality	Monoclonal
Isotype	IgG2a Kappa
Calculated MW	29489

**ELA3A Antibody (monoclonal) (M02) - Additional Information****Gene ID** 10136**Other Names**

Chymotrypsin-like elastase family member 3A, Elastase IIIA, Elastase-3A, Protease E, CELA3A, ELA3, ELA3A

**Target/Specificity**

ELA3A (AAH07028, 16 a.a. ~ 270 a.a) full-length recombinant protein with GST tag. MW of the GST tag alone is 26 KDa.

**Dilution**

WB~~1:500~1000

IHC~~1:100~500

E~~N/A

**Format**

Clear, colorless solution in phosphate buffered saline, pH 7.2 .

**Storage**

Store at -20°C or lower. Aliquot to avoid repeated freezing and thawing.

**Precautions**

ELA3A Antibody (monoclonal) (M02) is for research use only and not for use in diagnostic or therapeutic procedures.

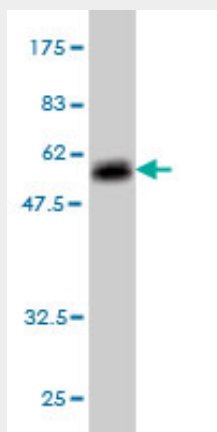
**ELA3A Antibody (monoclonal) (M02) - Protocols**

Provided below are standard protocols that you may find useful for product applications.

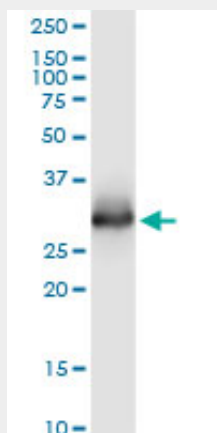
- [Western Blot](#)

- [Blocking Peptides](#)
- [Dot Blot](#)
- [Immunohistochemistry](#)
- [Immunofluorescence](#)
- [Immunoprecipitation](#)
- [Flow Cytometry](#)
- [Cell Culture](#)

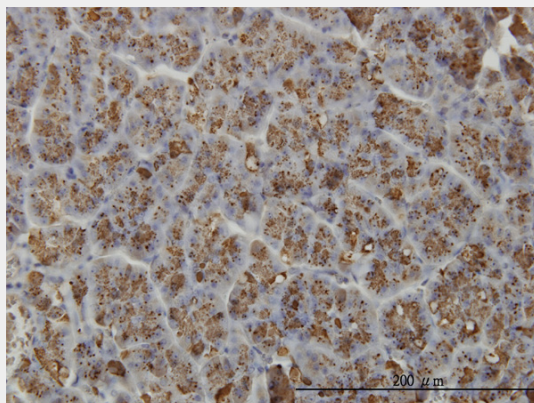
#### ELA3A Antibody (monoclonal) (M02) - Images



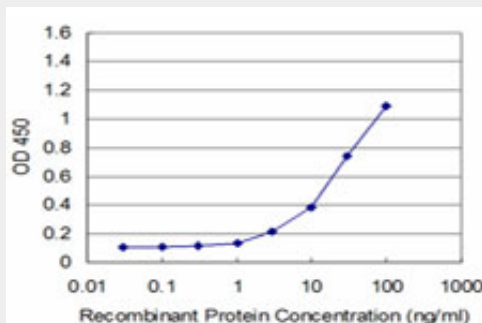
Antibody Reactive Against Recombinant Protein. Western Blot detection against Immunogen (53.79 KDa) .



ELA3A monoclonal antibody (M02), clone 3G4. Western Blot analysis of ELA3A expression in human pancreas.



Immunoperoxidase of monoclonal antibody to ELA3A on formalin-fixed paraffin-embedded human pancreas. [antibody concentration 3 ug/ml]



Detection limit for recombinant GST tagged ELA3A is approximately 1ng/ml as a capture antibody.

### **ELA3A Antibody (monoclonal) (M02) - Background**

Elastases form a subfamily of serine proteases that hydrolyze many proteins in addition to elastin. Humans have six elastase genes which encode the structurally similar proteins elastase 1, 2, 2A, 2B, 3A, and 3B. Unlike other elastases, elastase 3A has little elastolytic activity. Like most of the human elastases, elastase 3A is secreted from the pancreas as a zymogen and, like other serine proteases such as trypsin, chymotrypsin and kallikrein, it has a digestive function in the intestine. Elastase 3A preferentially cleaves proteins after alanine residues. Elastase 3A may also function in the intestinal transport and metabolism of cholesterol. Both elastase 3A and elastase 3B have been referred to as protease E and as elastase 1.

### **ELA3A Antibody (monoclonal) (M02) - References**

The status, quality, and expansion of the NIH full-length cDNA project: the Mammalian Gene Collection (MGC). Gerhard DS, et al. Genome Res, 2004 Oct. PMID 15489334. Generation and initial analysis of more than 15,000 full-length human and mouse cDNA sequences. Strausberg RL, et al. Proc Natl Acad Sci U S A, 2002 Dec 24. PMID 12477932. Pancreatic elastase IIIA and its variants are expressed in pancreatic carcinoma cells. Shimada S, et al. Int J Mol Med, 2002 Nov. PMID 12373299. Construction and characterization of a full length-enriched and a 5'-end-enriched cDNA library. Suzuki Y, et al. Gene, 1997 Oct 24. PMID 9373149. Oligo-capping: a simple method to replace the cap structure of eukaryotic mRNAs with oligoribonucleotides. Maruyama K, et al. Gene, 1994 Jan 28. PMID 8125298.