

**ELAVL4 Antibody (monoclonal) (M01)**

Mouse monoclonal antibody raised against a partial recombinant ELAVL4.

Catalog # AT1892a

**Specification**

---

**ELAVL4 Antibody (monoclonal) (M01) - Product Information**

Application	WB, IHC, E
Primary Accession	<a href="#">P26378</a>
Other Accession	<a href="#">NM_021952</a>
Reactivity	Human, Rat
Host	mouse
Clonality	Monoclonal
Isotype	IgG1 Kappa
Calculated MW	42398

**ELAVL4 Antibody (monoclonal) (M01) - Additional Information****Gene ID** 1996**Other Names**

ELAV-like protein 4, Hu-antigen D, HuD, Paraneoplastic encephalomyelitis antigen HuD, ELAVL4, HUD, PNEM

**Target/Specificity**

ELAVL4 (NP\_068771, 312 a.a. ~ 380 a.a) partial recombinant protein with GST tag. MW of the GST tag alone is 26 KDa.

**Dilution**

WB~~1:500~1000

IHC~~1:100~500

E~~N/A

**Format**

Clear, colorless solution in phosphate buffered saline, pH 7.2 .

**Storage**

Store at -20°C or lower. Aliquot to avoid repeated freezing and thawing.

**Precautions**

ELAVL4 Antibody (monoclonal) (M01) is for research use only and not for use in diagnostic or therapeutic procedures.

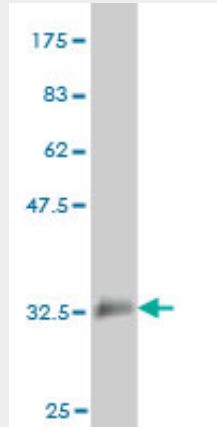
**ELAVL4 Antibody (monoclonal) (M01) - Protocols**

Provided below are standard protocols that you may find useful for product applications.

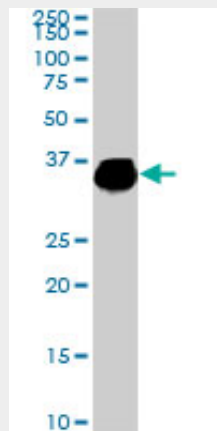
- [Western Blot](#)

- [Blocking Peptides](#)
- [Dot Blot](#)
- [Immunohistochemistry](#)
- [Immunofluorescence](#)
- [Immunoprecipitation](#)
- [Flow Cytometry](#)
- [Cell Culture](#)

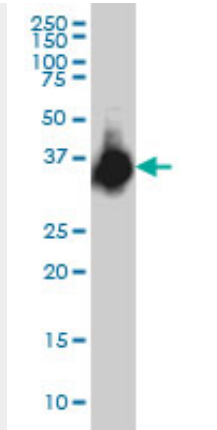
### ELAVL4 Antibody (monoclonal) (M01) - Images



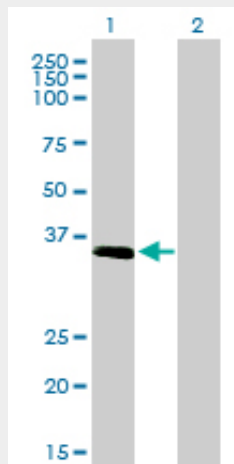
Antibody Reactive Against Recombinant Protein. Western Blot detection against Immunogen (33.33 KDa) .



ELAVL4 monoclonal antibody (M01), clone 6B9. Western Blot analysis of ELAVL4 expression in PC-12 ( (Cat # AT1892a )



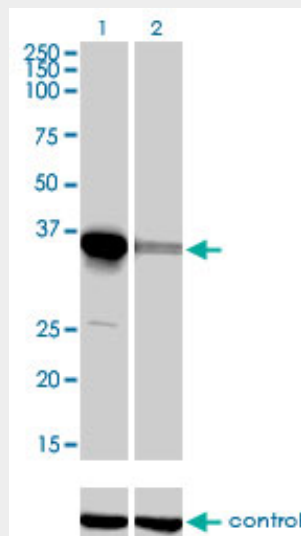
ELAVL4 monoclonal antibody (M01), clone 6B9 Western Blot analysis of ELAVL4 expression in IMR-32 ( (Cat # AT1892a )



Western Blot analysis of ELAVL4 expression in transfected 293T cell line by ELAVL4 monoclonal antibody (M01), clone 6B9.

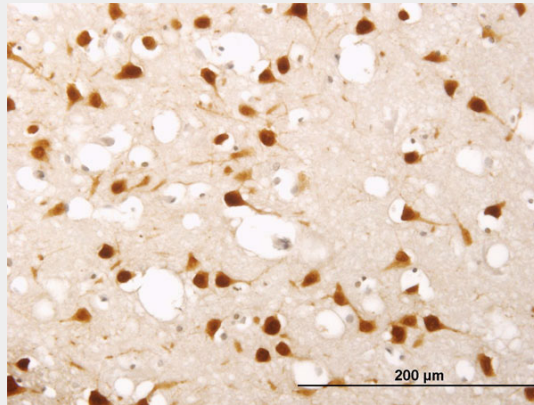
Lane 1: ELAVL4 transfected lysate(40.4 KDa).

Lane 2: Non-transfected lysate.

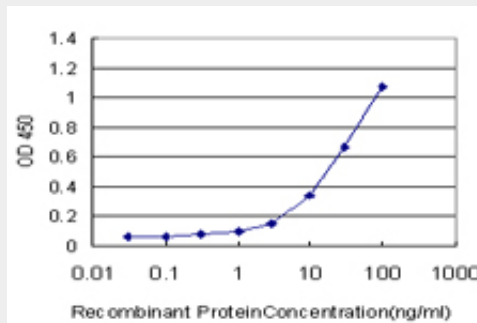


Western blot analysis of ELAVL4 over-expressed 293 cell line, cotransfected with ELAVL4

Validated Chimera RNAi ( (Cat # AT1892a )



Immunoperoxidase of monoclonal antibody to ELAVL4 on formalin-fixed paraffin-embedded human cerebral cortex. [antibody concentration 1.2 ug/ml]



Detection limit for recombinant GST tagged ELAVL4 is approximately 1ng/ml as a capture antibody.

**ELAVL4 Antibody (monoclonal) (M01) - References**

Molecular analysis of the HuD gene in neuroendocrine lung cancers. D'Alessandro V, et al. Lung Cancer, 2010 Jan. PMID 19410329.No evidence for the presence of HuD-specific T cells in the cerebrospinal fluid of patients with Hu-associated paraneoplastic neurological syndromes. de Beukelaar JW, et al. J Neurol, 2009 Feb. PMID 19252764.Molecular detection of neuron-specific ELAV-like-positive cells in the peripheral blood of patients with small-cell lung cancer. D'Alessandro V, et al. Cell Oncol, 2008. PMID 18607064.Replication of association between ELAVL4 and Parkinson disease: the GenePD study. DeStefano AL, et al. Hum Genet, 2008 Aug. PMID 18587682.Alterations in mossy fiber physiology and GAP-43 expression and function in transgenic mice overexpressing HuD. Tanner DC, et al. Hippocampus, 2008. PMID 18493953.