

**ELK3 Antibody (monoclonal) (M02)****Mouse monoclonal antibody raised against a partial recombinant ELK3.****Catalog # AT1897a****Specification**

---

**ELK3 Antibody (monoclonal) (M02) - Product Information**

Application	WB, E
Primary Accession	<a href="#">P41970</a>
Other Accession	<a href="#">NM_005230</a>
Reactivity	Human
Host	mouse
Clonality	Monoclonal
Isotype	IgG2a Kappa
Calculated MW	44240

**ELK3 Antibody (monoclonal) (M02) - Additional Information****Gene ID** 2004**Other Names**

ETS domain-containing protein Elk-3, ETS-related protein ERP, ETS-related protein NET, Serum response factor accessory protein 2, SAP-2, SRF accessory protein 2, ELK3, NET, SAP2

**Target/Specificity**

ELK3 (NP\_005221.2, 101 a.a. ~ 200 a.a) partial recombinant protein with GST tag. MW of the GST tag alone is 26 KDa.

**Dilution**

WB~~1:500~1000

E~~N/A

**Format**

Clear, colorless solution in phosphate buffered saline, pH 7.2 .

**Storage**

Store at -20°C or lower. Aliquot to avoid repeated freezing and thawing.

**Precautions**

ELK3 Antibody (monoclonal) (M02) is for research use only and not for use in diagnostic or therapeutic procedures.

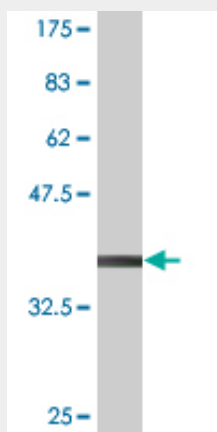
**ELK3 Antibody (monoclonal) (M02) - Protocols**

Provided below are standard protocols that you may find useful for product applications.

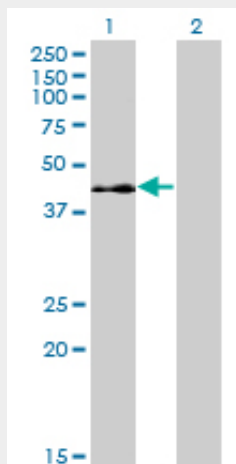
- [Western Blot](#)
- [Blocking Peptides](#)

- [Dot Blot](#)
- [Immunohistochemistry](#)
- [Immunofluorescence](#)
- [Immunoprecipitation](#)
- [Flow Cytometry](#)
- [Cell Culture](#)

### ELK3 Antibody (monoclonal) (M02) - Images

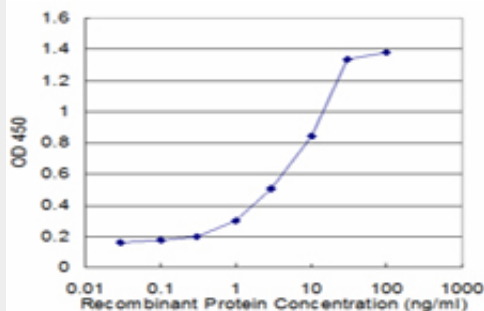


Antibody Reactive Against Recombinant Protein. Western Blot detection against Immunogen (36.74 kDa) .



Western Blot analysis of ELK3 expression in transfected 293T cell line by ELK3 monoclonal antibody (M02), clone 3A12.

Lane 1: ELK3 transfected lysate (44.2 kDa).  
Lane 2: Non-transfected lysate.



Detection limit for recombinant GST tagged ELK3 is approximately 0.3ng/ml as a capture antibody.

### **ELK3 Antibody (monoclonal) (M02) - Background**

The protein encoded by this gene is a member of the ETS-domain transcription factor family and the ternary complex factor (TCF) subfamily. Proteins in this subfamily regulate transcription when recruited by serum response factor to bind to serum response elements. This protein is activated by signal-induced phosphorylation; studies in rodents suggest that it is a transcriptional inhibitor in the absence of Ras, but activates transcription when Ras is present.

### **ELK3 Antibody (monoclonal) (M02) - References**

Involvement of net and Hif1alpha in distinct yet intricately linked hypoxia-induced signaling pathways. Serchov T, et al. J Biol Chem, 2010 Jul 9. PMID 20427288. Personalized smoking cessation: interactions between nicotine dose, dependence and quit-success genotype score. Rose JE, et al. Mol Med, 2010 Jul-Aug. PMID 20379614. Growth inhibitory effect of the ternary complex factor Net on human pancreatic carcinoma cell lines. Li B, et al. Tohoku J Exp Med, 2008 Oct. PMID 18832796. Inhibition of the Ras-Net (Elk-3) pathway by a novel pyrazole that affects microtubules. Wasylyk C, et al. Cancer Res, 2008 Mar 1. PMID 18316589. Toward a confocal subcellular atlas of the human proteome. Barbe L, et al. Mol Cell Proteomics, 2008 Mar. PMID 18029348.