

ENTH Antibody (monoclonal) (M03)**Mouse monoclonal antibody raised against a partial recombinant ENTH.****Catalog # AT1915a****Specification**

ENTH Antibody (monoclonal) (M03) - Product Information

Application	WB, IHC, IF, E
Primary Accession	Q14677
Other Accession	NM_014666
Reactivity	Human, Mouse, Rat
Host	mouse
Clonality	Monoclonal
Isotype	IgG1 Kappa
Calculated MW	68259

ENTH Antibody (monoclonal) (M03) - Additional Information**Gene ID** 9685**Other Names**

Clathrin interactor 1, Clathrin-interacting protein localized in the trans-Golgi region, Clint, Enthoprotin, Epsin-4, Epsin-related protein, EpsinR, CLINT1, ENTH, EPN4, EPNR, KIAA0171

Target/Specificity

ENTH (NP_055481.1, 161 a.a. ~ 261 a.a) partial recombinant protein with GST tag. MW of the GST tag alone is 26 KDa.

Dilution

WB~~1:500~1000

IHC~~1:100~500

IF~~1:50~200

E~~N/A

Format

Clear, colorless solution in phosphate buffered saline, pH 7.2 .

Storage

Store at -20°C or lower. Aliquot to avoid repeated freezing and thawing.

Precautions

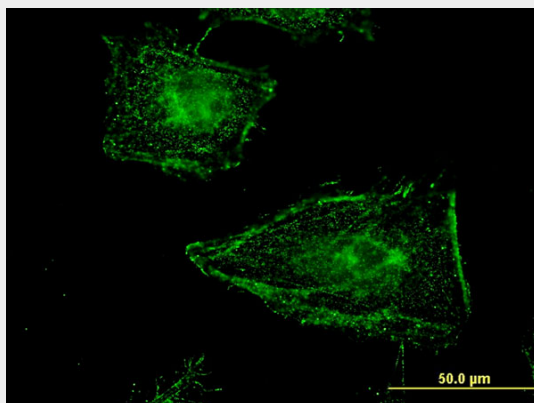
ENTH Antibody (monoclonal) (M03) is for research use only and not for use in diagnostic or therapeutic procedures.

ENTH Antibody (monoclonal) (M03) - Protocols

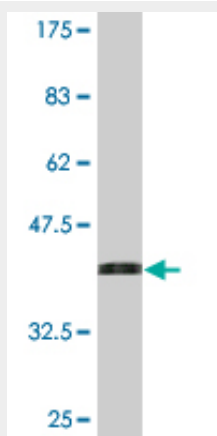
Provided below are standard protocols that you may find useful for product applications.

- [Western Blot](#)
- [Blocking Peptides](#)
- [Dot Blot](#)
- [Immunohistochemistry](#)
- [Immunofluorescence](#)
- [Immunoprecipitation](#)
- [Flow Cytometry](#)
- [Cell Culture](#)

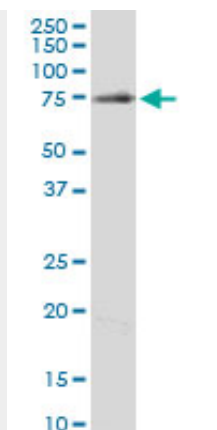
ENTH Antibody (monoclonal) (M03) - Images



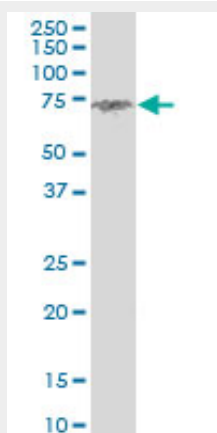
Immunofluorescence of monoclonal antibody to CLINT1 on HeLa cell . [antibody concentration 10 ug/ml]



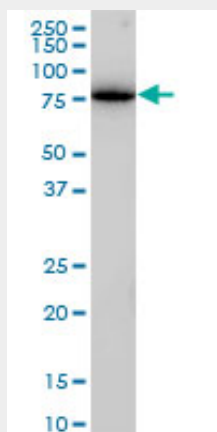
Antibody Reactive Against Recombinant Protein. Western Blot detection against Immunogen (36.85 KDa) .



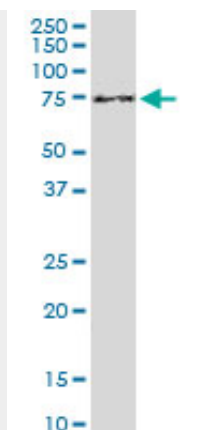
ENTH monoclonal antibody (M03), clone 1E6. Western Blot analysis of ENTH expression in PC-12((Cat # AT1915a)



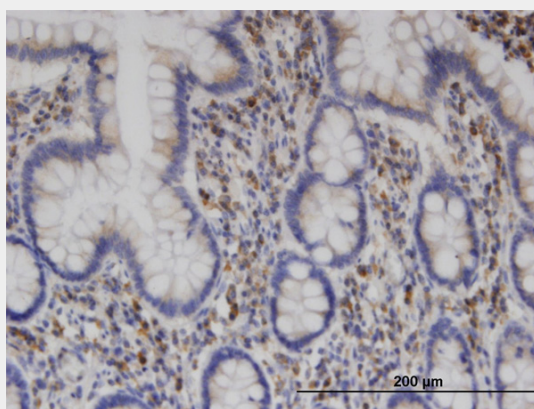
ENTH monoclonal antibody (M03), clone 1E6. Western Blot analysis of ENTH expression in Raw 264.7((Cat # AT1915a)



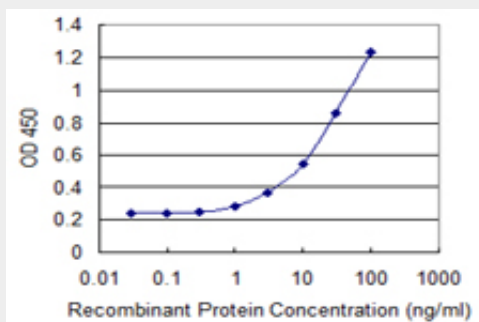
ENTH monoclonal antibody (M03), clone 1E6. Western Blot analysis of ENTH expression in Jurkat ((Cat # AT1915a)



ENTH monoclonal antibody (M03), clone 1E6. Western Blot analysis of ENTH expression in NIH/3T3((Cat # AT1915a)



Immunoperoxidase of monoclonal antibody to CLINT1 on formalin-fixed paraffin-embedded human small Intestine. [antibody concentration 3 ug/ml]



Detection limit for recombinant GST tagged CLINT1 is 0.3 ng/ml as a capture antibody.

ENTH Antibody (monoclonal) (M03) - Background

This gene encodes a protein with similarity to the epsin family of endocytic adapter proteins. The encoded protein interacts with clathrin, the adapter protein AP-1 and phosphoinositides. This protein may be involved in the formation of clathrin coated vesicles and trafficking between the trans-Golgi network and endosomes. Mutations in this gene are associated with a susceptibility to schizophrenia and psychotic disorders. Alternate splicing results in multiple transcript variants.

ENTH Antibody (monoclonal) (M03) - References

Comprehensive copy number variant (CNV) analysis of neuronal pathways genes in psychiatric disorders identifies rare variants within patients. Saus E, et al. J Psychiatr Res, 2010 Apr 14. PMID

20398908. Personalized smoking cessation: interactions between nicotine dose, dependence and quit-success genotype score. Rose JE, et al. Mol Med, 2010 Jul-Aug. PMID 20379614. Defining the human deubiquitinating enzyme interaction landscape. Sowa ME, et al. Cell, 2009 Jul 23. PMID 19615732. The epsin 4 gene is associated with psychotic disorders in families of Latin American origin. Escamilla M, et al. Schizophr Res, 2008 Dec. PMID 18929466. Failure to confirm an association between Epsin 4 and schizophrenia in a Japanese population. Richards M, et al. J Neural Transm, 2008 Sep. PMID 18696005.