

EPO monoclonal antibody (M01), clone 4G7
Purified Mouse Monoclonal Antibody (Mab)
Catalog # AT1930a**Specification**

EPO monoclonal antibody (M01), clone 4G7 - Product Information

Application	WB, E
Primary Accession	P01588
Other Accession	NP_000790
Reactivity	Human
Host	Mouse
Clonality	Monoclonal
Isotype	IgG2a Kappa
Calculated MW	21307

EPO monoclonal antibody (M01), clone 4G7 - Additional Information**Gene ID** 2056**Other Names**

Erythropoietin, Epoetin, EPO

Target/Specificity

EPO (NP_000790.1, 28 a.a. ~ 193 a.a) full-length recombinant protein with GST tag.

Dilution

WB~~1:1000

E~~N/A

Format

Clear, colorless solution in phosphate buffered saline, pH 7.2 .

Storage

Store at -20°C or lower. Aliquot to avoid repeated freezing and thawing.

Precautions

EPO monoclonal antibody (M01), clone 4G7 is for research use only and not for use in diagnostic or therapeutic procedures.

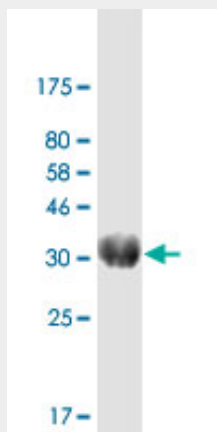
EPO monoclonal antibody (M01), clone 4G7 - Protocols

Provided below are standard protocols that you may find useful for product applications.

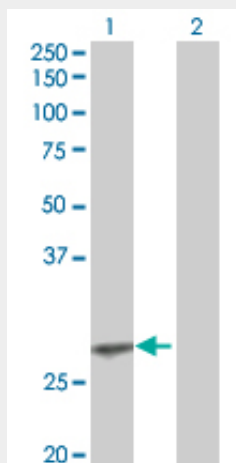
- [Western Blot](#)
- [Blocking Peptides](#)
- [Dot Blot](#)
- [Immunohistochemistry](#)

- [Immunofluorescence](#)
- [Immunoprecipitation](#)
- [Flow Cytometry](#)
- [Cell Culture](#)

EPO monoclonal antibody (M01), clone 4G7 - Images



Western Blot detection against Immunogen (21 KDa) .



Western Blot analysis of EPO expression in transfected 293T cell line by EPO monoclonal antibody (M01), clone 4G7. Lane 1: EPO transfected lysate(21.3 KDa). Lane 2: Non-transfected lysate.

EPO monoclonal antibody (M01), clone 4G7 - Background

This gene is a member of the EPO/TPO family and encodes a secreted, glycosylated cytokine composed of four alpha helical bundles. The protein is found in the plasma and regulates red cell production by promoting erythroid differentiation and initiating hemoglobin synthesis. This protein also has neuroprotective activity against a variety of potential brain injuries and antiapoptotic functions in several tissue types.

EPO monoclonal antibody (M01), clone 4G7 - References

Variation at the NFATC2 Locus Increases the Risk of Thiazolidinedione-Induced Edema in the Diabetes REduction Assessment with ramipril and rosiglitazone Medication (DREAM) Study. Bailey SD, et al. Diabetes Care, 2010 Jul 13. PMID 20628086. Erythropoietin and vascular endothelial growth factor as risk markers for severe hypoglycaemia in type 1 diabetes. Kristensen PL, et al. Eur J Endocrinol, 2010 Sep. PMID 20566589. Erythropoietin activates mitochondrial biogenesis and

couples red cell mass to mitochondrial mass in the heart. Carraway MS, et al. Circ Res, 2010 Jun 11. PMID 20395592. Erythropoietin-induced activation of the JAK2/STAT5, PI3K/Akt, and Ras/ERK pathways promotes malignant cell behavior in a modified breast cancer cell line. Shi Z, et al. Mol Cancer Res, 2010 Apr. PMID 20353997. New genetic associations detected in a host response study to hepatitis B vaccine. Davila S, et al. Genes Immun, 2010 Apr. PMID 20237496.