

ERCC2 Antibody (monoclonal) (M01)**Mouse monoclonal antibody raised against a full length recombinant ERCC2.****Catalog # AT1937a****Specification**

ERCC2 Antibody (monoclonal) (M01) - Product Information

Application	WB
Primary Accession	P18074
Other Accession	BC008346
Reactivity	Human
Host	mouse
Clonality	Monoclonal
Isotype	IgG1 kappa
Calculated MW	86909

ERCC2 Antibody (monoclonal) (M01) - Additional Information**Gene ID** 2068**Other Names**

TFIIH basal transcription factor complex helicase XPD subunit, Basic transcription factor 2 80 kDa subunit, BTF2 p80, CXPB, DNA excision repair protein ERCC-2, DNA repair protein complementing XP-D cells, TFIIH basal transcription factor complex 80 kDa subunit, TFIIH 80 kDa subunit, TFIIH p80, Xeroderma pigmentosum group D-complementing protein, ERCC2, XPD, XPDC

Target/Specificity

ERCC2 (AAH08346, 1 a.a. ~ 405 a.a) full-length recombinant protein with GST tag. MW of the GST tag alone is 26 KDa.

Dilution

WB~~1:500~1000

Format

Clear, colorless solution in phosphate buffered saline, pH 7.2 .

Storage

Store at -20°C or lower. Aliquot to avoid repeated freezing and thawing.

Precautions

ERCC2 Antibody (monoclonal) (M01) is for research use only and not for use in diagnostic or therapeutic procedures.

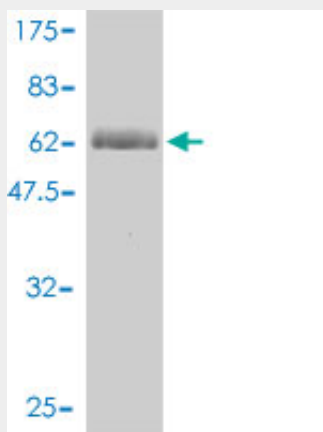
ERCC2 Antibody (monoclonal) (M01) - Protocols

Provided below are standard protocols that you may find useful for product applications.

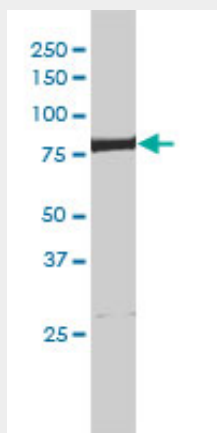
- [Western Blot](#)

- [Blocking Peptides](#)
- [Dot Blot](#)
- [Immunohistochemistry](#)
- [Immunofluorescence](#)
- [Immunoprecipitation](#)
- [Flow Cytometry](#)
- [Cell Culture](#)

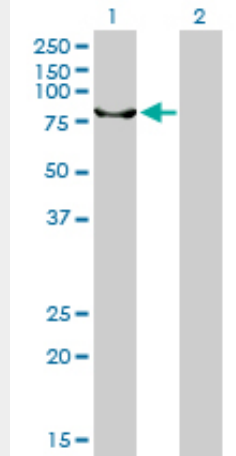
ERCC2 Antibody (monoclonal) (M01) - Images



Antibody Reactive Against Recombinant Protein. Western Blot detection against Immunogen (70.29 KDa) .



ERCC2 monoclonal antibody (M01), clone 4G2-2A6 Western Blot analysis of ERCC2 expression in Hela S3 NE ((Cat # AT1937a)



Western Blot analysis of ERCC2 expression in transfected 293T cell line by ERCC2 monoclonal antibody (M01), clone 4G2-2A6.

Lane 1: ERCC2 transfected lysate(86.9 KDa).

Lane 2: Non-transfected lysate.

ERCC2 Antibody (monoclonal) (M01) - Background

The nucleotide excision repair pathway is a mechanism to repair damage to DNA. The protein encoded by this gene is involved in transcription-coupled nucleotide excision repair and is an integral member of the basal transcription factor BTF2/TFIIH complex. The gene product has ATP-dependent DNA helicase activity and belongs to the RAD3/XPD subfamily of helicases. Defects in this gene can result in three different disorders, the cancer-prone syndrome xeroderma pigmentosum complementation group D, trichothiodystrophy, and Cockayne syndrome. Alternatively spliced transcript variants encoding different isoforms have been found for this gene. [provided by RefSeq]