

**ESM1 Antibody (monoclonal) (M02)****Mouse monoclonal antibody raised against a partial recombinant ESM1.****Catalog # AT1949a****Specification**

---

**ESM1 Antibody (monoclonal) (M02) - Product Information**

Application	WB, IHC, E
Primary Accession	<a href="#">O9NQ30</a>
Other Accession	<a href="#">NM_007036</a>
Reactivity	Human
Host	mouse
Clonality	Monoclonal
Isotype	IgG2b Kappa
Calculated MW	20095

**ESM1 Antibody (monoclonal) (M02) - Additional Information****Gene ID** 11082**Other Names**

Endothelial cell-specific molecule 1, ESM-1, ESM1

**Target/Specificity**

ESM1 (NP\_008967, 85 a.a. ~ 184 a.a) partial recombinant protein with GST tag. MW of the GST tag alone is 26 KDa.

**Dilution**

WB~~1:500~1000

IHC~~1:100~500

E~~N/A

**Format**

Clear, colorless solution in phosphate buffered saline, pH 7.2 .

**Storage**

Store at -20°C or lower. Aliquot to avoid repeated freezing and thawing.

**Precautions**

ESM1 Antibody (monoclonal) (M02) is for research use only and not for use in diagnostic or therapeutic procedures.

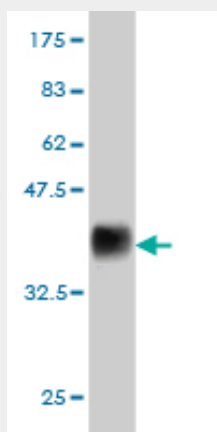
**ESM1 Antibody (monoclonal) (M02) - Protocols**

Provided below are standard protocols that you may find useful for product applications.

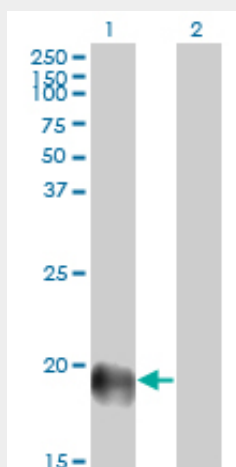
- [Western Blot](#)
- [Blocking Peptides](#)

- [Dot Blot](#)
- [Immunohistochemistry](#)
- [Immunofluorescence](#)
- [Immunoprecipitation](#)
- [Flow Cytometry](#)
- [Cell Culture](#)

### ESM1 Antibody (monoclonal) (M02) - Images



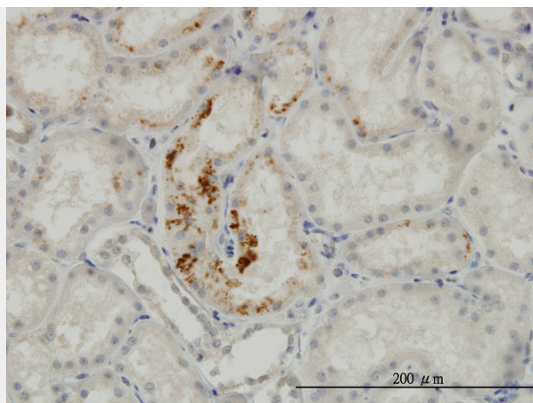
Antibody Reactive Against Recombinant Protein. Western Blot detection against Immunogen (36.74 kDa) .



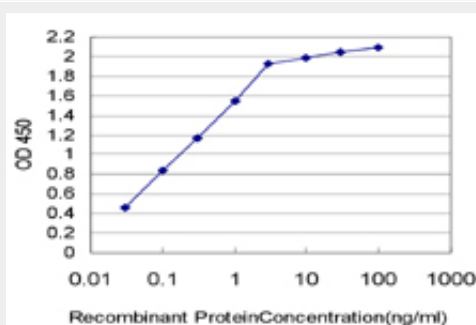
Western Blot analysis of ESM1 expression in transfected 293T cell line by ESM1 monoclonal antibody (M02), clone 6D4.

Lane 1: ESM1 transfected lysate (20.1 kDa).

Lane 2: Non-transfected lysate.



Immunoperoxidase of monoclonal antibody to ESM1 on formalin-fixed paraffin-embedded human kidney. [antibody concentration 3 ug/ml]



Detection limit for recombinant GST tagged ESM1 is approximately 0.03ng/ml as a capture antibody.

### ESM1 Antibody (monoclonal) (M02) - Background

This gene encodes a secreted protein which is mainly expressed in the endothelial cells in human lung and kidney tissues. The expression of this gene is regulated by cytokines, suggesting that it may play a role in endothelium-dependent pathological disorders. The transcript contains multiple polyadenylation and mRNA instability signals. Two transcript variants encoding different isoforms have been found for this gene.

### ESM1 Antibody (monoclonal) (M02) - References

- 1.ESM-1 silencing decreased cell survival, migration, and invasion and modulated cell cycle progression in hepatocellular carcinoma.Kang YH, Ji NY, Lee CI, Lee HG, Kim JW, Yeom YI, Kim DG, Yoon SK, Kim JW, Park PJ, Song EY.Amino Acids. 2010 Sep 7. [Epub ahead of print]
- 2.Identification of endothelial cell-specific molecule-1 as a potential serum marker for colorectal cancer.Ji NY, Kim YH, Jang YJ, Kang YH, Lee CI, Kim JW, Yeom YI, Chun HK, Choi YH, Kim JH, Kim JW, Lee HG, Song EY.Cancer Sci. 2010 Jul 30. [Epub ahead of print]
- 3.Overexpression of Endothelial Cell Specific Molecule-1 (ESM-1) in Gastric Cancer.Liu N, Zhang LH, Du H, Hu Y, Zhang GG, Wang XH, Li JY, Ji JF.Ann Surg Oncol. 2010 Apr 10. [Epub ahead of print]